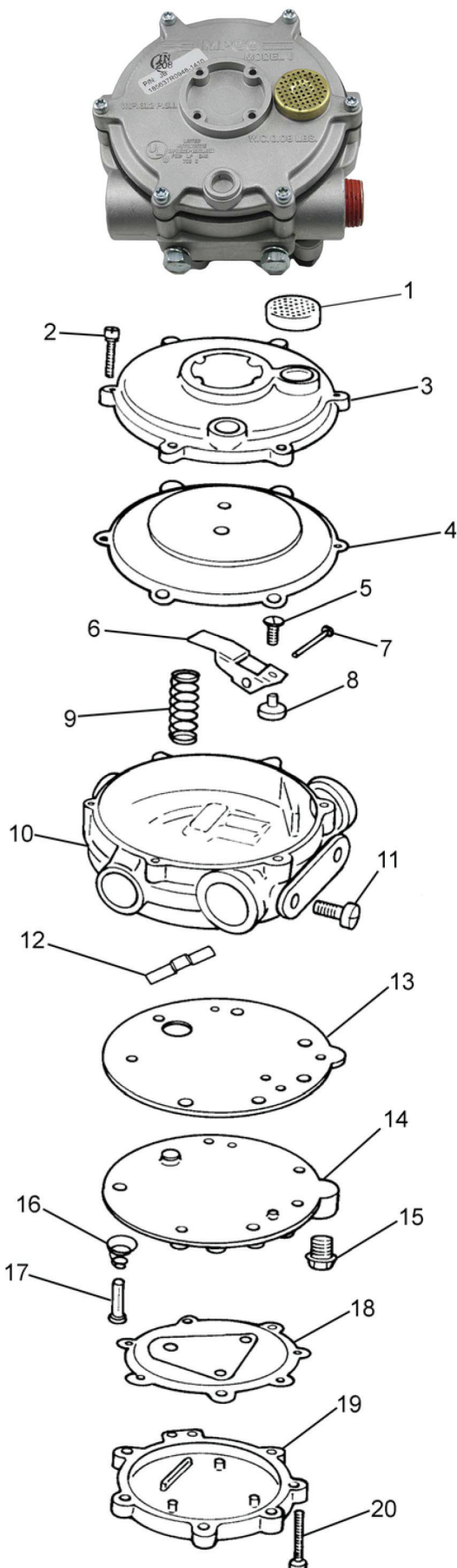


## Model J Series

100 HP LP Gas



Part #	Ref. #	Description
NSS	1	Screen, atmosphere vent (Model J only)
NSS	2	Screw, 8-32 x 5/8" SEMS (6)
NSS	3	Cover assy., secondary
NSS*	4	Diaphragm assy., secondary, Hydrin (RK-J, RK-J-C, RK-JC-734)
NSS*	4	Diaphragm assy., secondary, Silicone (RK-J-2)
NSS*	4	Diaphragm assy., secondary, Silicone (RK-J-3)
NSS	5	Screw, 8-32 x 3/8" SEMS
L1-37	6	Lever, secondary regulator
NSS	7	Pin, secondary fulcrum
S4-27*	8	Seat, secondary
S2-35	9	Spring, blue secondary, standard
S2-38**	9	Spring, orange secondary, optional
NSS	10	Body assy., with jet
S1-5	11	Screw, 1/4" - 20 x 5/8" SEMS (2)
NSS*	12	Seat, primary regulator
NSS*	13	Gasket, body to plate
P2-26	14	Plate, converter body cover
P3-13	15	Plug, 1/8" pipe, hex head
S2-36	16	Spring, primary regulator
NSS*	17	Pin, primary valve
NSS*	18	Diaphragm assy., primary
C1-93	19	Cover, primary regulator
NSS	20	Screw, 8-32 x 1" SEMS (7)

NSS = Not Serviced Separately

\* Indicates repair kit components.

\*\* Two vapor outlet pressures are available. Orange secondary spring gives negative 1/2" water column. Blue secondary spring gives negative 1 1/2" water column. To change any JB converter to JO, change blue secondary spring to orange.

## Model J Series

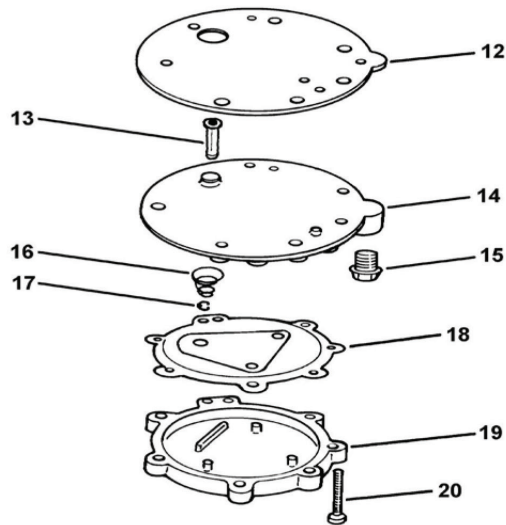
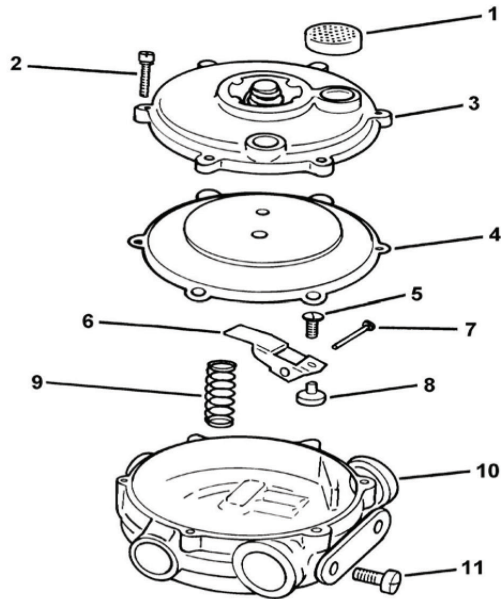
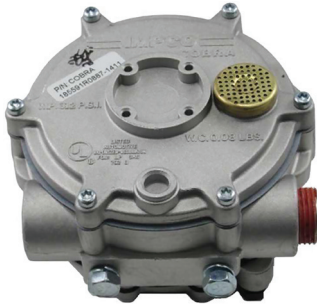
### Repair Kits



Part #	Description
RK-J	Buna
RK-J-2	Silicon

## Model Cobra Series

100 HP LP Gas



Part #	Ref. #	Description
NSS	1	Screen, atmospheric vent
NSS	2	Screw, 8-32 x 7/8" Tork style (6)
NSS	3	Cover Assy, secondary
AD1-27-5	4	Diaphragm Ass, secondary, flourosilicone
NSS	5	Screw, 8-32 x 1/2" Tork style
L1-37	6	Lever, secondary
P1-8	7	Pin, secondary fulcrum
S4-27*	8	Seat, secondary
S2-35	9	Spring, blue secondary, -0.37 kPa standard
S2-38	9	Spring, orange secondary, -0.12 kPa optional
NSS	10	Body assy, with jet
NSS	11	Plug, vapor outlet
S1-5	12	Screw, 1/4-20 x 5/8" (2)
NSS	13	Pin, valve primary
NSS	14	Plate, body cover
P3-13	15	Plug, 1/8 NPT hex head
NSS	16	Spring, primary
NSS	17	E-ring, external
NSS	18	Diaphragm assy, primary
NSS	19	Cover, primary
NSS	20	Screw, 8-32 x 1-1/8" Tork style (7)

NSS = Not Serviced Separately

\*Included in Repair Kit

## Model Cobra Series

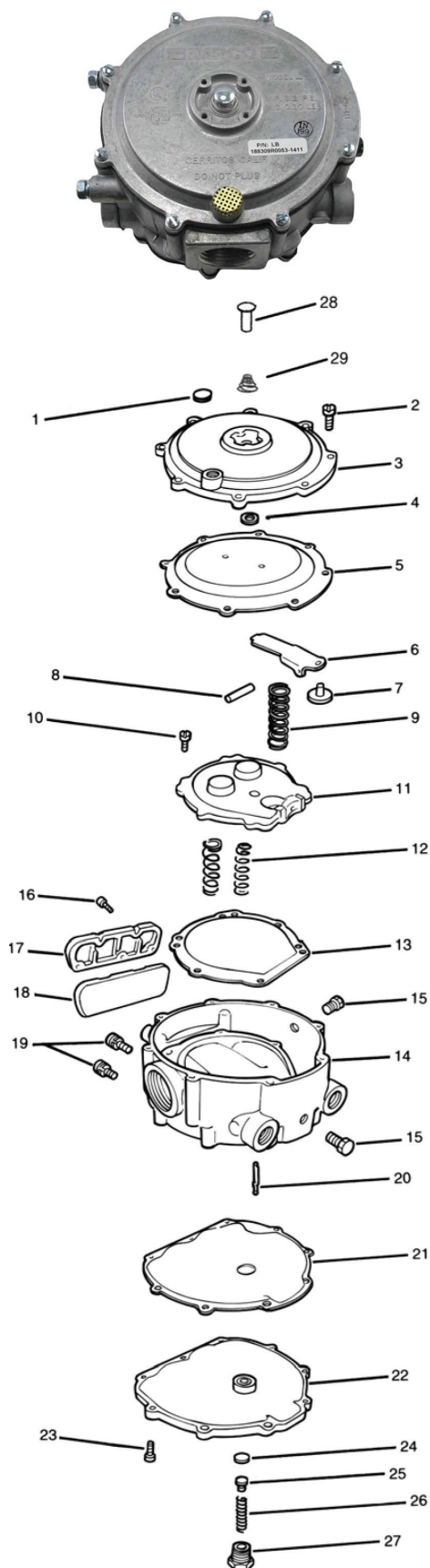
### Repair Kits



Part #	Description
RK-Cobra	Repair Kit

## Model L Series

325 HP LP Gas



Part #	Ref. #	Description
S7-1	1	Screen, atmosphere vent
S1-59*	2	Screw, 8-32 x 5/8" SEMS (8)
NSS	3	Cover assy., secondary
W1-27*	4	Washer, hand primer
NSS*	5	Diaphragm assy., secondary, Hydrin
NSS*	5	Diaphragm assy., secondary, Silicone
L1-87	6	Lever, secondary
S4-37*	7	Seat, secondary (new)
NSS	8	Pin, secondary lever fulcrum
S2-97	9	Spring, secondary regulator (blue)
S1-59*	10	Screw, 8-32 x 3/8" SEMS (6)
NSS	11	Cover, primary diaphragm
S2-92	12	Spring, primary regulator (2)
NSS*	13	Diaphragm assy., primary
NSS	14	Body assy.
P3-13	15	Plug, 1/8" pipe, hex head (2)
S1-59*	16	Screw, 8-32 x 5/8" SEMS (5)
C1-61	17	Cover, water passage
NSS*	18	Gasket, water passage
S1-5	19	Screw, 1/4"-20 x 5/8" SEMS (2)
P1-34	20	Pin, primary valve
NSS*	21	Gasket, vaporizing chamber
AC1-64	22	Cover, vaporizing chamber: C1-64, J1-17
S1-3*	23	Screw, 10-24 x 5/8" SEMS (9)
NSS*	24	Seat, primary
NSS*	25	Seat support, primary
S2-93	26	Spring, primary valve
B3-25551	27	Bushing assy., fuel inlet
NSS	28	Pin, primer
NSS	29	Spring, primer

NSS = Not Serviced Separately:

In colder climates, the Model L vaporization capacity will be reduced by 20% during WOT operation. Due to lower rate of water flow in industrial application, Model L is rated at 200 H.P. in these installations.

\* Indicates repair kit components.

## Model L Series

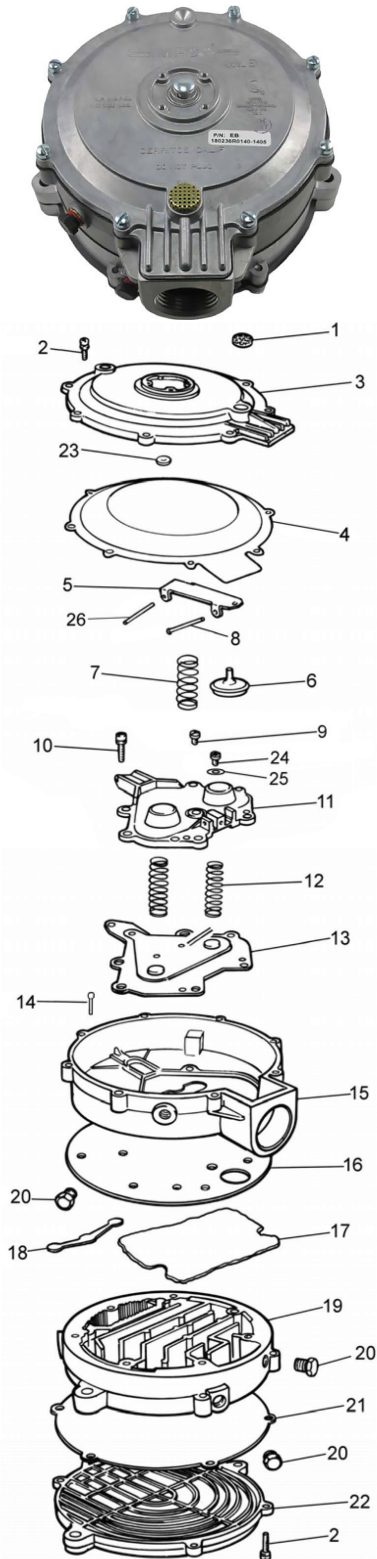
### Repair Kits



Part #	Description
RK-L	Buna
RK-L-2	Silicon

## Model E & PE Series

325 HP LP Gas



Part #	Ref. #	Description
NSS	1	Screen, atmosphere vent
S1-3*	2	Screw, 10-24 x 5/8" SEMS (8)
NSS	3	Cover assy., secondary
NSS*	4	Diaphragm assy., secondary, Hydrin
NSS*	4	Diaphragm assy., secondary, Silicone
NSS*	5	Lever, secondary
S4-25*	6	Seat, secondary (new)
S2-22	7	Spring, secondary regulator (blue), standard
S2-23***	7	Spring, secondary regulator (orange), optional
NSS	8	Pin, secondary lever fulcrum (Early Model)
NSS	8	Pin, secondary lever fulcrum (Later Model)
NSS*	9	Screw, 10-24 x 3/8" SEMS (2)
NSS*	10	Screw, 12-24 x 1-1/8" SEMS (7)
NSS	11	Cover, primary diaphragm (Early Model)
NSS	11	Cover, primary diaphragm (Later Model)
NSS	12	Spring, primary regulator (2)
NSS	13	Diaphragm assy., primary
NSS	14	Pin, primary valve
NSS	15	Body, regulator E Series
NSS*	16	Gasket, regulator body
NSS	17	Sponge
NSS*	18	Seat, primary
NSS	19	Body, assy., heat exchanger
NSS	20	Plug, hex head, 1/8 NPT (3)
NSS	21	Gasket, heat exchanger cover
NSS	22	Cover, heat exchanger
NSS*	23	Washer, hand primer
NSS	24	Screw, 8-32 x .25" (Later Model)
NSS	25	Flat washer (Later Model)
NSS*	26	Pin, lever diaphragm link

NSS = Not Serviced Separately

\*\* Two vapor outlet pressures are available. Orange secondary spring gives negative 1/2" water column. Blue secondary spring gives negative 1-1/2" water column.

To change any B regulator to O, change blue secondary spring to orange. Due to lower rate of water flow in industrial applications, Model E is rated at 200 H.P. in these installations.

\* Indicates repair kit components.

NOTE: PE Series does not carry UL approval.

## Model E & PE Series

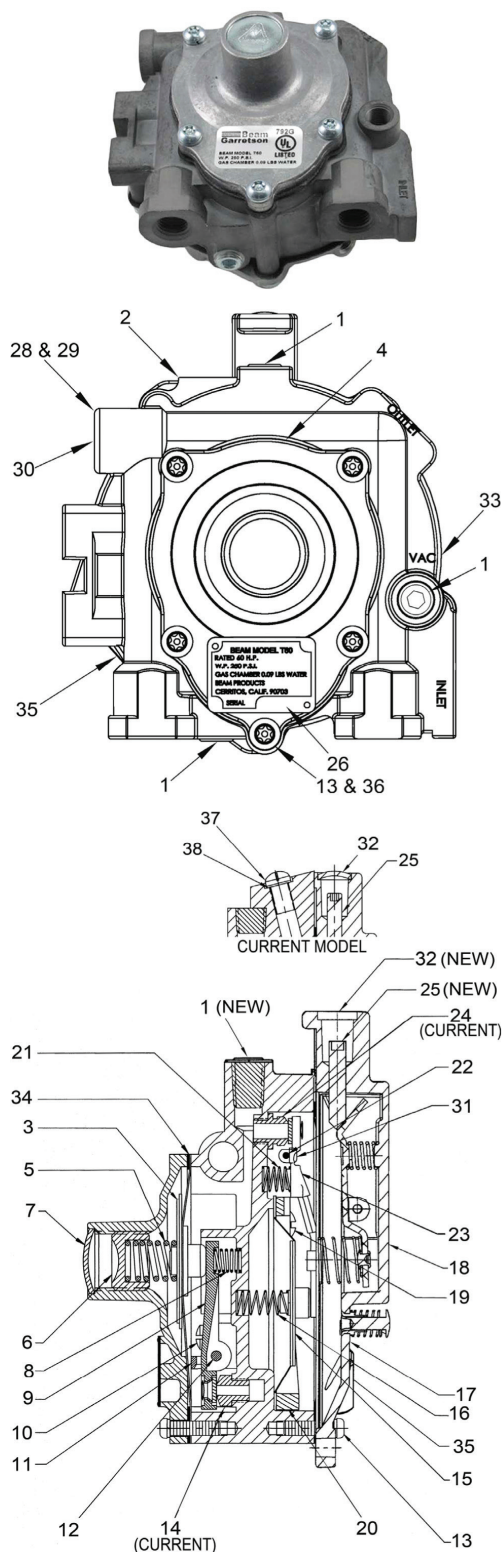
### Repair Kits



Part #	Description
RK-E	Buna
RK-E-2	Silicon



## Model T60

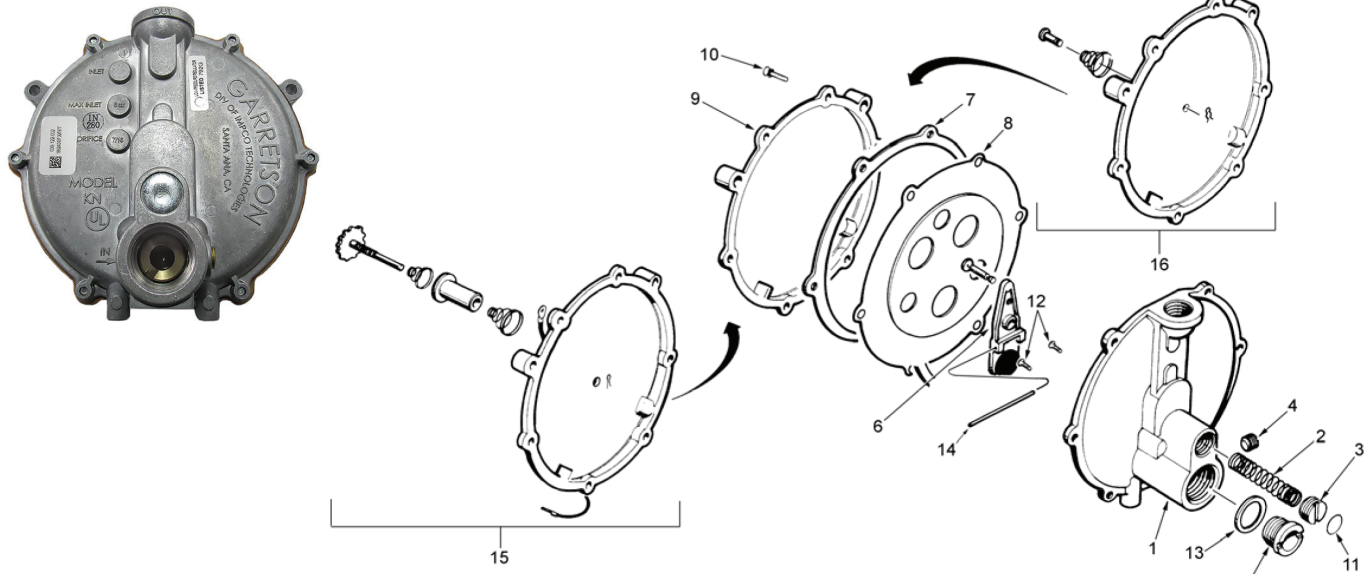


Part #	Ref. #	Description
P316699-001	1	Plug, 1/8 Socket Head Steel (New)
P3-13	1	Plug, 1/8-27 NPT* (1) (Early)
NSS	2	Casting, Regulator Body
NSS	3	Diaphragm Assembly* (1) (2)
NSS	4	Cover, Primary Regulator
NSS	5	Spring, Primary* (1)
NSS	6	Screw, Retainer Adjustabel Spring
P3-17956-8	7	Plug, Expansion* (1) (2)
60-4	8	Spring, Primary Lever* (1)
NSS	9	Lever Assy, Primary* (1) (2)
NSS	10	Screw, FIL HD, 10-32 UNF-2A x .31 L (Early)
NSS	10	Screw, M5 x 0.8 7.9 FIL HD, Torx (New)
NSS	11	Bridge, Primary
NSS	12	Pin, Primary Pivot* (1)
NSS	13	Screw, 10-32 x .62 Torx* (1)
NSS	13	Screw, Torx Tamp Res M5 x 16mm (New)
NSS	14	Orifice, Primary Regulator (Current)
60-15A	15	Diaphragm Assembly, Vac Lock* (1) (2)
NSS	16	Spring, Vac Lock* (1)
60-22A	17	Diaphragm, Secondary* (1) (2)
AC1-50001-004	18	Cover Assy (Current)
AC1-50001-004A	18	Cover Assy W/Primer (Current)
AC1-51985-001	18	Cover Assy (New)
AC1-51985-001A	18	Cover Assy W/Primer (New)
AC1-50001-001A	18	Cover Assy W/Primer & Mounting Tabs (New)
AC1-50001-003	18	Cover Assy W/Mounting Tabs (New)
NSS	19	Screw, Pan HD 10-32 x .38* (1)
NSS	19	Screw, Torx Tamp Res M5 x 16mm (New)
60-16	20	Ring, Vac Lock
NSS	21	Spring, Secondary Lever* (1)
NSS	22	Pin, Secondary Pivot* (1)
AL1-51097	23	Lever Assy, Secondary* (1) (2) (Current)
60-19B	23	Lever Assy, Secondary (New)
NSS	24	Orifice, Secondary Regulator (Current)
S1-17367	25	Screw, Adjustment* (1)
NSS	25	Screw, Adjustment (New)
NSS	26	Label
NSS	27	Deleted
400-25	28	Plug, Relief* (1) (2) (Current)
P3-50929-001	28	Plug, Freeze .50 Dis. x .38 (New)
G-25	29	Gasket, Plug* (1) (2) (Current)
NSS	30	Plug, Water Core
NSS	31	Screw, Pan HD, 10-32 UNF-2A x .25 L* (1)
NSS	31	Screw, Torx Tamp Res M5 x 16mm (New)
P3-17956-1	32	Plug, Expansion* (1) (2)
NSS	33	Label, Warning* (1) (2)
NSS	34	Gasket, Diaphragm* (1) (2)
NSS	35	Label, Ident-Silver
W1-5	36	Washer, Split Lock* (1) (Current)
NSS	37	Screw, FIL HD 1/4-28 UNF-2A* (1) (Current)
NSS	38	Washer, Copper-Special

NSS = Not Serviced Separately

\*Repair Kit: (1)=T60-RBK; (2)=T60-RK

## Model KN



Part #	Ref. #	Description	Qty.
NSS	1	Body, Regulator Model KN	1
039-00-12	2	Spring, 4 Oz. Model KN (Red)	1
039-00-13	2	Spring, 4 Oz. Model KN (Green)	1
NSS	3	Screw, Adjusting	1
NSS	4	Fitting, 1/8 NPT Hex Sch Plug	1
NSS	5	Orifice, 1/2" Id, KN Regulator	1
NSS*	6	Lever & Seal Assy	1
NSS*	7	Gasket, Secondary Diaphragm	1
NSS*	8	Diaphragm, Assy Reg Vmq	1
NSS	9	Cover, Regulator Diaphragm	1
NSS*	10	Screw, 10-32 x 5/8 Torx Pan Stlzn	6
P3-17956-10*	11	Plug, Expansion	1
NSS*	12	Screw, 4-40 x 1/4 Torx Ph Tt Stlzn	2
NSS	13	Gasket, Orifice	1
NSS*	14	Pin, Pivot	1
039-00-52	15	Cover, Auto Prime Assy	1
NSS	16	Cover, Manual Prime Assy	1

NSS = Not Service Separately

\*Included in Repair Kit 039-99

### Options & Accessories

Part #	Description	Qty.
039-00-12	Spring, 4 Oz. Model KN (Red)	1
039-00-13	Spring, 6 Oz. Model KN (Green)	1
039-00-41	Pin, Primer Mod KN	1
039-00-42	Spring, Primer .38" O.D. .19" I.D. .02"	1
039-99	Repair Kit, KN	1
039-00-43	Clip, Primer Pin	1

## Model IMP Series

### Natural & LP Gas

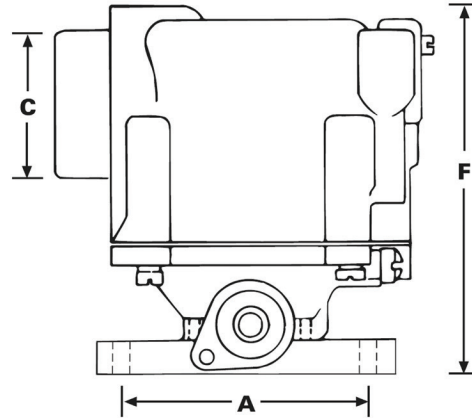


The IMPCO IMP Series of Regulators are low pressure, dry gas regulators intended for use with propane or natural gas. Typical applications include all types of stationary, gas-fired appliances and equipment utilizing a low-pressure gas supply. The IMP Series regulators feature a unique conical valve design, which permits low resistance straight-through flow. This design provides high flow at low pressures and enable the regulator to handle large capacity appliances with limited supply pressure.

Part #	Fuel Type	Inlet Pressure Max.	Outlet Pressure	HP	Operating Temperature Range	Fuel Filtration	Mounting Position	Applications
IMP52	LPG Vapor or Natural Gas	20" w.c.	3" to 6" w.c.	100 hp	-40°F to 250°F	40 micron	Vertical	Stationary and Industrial
IMP53	LPG Vapor or Natural Gas	20" w.c.	3" to 6" w.c.	180 hp	-40°F to 250°F	40 micron	Vertical	Stationary and Industrial
IMP61	LPG Vapor or Natural Gas	20" w.c.	3" to 6" w.c.	350 hp	-40°F to 250°F	40 micron	Vertical	Stationary and Industrial
IMP81	LPG Vapor or Natural Gas	20" w.c.	3" to 6" w.c.	550 hp	-40°F to 250°F	40 micron	Vertical	Stationary and Industrial
IMP91	LPG Vapor or Natural Gas	20" w.c.	3" to 6" w.c.	850 hp	-40°F to 250°F	40 micron	Vertical	Stationary and Industrial

## Model CA55

### Standard Series Carburetors for Natural & LP Gas

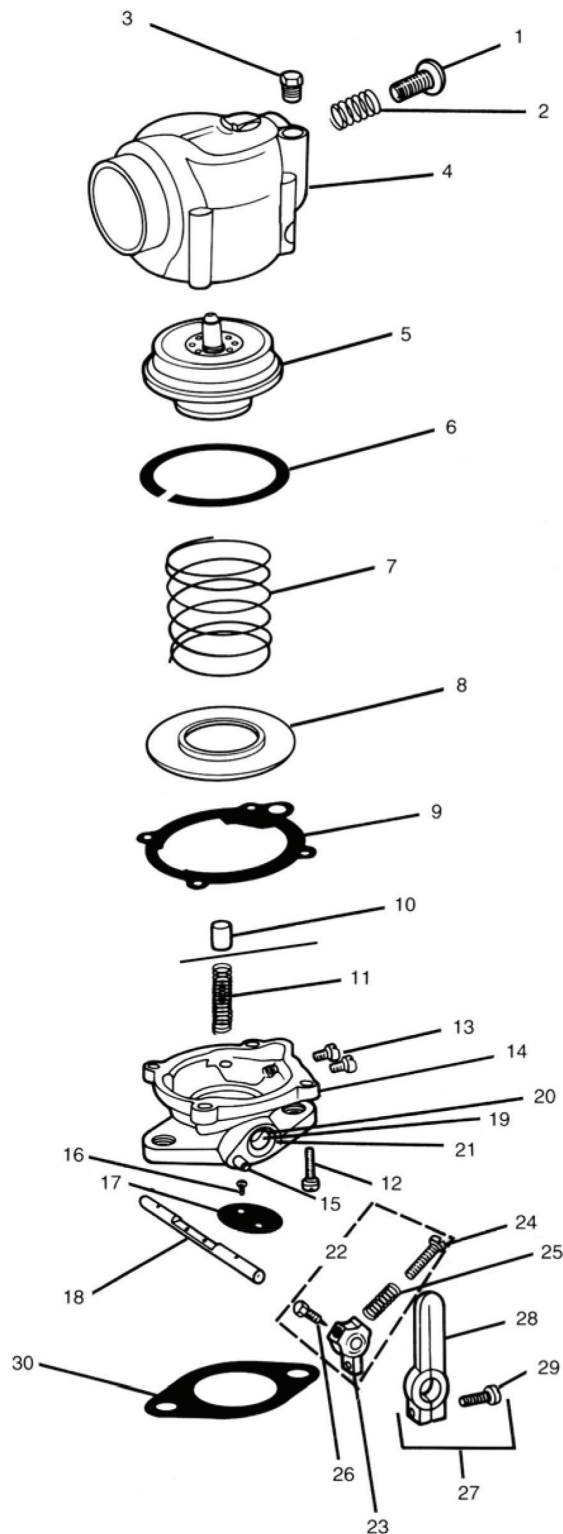


Impco's CA55 Series carburetors are offered in four design variations, providing proven, effective solutions for optimum metering and delivery of either alternative fuel or, in dual fuel configurations, gasoline in engines up to 75 horsepower. The standard model can be mounted in either an updraft or downdraft orientation, feeding either LPG or natural gas to engines from 1.5 to 70 horsepower. The maximum flow rate is 115 cfm. Various SAE flanges and airhorn sizes are available.

Part #	Mixer	Throttle Body	SAE Flange	NPT Fuel Inlet	A Center-to-Center Bolt Spacing	C Mixed Air Horn Diameter	F Overall Height
CA55-4	CA55M-2	AT2-25	3/4"	3/8"	2-1/4"	1-5/8"	3-3/4"
CA555-6	CA55M-4	AT2-26	1"	3/8"	2-3/8"	1-7/8"	3-3/4"
CA55-8	CA55M-5	AT2-27	1-1/4"	3/8"	2-11/16"	2-1/16"	3-3/4"
CA55-10	CA55M-3	AT2-26	1"	3/8"	2-3/8"	1-3/4"	3-3/4"
CA55-12	CA55M-1	AT2-25	3/4"	3/8"	2-1/4"	1-1/2"	3-3/4"
CA55-14	CA55M-1	AT2-26	1"	3/8"	2-3/8"	1-1/2"	3-3/4"
CA55-20	CA55M-2	AT2-26	1"	3/8"	2-3/8"	1-5/8"	3-3/4"
CA55-40	CA55M-5	AT2-26	1"	3/8"	2-3/8"	2-1/16"	3-3/4"
CA55-40-2	CA55M-5	AT2-26	1"	3/8"	2-3/8"	2-1/16"	3-3/4"
CA55-58	CA55M-3	AT2-26	1"	3/8"	2-3/8"	1-3/4"	3-3/4"
CA55-64	CA55M-2	AT2-26	1"	3/8"	2-3/8"	1-5/8"	3-3/4"
CA55-66	CA55M-2	AT2-26	1"	3/8"	2-3/8"	1-5/8"	3-3/4"



## Model CA55 Standard Series



Part #	Ref. #	Description
S1-74	1	Idle screw
NSS	2	Spring, idle screw
NSS	3	Plug, 1/8" NPT
NSS	4	Body assy.
NSS*	5	Air valve assy. (std.)
AV1-14926	5	Air valve assy. (lean)
NSS	6	Sealing ring, air valve
NSS	7	Spring, air valve
S2-14681	7	Spring, air valve, light tension
NSS*	8	Check-valve plate assy.:
G1-92*	9	Gasket, throttle body to mixer
NSS	10	Piston, idle cut-off
NSS	11	Spring, idle cut-off
NSS	12	Screw, 10-24 x 5/8" SEMS (4)
S1-69*	13	Screw, 1/4"-28 x 5/16" (2)
NSS	14	Throat, 1/2" SAE flange
NSS	14	Throat, 3/4" SAE flange
NSS	14	Throat, 1" SAE flange
NSS	14	Throat, 1-1/4" SAE flange
NSS	15	Pin, throttle stop
NSS	16	Screw, 6-32 x 1/4" SEMS (2)
NSS	17	Fly, 1/2"
NSS	17	Fly, 3/4"
NSS	17	Fly, 1"
NSS	17	Fly, 1-3/4"
S5-6	18	Throttle shaft, 1/4" diameter
NSS	19	Bearing, Oilite, 1/2" i.d. (2)
NSS	19	Bearing, needle, 1/4" i.d. optional (2)
NSS	20	Seal, 1/4" shaft (2)
NSS	21	Ring, seal retainer
AL1-8-1	22	Throttle stop assy., 1/4" i.d.
NSS	23	Throttle stop lever
NSS	24	Stop screw, 10-32 x 3/4"
S2-15	25	Spring, idle stop screw
S1-18	26	Pin screw, throttle stop
AL1-7-1	27	Throttle lever, w/screw
NSS	28	Throttle lever
NSS	29	Screw, 10-24 x 5/8"
NSS	30	Gasket, 1/2" SAE flange
G1-16	30	Gasket, 3/4" SAE flange
G1-17	30	Gasket, 1" SAE flange
G1-18	30	Gasket, 1-1/4" SAE flange
G1-120	30	Gasket, flange

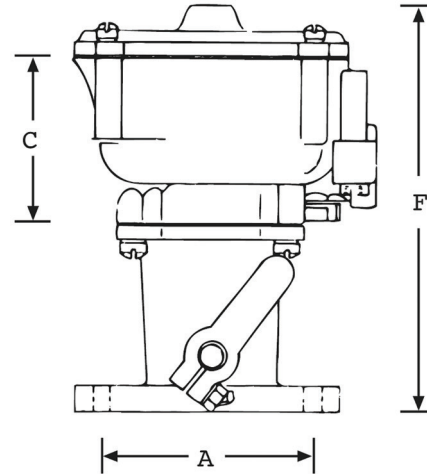
NSS = Not Service Separately

\*Included in Repair Kit

# Carburetors

## Model 100 Series

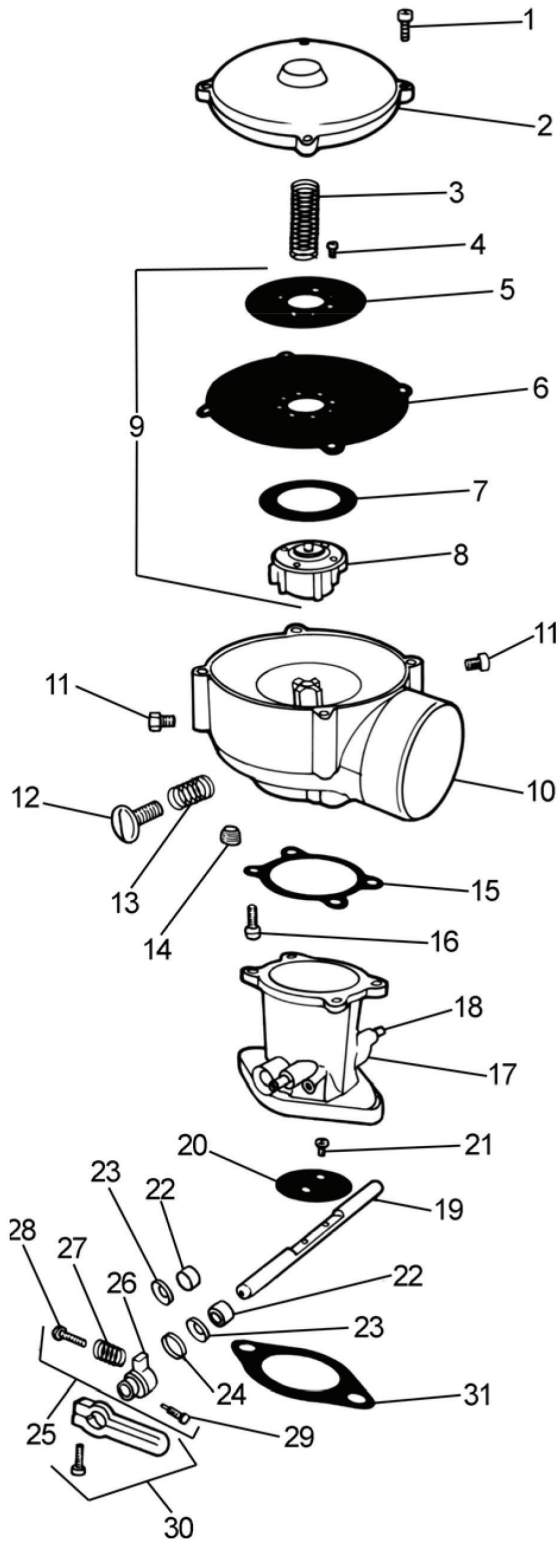
### Standard Series Carburetors for Natural & LP Gas



The Model 100 is a single diaphragm air-gas valve carburetor/mixer. It offers a 90 degree air inlet to provide low overhead clearance, and is available with several Air Horn and throttle body options. This unit is available for LPG Vapor and Natural Gas applications with air flow requirements up to 197 CFM. The Model 100 is also available for feedback applications with the 'FB' designation. The 100 mixer provides a convenient 1/8 NPT balance port and two separate air valve vacuum ports. Additional low speed, idle mixture control can be obtained to lean air/fuel mixtures through the use of optional shims.

Part #	Mixer	Throttle Body	A Center-to-Center Bolt Spacing	C Mixed Air Horn Diameter	F Overall Height
CA100-2	CA100M-1	AT2-1	2-1/4"	1-1/2"	4-5/8"
CA100-4	CA100M-1	AT2-2	2-3/8"	1-1/2"	4-5/8"
CA100-6	CA100M-2	AT2-2	2-3/8"	1-7/8"	4-5/8"
CA100-8	CA100M-3	AT2-3	2-11/16"	2-1/16"	5-7/8"
CA100-10	CA100M-4	AT2-3	2-11/16"	2-5/16"	5-7/8"
CA100-12	CA100M-4	AT2-4-1	2-15/16"	2-5/16"	6-1/16"
CA100-26	CA100M-3	AT2-2	2-3/8"	2-1/16"	4-5/8"
CA100-44	CA100M-1	AT2-3	2-11/16"	1-1/2"	5-7/8"
CA100-45	CA100M-2	AT2-3	1-11/16"	1-7/8"	5-7/8"
CA100-46	CA100M-4	AT2-4-3	3-5/16"	2-5/16"	6"
CA100-58	CA100M-5	AT2-1	2-1/4"	1-5/8"	4-5/8"

## Model 100 Series

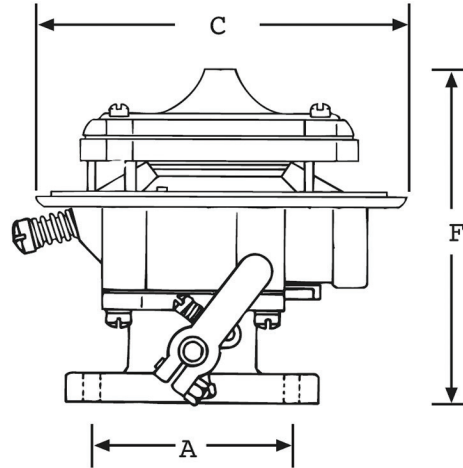


Part #	Ref. #	Description
S1-3	1	Screw, 10-24 x 5/8" SEMS (4)
C1-17	2	Cover
S2-85	3	Spring, air valve
S1-22	4	Screw, 6-32 x 1/4" SEMS (4)
P2-22	5	Plate, backup
D1-17	6	Diaphragm
D1-17-2	6	Diaphragm, silicone
R1-19	7	Ring, air valve
NSS	8	Air gas valve assy.
AV1-14	9	Valve and diaphragm assy., complete
AV1-14-2-962	9	Air Valve 30/35
NSS	10	Body, CA100M & 110M 2-5/6" AH
S1-69	11	Screw, 1/4"-28 x 5/16" (3)
S1-74	12	Screw idle
S2-88	13	Spring, idle screw
NSS	14	Plug, 1/8" pipe, brass
G1-11	15	Gasket, throttle body to mixer
S1-19	16	Screw, 12-24 x 5/8" SEMS (4)
NSS	17	Throttle body
NSS	18	Pin, throttle stop (2)
S5-1	19	Throttle shaft, 1/4" dia.
NSS	20	Fly, 3/4"
NSS	20	Fly, 1"
NSS	20	Fly, 1-1/4"
NSS	20	Fly, 1-1/2"
NSS	21	Screw, 6-32 x 1/4" SEMS (2)
NSS	22	Bearing, Oilite, 1/2" i.d. (2)
NSS	22	Bearing, Oilite, 5/16" i.d. (2)
NSS	22	Bearing, needle, 5/16" i.d. optional (2)
NSS	23	Seal, 1/4" shaft (2)
NSS	23	Seal, 5/16" shaft (2)
NSS	23	Seal, internal 5/16" i.d., optional (2)
R1-9	24	Ring, seal retainer (2)
AL1-8-1	25	Throttle stop assy., 1/4" i.d.
AL1-8-2	25	Throttle stop assy., 5/16" i.d.
NSS	26	Throttle stop lever 1/4" i.d.
S1-21	27	Spring, idle stop screw
S2-15	28	Screw, 10-32 x 3/4"
S1-18	29	Pin screw, throttle stop
NSS	30	Throttle lever, short, w/screw
NSS	30	Throttle lever, long, w/screw 1
G1-16	31	Gasket, 3/4" flange
G1-17	31	Gasket, 1" flange
G1-18	31	Gasket, 1-1/4" SAE flange
NSS	31	Gaskets, 1-1/4" lange

NSS = Not Serviced Separately

## Model 125 Series

For Natural & LP Gas

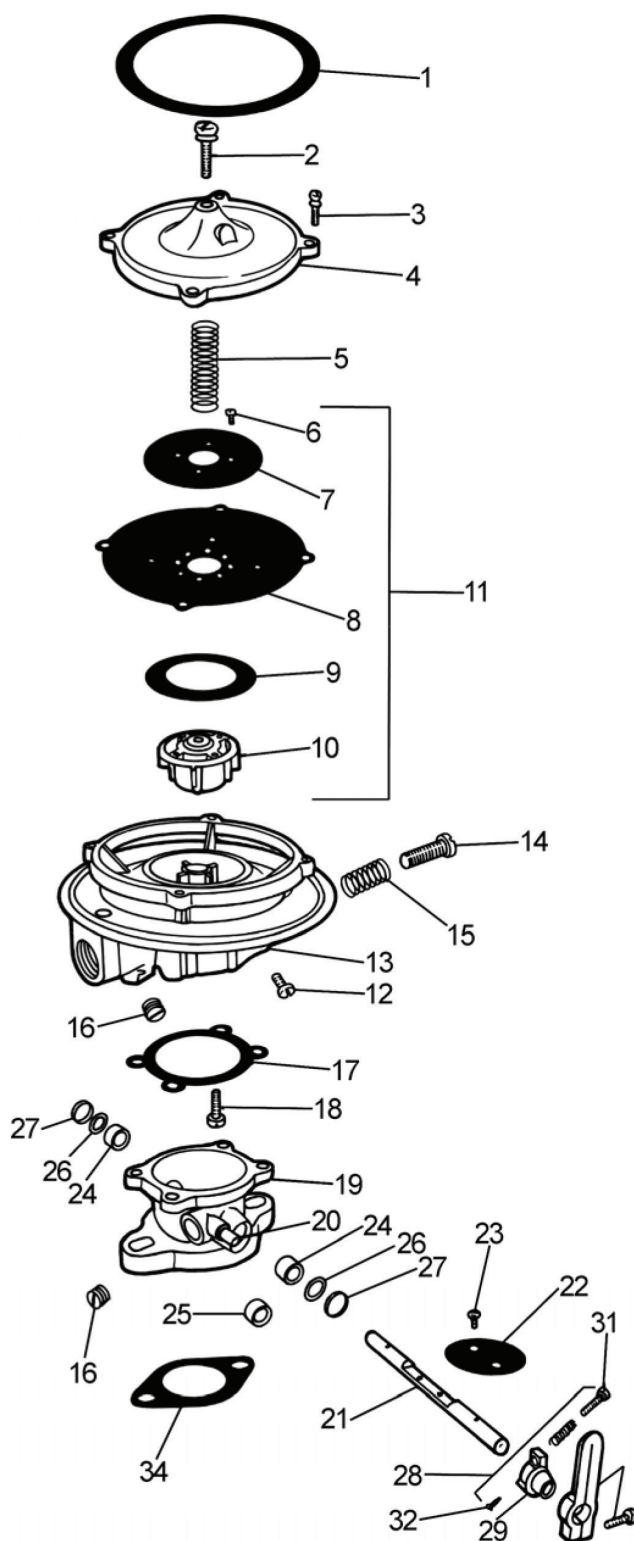


The Model 125 carburetor is a single-diaphragm air valve carburetor/mixer for applications requiring air flow up to 235 CFM. It offers a down draft air inlet that can be used for remote air filtration or open element type air filters. This unit is available for LPG Vapor and Natural Gas Vapor applications. The Model 125 is also available for feedback applications with the "FB" designation. Two separate air valve vacuum supplies are available with this mixer. Additional low speed mixture control can be obtained to lean air/fuel mixtures with optional shims.

Part #	Mixer	Throttle Body	A Center-to-Center Bolt Spacing	C Mixed Air Horn Diameter	F Overall Height
CA125-2	CA125M	AT-2	2-3/8"	2-15/16"	5-9/16"
CA125-6	CA125M	AT2-16-1	2-13/16"	2-15/16"	5-9/16"
CA125-12	CA125M	AT2-16-1	2-13/16"	2-5/8"	5-9/16"
<b>Additional Standard Throttle Bodies</b>					
—		AT2-1	2-1/4"		—
		AT2-3	2-11/16"		
		AT2-4-1	2-15/16"		
		AT2-23	1-1/4" X 2-11/16"		



## Model 125 Series

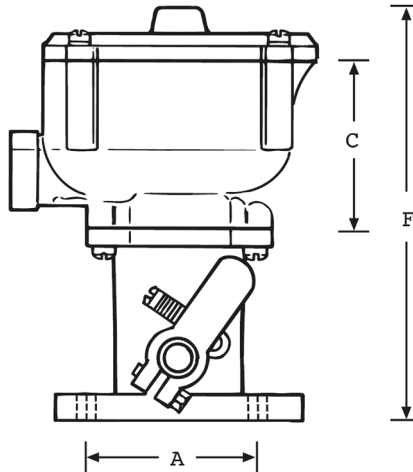


Part #	Ref. #	Description
G1-66	1	Gasket, mixer to air horn
NSS	2	Screw, 1/4"-20 x 1" SEMS
S1-3	3	Screw, 10-24 x 5/8" SEMS (4)
C1-26	4	Cover, air valve
S2-85	5	Spring, air valve
S1-22	6	Screw, 6-32 x 1/4" SEMS (4)
P2-22	7	Plate, backup
D1-17	8	Diaphragm
D1-17-2	8	Diaphragm, silicone
R1-19	9	Ring, air valve
BV1-14	10	Air gas valve assy.
AV1-14	11	Std. valve and diaphragm
AV1-14-3	11	Std. valve and diaphragm, Silicone
S1-69	12	Screw, 1/4"-28 x 5/16" (3)
NSS	13	Body assy.
NSS	14	Idle screw
S2-16	15	Spring, idle screw
NSS	16	Plug, 1/8" pipe, brass
NSS	17	Gasket, throttle body to mixer
S1-19	18	Screw, 12-24 x 5/8" SEMS (4)
NSS	19	Throat, 3/4" SAE flange
NSS	19	Throat, 1" SAE flange
NSS	19	Throat, 1-1/4" SAE flange
NSS	19	Throat, 1-1/2" SAE flange
NSS	19	Throat, 1-3/4" SAE flange
NSS	19	Throat, 1-1/4" & 1-1/2" SAE flange, short
NSS	19	Throat, 1-1/4" SAE flange, short
NSS	20	Pin, throttle stop (2)
S5-1	21	Throttle shaft, 1/4" dia.
S5-2	21	Throttle shaft, 5/16" dia.
NSS	22	Fly, 3/4"
NSS	22	Fly, 1"
NSS	22	Fly, 1-1/2"
NSS	22	Fly, 1-3/4"
NSS	23	Screw, 6-32 x 1/4" SEMS (2)
S1-12	23	Screw, 8-32 x 5/16" SEMS (2)
NSS	24	Bearing, Oilite, 1/2" i.d. (2)
NSS	24	Bearing, Oilite, 5/16" i.d. (2)
NSS	25	Bearing, needle, 1/4" i.d. optional (2)
NSS	26	Seal, 1/4" shaft (2)
NSS	26	Seal, 5/16" shaft (2)
S3-25	26	Seal, internal 5/16" i.d., optional (2)
R1-9	27	Ring, seal retainer (2)
NSS	28	Throttle stop assy., 5/16" i.d
NSS	29	Throttle stop lever
S2-15	30	Spring, idle stop screw
S1-21	31	Screw, 10-32 x 3/4"
S1-18	32	Pin screw, throttle stop
AL1-7-3	33	Throttle lever, short, w/screw
AL1-7-1	33	Throttle lever, long, w/screw
G1-16	34	Gasket, 3/4" flange
G1-17	34	Gasket, 1" flange
NSS	34	Gasket, 1-1/4" flange
NSS	34	Gasket, 1-1/2" flange
G1-23	34	Gasket, 1-3/4" flange
G1-56	34	Gaskets, 1-1/4" - 1-1/2" flange

NSS = Not Serviced Separately

## Model 200 Series

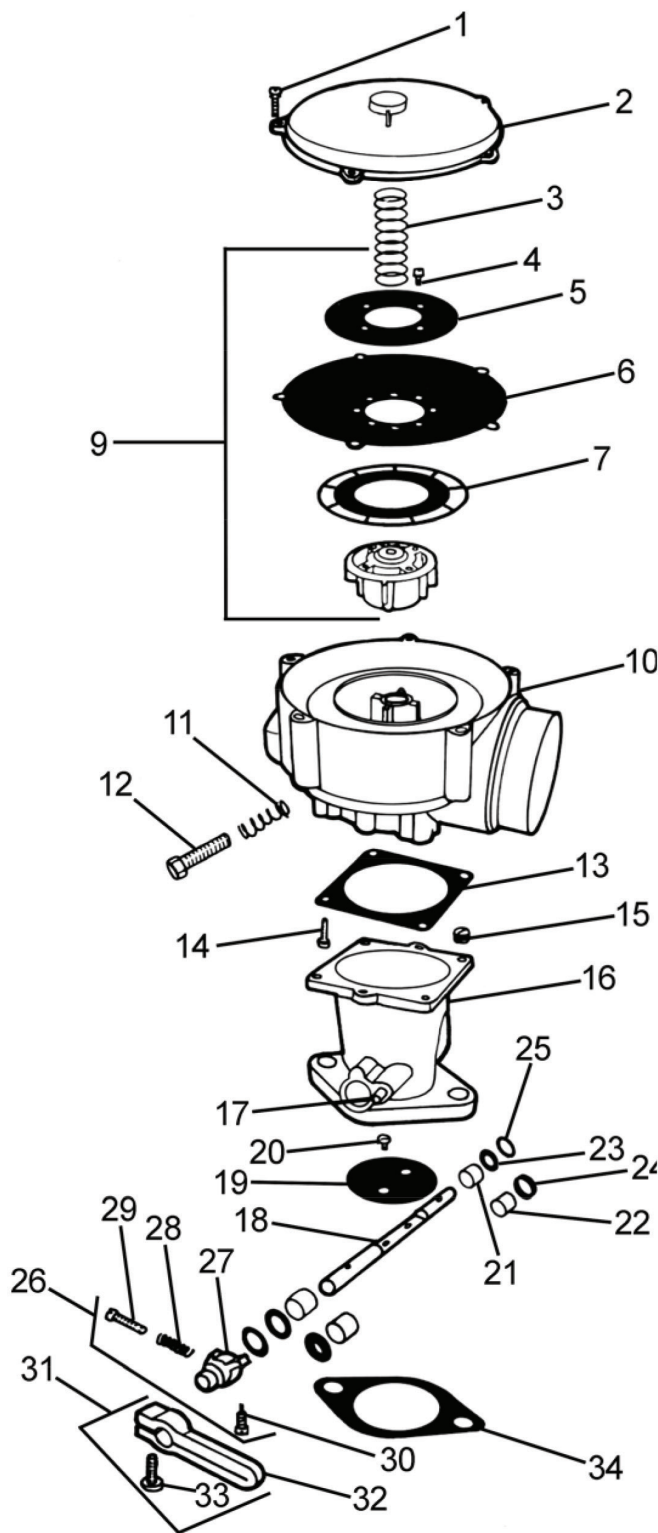
### Standard Series Carburetors for Natural & LP Gas



The Model 200 is a single diaphragm air-valve carburetor/mixer. It offers a 90° air inlet to provide low overhead clearance, and is available with several air horn and throttle valve options. This unit is available for LPG Vapor or Natural Gas for applications with air flow requirements up to 345 CFM. All DG model mixers reduce air flow by 30%. The Model 200 is also available for feedback applications with the 'FB' designation. The 200 mixer provides a convenient 1/8" balance port at the air inlet. Additional low speed idle mixture control can be obtained to lean air/fuel mixtures through the use of optional shims.

Part #	Mixer	Throttle Body	A Center-to-Center Bolt Spacing	C Mixed Air Horn Diameter	F Overall Height
<b>200-2</b>	200M-1	AT2-4-2	2-15/16"	2-5/8"	6-7/8"
<b>200-2-2</b>	200M-1-2	AT2-4-2	2-15/16"	2-5/8"	6-7/8"
<b>200-4</b>	200M-1	AT2-5	2-5/16"	2-5/8"	7-3/8"
<b>200-6</b>	200M-2	AT2-6	3-9/16"	3-1/16"	7-3/8"
<b>200-6-2</b>	200M-2-2	AT2-6	3-9/16"	3-1/16"	7-3/8"
<b>200-8</b>	200M-2	AT2-5	3-5/16"	3-1/16"	7-3/8"
<b>200-8-2</b>	200M-2-2	AT2-5	3-5/16"	3-1/16"	7-3/8"
<b>DG200-29</b>	NSS	NSS	3-9/16"	3-1/16"	7-3/8"

## Model 200 Series

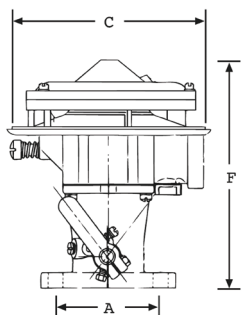


Part #	Ref. #	Description
S1-3	1	Screw, 10-24 x 5/8" SEMS (4)
C1-18	2	Cover
S2-17	3	Spring, air valve
S1-12	4	Screw, 8-32 x 5/16" SEMS (4)
P2-21	5	Plate, backup
D1-16-1	6	Diaphragm
D1-16-2	6	Diaphragm, silicone
R1-17	7	Ring, air valve
NSS	8	Air gas valve assy.
AV1-12	9	Air gas valve assy. w/ diaphragm
DG-AV1-12-2	9	Digester air gas valve assy. w/ Silicone diaphragm
NSS	10	Body assy., 2-5/8" air horn
AB1-11-2	10	Body assy., 3 1/16" air horn
S2-16	11	Spring, idle screw
NSS	12	Idle screw
G1-21	13	Gasket, throttle body to mixer
S1-19	14	Screw, 12-24 x 5/8" SEMS (4)
NSS	15	Plug, 1/8" pipe, brass
NSS	16	Throat, 1-1/2" SAE flange
NSS	16	Throat, 1-1/4" SAE flange
NSS	16	Throat, 2" SAE flange
NSS	17	Pin, throttle stop (2)
S5-2	18	Throttle shaft, 5/16" diameter (T2-4-2)
S5-3	18	Throttle shaft, 3/8" diameter (T2-5, T2-6)
NSS	19	Fly, 1-1/2"
NSS	19	Fly, 1-3/4"
NSS	19	Fly, 2"
S1-12	20	Screw, 8-32 x 5/16" SEMS (4)
B2-13	21	Bearing, Oilite, 3/8" i.d. (2)
B2-7	22	Bearing, needle, 5/16" i.d. (2)
NSS	22	Bearing, needle, 3/8" i.d. (2)
NSS	23	Seal, 5/16" shaft (2)
S3-11	23	Seal, 3/8" shaft (2)
S3-20	24	Seal, internal, 3/8" i.d. optional
R1-9	25	Ring, seal retainer, 5/16" shaft (2)
R1-8	25	Ring, seal retainer, 3/8" shaft (2)
AL1-8-2	26	Throttle stop assy., 5/16" i.d.
AL1-10	26	Throttle stop assy., 3/8" i.d.
NSS	27	Throttle stop lever 5/16" i.d.
NSS	27	Throttle stop lever 3/8" i.d.
S2-15	28	Spring, stop screw
S1-21	29	Stop screw, 10-32 x 3/4"
S1-18	30	Pin screw, throttle stop
AL1-7-1	31	Throttle lever with S1-17, L1-7-1
AL1-9-1	31	Throttle lever with S1-26, L1-9-1
AL1-9-1A	31	9/16" mounting i.d.
NSS	32	Throttle lever
NSS	33	Screw, 10-24 x 5/8"
NSS	33	Screw, 12-24 x 5/8"
G1-19	34	Gasket, 1-1/2" flange
G1-23	34	Gasket, 1-3/4" flange
G1-24	34	Gasket, 2" flange

NSS = Not Service Separately

## Model 225 Series 1V

### Standard Series Carburetors for Natural & LP Gas



The Model 225 carburetor is a single-diaphragm air valve carburetor/mixer. It offers a down-draft air inlet that can be used for remote air filtration or open-element type air filters. This unit is available for LPG Vapor or Natural Gas applications with air flow requirements up to 380 CFM (179.3 L/s). The Model 225 is also available for feedback applications with the 'FB' designation. Note: All DG model mixers reduce air flow by 30%. Two separate air valve vacuum supplies are available with this mixer. Additional low speed mixture control can be obtained to lean air/fuel mixtures with optional ring spacers/shims.

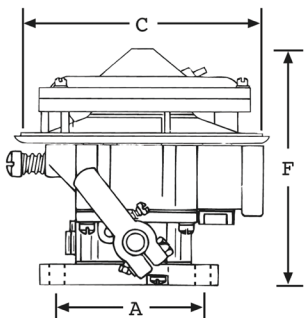
Part #	Mixer	Throttle Body	A Center-to-Center Bolt Spacing	C Mixed Air Horn Diameter	F Overall Height
225-52	225M	AT2-4-2	2-15/16"	5-13/16"	7-1/4"
225-54	225M	AT2-5	3-5/16"	5-13/16"	7-1/2"
225-56	225M	AT2-6	3-9/16"	5-13/16"	7-1/2"
CA225-52	CA225M	AT2-4-2	2-15/16"	5-13/16"	7-1/4"
CA225-54	CA225M	AT2-5	3-5/16"	5-13/16"	7-1/2"
CA225-56	CA225M	AT2-6	3 9/16	5-13/16"	7-1/2"
DG225-52	DG225M	AT2-4-2	2-15/16"	5-13/16"	7-1/4"
DG225-54	DG225M	AT2-5	3-5/16"	5-13/16"	7-1/2"
DG225-56	DG225M	AT2-6	3-9/16"	5-13/16"	7-1/2"

NOTES:

- (1) Order air cleaner assembly separately.
- (2) Order air horn separately, refer to optional equipment for specific air horn.

## Model 225 Series 2V

### Standard Series Carburetors for Natural & LP Gas



The Model 225 carburetor is a single-diaphragm air valve carburetor/mixer. It offers a down-draft air inlet that can be used for remote air filtration or open-element type air filters. This unit is available for LPG Vapor or Natural Gas applications with air flow requirements up to 380 CFM (179.3 L/s). The Model 225 is also available for feedback applications with the 'FB' designation. Note: All DG model mixers reduce air flow by 30%. Two separate air valve vacuum supplies are available with this mixer. Additional low speed mixture control can be obtained to lean air/fuel mixtures with optional ring spacers/shims.

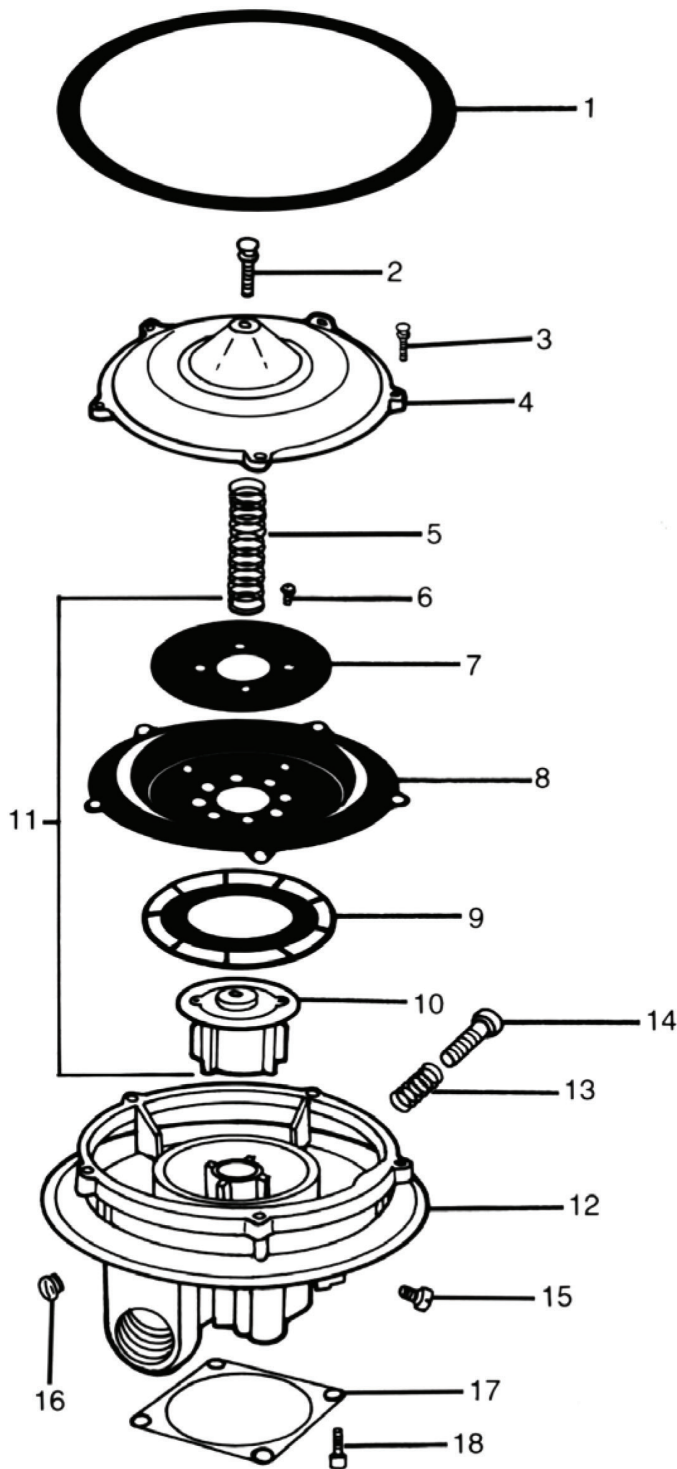
Part #	Mixer	Throttle Body	A Center-to-Center Bolt Spacing	C Mixed Air Horn Diameter	F Overall Height
225-11	225M	AT2-11-1	1-7/8" x 3-1/4"	5-13/16"	6-1/2"
225-12	225M	AT2-12	2" x 3-11/16"	5-13/16"	6-1/2"
225-13	225M	AT2-13-1	3-15/32" x 5-5/32"	5-13/16"	6-1/2"
225-15	225M	AT2-15	(2)	5-13/16"	6-1/2"
CA225-11	CA225M	AT2-11-1	1-7/8" x 3-1/4"	5-13/16"	6-1/2"
CA225-12	CA225M	AT2-12	2" x 3-11/16"	5-13/16"	6-1/2"
CA225-13	CA225M	AT2-13-1	3-15/32" x 5-5/32"	5-13/16"	6-1/2"
CA225-15	CA225M	AT2-15	(2)	5-13/16"	6-1/2"

NOTES:

- (1) Order air filter separately.
- (2) Refer to optional equipment for dimension information.



## Model 225 Series

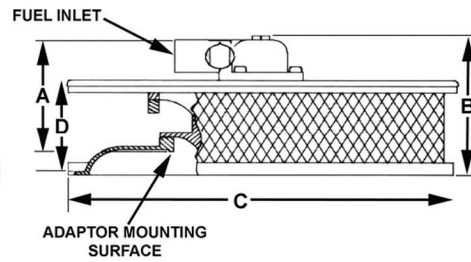


Part #	Ref. #	Description
G1-73	1	Gasket, mixer to air horn
S1-47	2	Screw, 1/4"-20 x 1" SEMS
S1-3	3	Screw, 10-24 x 5/8" SEMS (5)
NSS	4	Cover, air valve
S2-17	5	Spring, air valve
S1-12	6	Screw, 8-32 x 5/16" SEMS (4)
P2-21	7	Plate, backup
D1-16-1	8	Diaphragm
D1-16-2	8	Diaphragm, silicone
R1-17	9	Ring, air valve
BV1-12	10	Air gas valve assy., propane
DV1-12	10	Air gas valve assy., natural gas
AV1-12	11	Air gas valve assy., complete w/diagram, propane
CV1-12	11	Air gas valve assy., complete w/diagram, natural gas
NSS	12	Body assy.
S2-16	13	Spring, idle screw
NSS	14	Idle screw
S1-69	15	Screw, 1/4"-28 x 5/16" (3)
NSS	16	Plug, 1/8" pipe, brass
G1-21	17	Gasket, throttle body mixer
S1-19	18	Screw, 12-24 x 5/8" SEMS (4)

NSS = Not Service Separately

## Model 300A Series

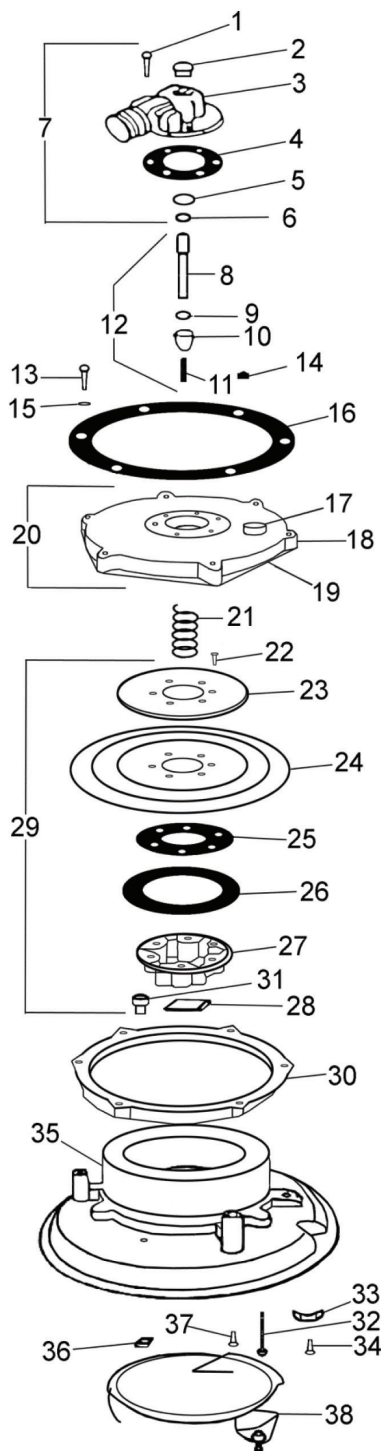
### Standard Series Carburetors for Natural & LP Gas



The Model 300A mixer is a single-diaphragm air valve for applications. It offers a down-draft air inlet that can be used for remote air filtration or open-element type air filters. This unit is available for LPG Vapor and Natural Gas applications with air flow requirements up to 348 CFM or 432 CFM depending on the part number. The 300A has numerous adapters to allow the installer to fit the 300A into most under hood vehicle applications. The Model 300A is also available for feedback applications with the 'FB' designation. The 300A can also be equipped with a cam mechanism to allow the air valve to be raised to its full open position to minimize any restriction in the base vehicle air stream. Optional air cleaner assemblies are also available for engines which require higher CFM air flow.

Part #	C Mounting Surface to Top of Fuel Inlet	F Overall Height
CA300A-M	3-1/2"	4-1/8"
CA300A-M-2	3-1/2"	4-1/8"
CA300A-1	3-1/2"	4-1/8"
CA300A-1-2	3-1/2"	4-1/8"
CA300A-20M	3-1/2"	4-1/8"
CA300A-20M-2	3-1/2"	4-1/8"
CA300A-21	3-1/2"	4-1/8"
CA300A-21-2	3-1/2"	4-1/8"
CA300A-22	3-1/2"	4-1/8"
CA300A-22-2	3-1/2"	4-1/8"
CA300AM-50-2	3-1/2"	4-1/8"
CA300AM-51-2	3-1/2"	4-1/8"
CA300A-52-2	3-1/2"	4-1/8"
CA300AM-70-2	3-1/2"	4-1/8"
CA300A-71-2	3-1/2"	4-1/8"
CA300A-72-2	3-1/2"	4-1/8"
FB300AM-2	3-1/2"	4-1/8"
FB300AM-50-2	3-1/2"	4-1/8"

## Model 300A Series 1 & 50



Part #	Ref. #	Description
S1-3	1	+ Screw, 10-24 x 5/8" SEMS (3)
P3-2	2	Plug, idle adjustment
AE1-4	3	Elbow with power adjustment: E1-4, V2-9, W1-12
G1-2	4	*+ Gasket, gas elbow
R1-93	5	*+ Ring, seal retainer
S3-	6	*+ Seal, idle screw
BE1-4-1	7	Elbow assembly complete: P3-2, AE1-4, R1-9, S3-3
S1-15	8	Screw, idle adjustment
NSS	9	* Seat, gas valve
NSS	10	Valve Gas Mixer, 300A Series.
V2-49	10	Valve Gas Mixer, FB300A.
V2-50		Valve Gas Mixer, FB300A.
S2-3	11	Spring, gas valve
NSS	12	+ Gas valve assy. complete
NSS	12	Gas valve assy. complete
NSS	13	+ Screw, 10-24 x 1" (3)
NSS	14	*+ Nut, dome 10-24 (3)
NSS	15	+ Washer, No. 10 light flat (6)
NSS	16	*+ Gasket, filter cover
NSS	17	+ Rivet, vent valve
NSS	18	+ Valve, cover vent
NSS	19	Cover, diaphragm
NSS	20	Cover assy., diaphragm w/vent valve
NSS	20	+ Cover assy., diaphragm w/vent valve
S2-2	21	+ Spring, air valve
S1-12	22	Screw, 8-32 x 5/16" SEMS (4)
P2-1	23	Plate, diaphragm backup
NSS	24	* Diaphragm, air valve
NSS	24	* Diaphragm, air valve, silicone
NSS	25	* Gasket, air valve
R1-2	26	Ring, air valve
NSS	27	Valve, air metering: V1-10, L1-3, B3-24
NSS	28	* Lock, nylon idle adjustment
NSS	29	+ Air valve assy., w/diaphragm
NSS	29	+ Air valve assy., Silicone, w/diaphragm
NSS	30	Ring, diaphragm support
S1-5	31	Screw, 1/4"-20 x 5/8" hex head SEMS (3)
NSS	32	+ Screw, 10-24 x 1/2" SEMS (3)
NSS	33	Clamp, Boden wire
NSS	34	Screw, 10-32 x 5/8" SEMS (3)
NSS	35	Base assy., complete
NSS	36	Nut, square, 1/4"-20
S1-69	37	Screw, 1/4" x 5/16" (plug)
AC2-2	38	Cam assembly: C2-2, W1-2, S1-7

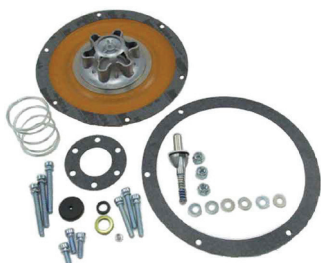
NSS = Not Service Separately

\* Indicates components of minor repair kit.

+ Indicates components of major repair kit.

## Model 300A Series 1 & 50

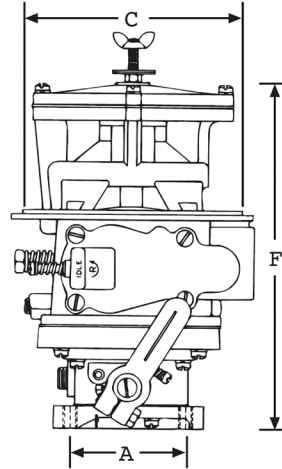
### Repair Kits



Part #	Description
RK300MI - 1/20-2	Minor repair kit
RK300MI - 50/70-2	Minor repair kit
RK300MA - 1/20-2	Major repair kit
RK300MA - 50/70-2	Major repair kit

## Model 425 Series

### Standard Series Carburetors for Natural & LP Gas



The Model 425 carburetor is a single-diaphragm air valve carburetor/mixer. It offers a down draft air inlet that can be used for remote air filtration or open-element type air filters. This unit is available for LPG Vapor and Natural Gas for applications requiring up to 460 CFM (217.1 L/s). The Model 425 is also available for feedback applications with the 'FB' designation. These FB mixers are available in a tamper resistant configuration, indicated by the "-CT" in the part number.

Part #	Voltage	Mixer	Throttle Body	A Center-to-Center Bolt Spacing	C Mixed Air Horn Diameter	F Overall Height
CA425-2	1V	CA425M	AT2-7	2-7/8"	5-1/8"	8-3/8"
CA425-4	1V	CA425M	AT2-8	3-1/4"	5-1/8"	8-3/8"
CA425-10	2V	CA425M	AT2-15	See Note	5-1/8"	7-3/4"
CA425-12	2V	CA425M	AT2-11-1	1-7/8" x 3-1/4"	5-1/8"	7-3/4"
CA425-14	2V	CA425M	AT2-12	2" x 3-11/16"	5-1/8"	7-3/4"
CA425-16	2V	CA425M	AT2-13-1	3-15/32" x 5-5/32"	5-1/8"	7-3/4"

(1) Reference diagram pg.3

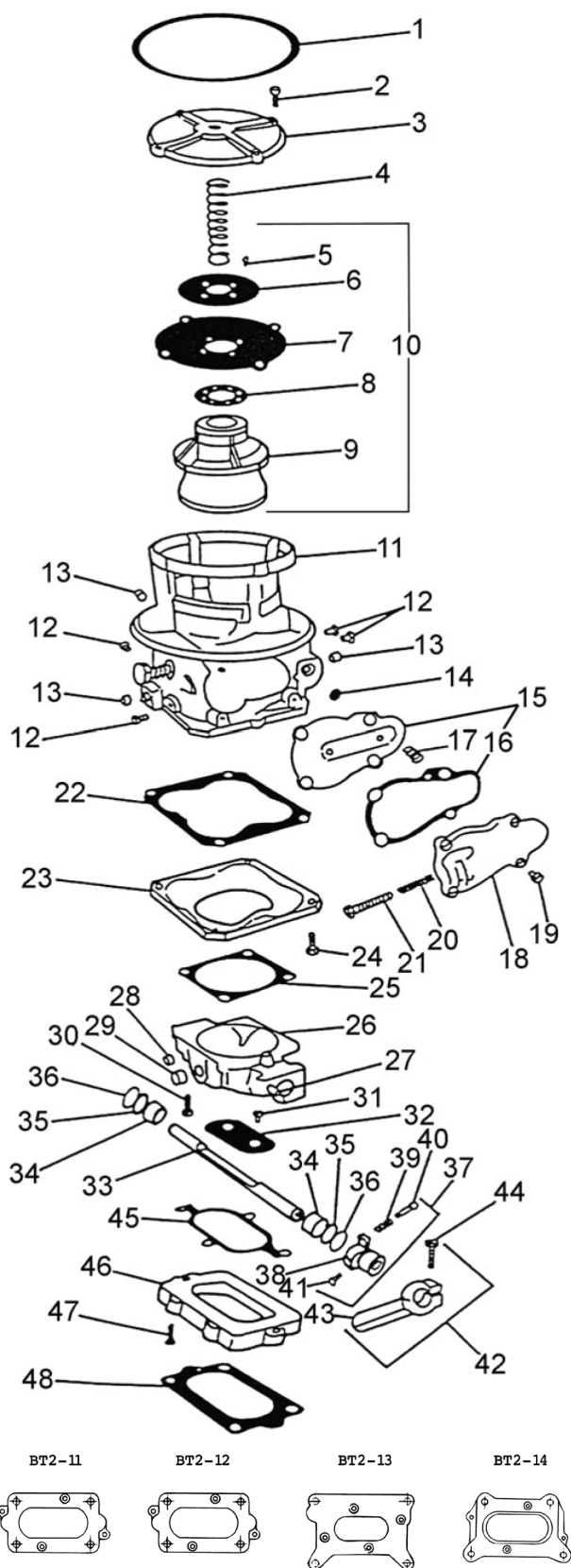
(2) Indicates silicon diaphragm

(3) 2V applications require additional adapter between throttle body and CA425M Mixer



# Carburetors

## Model 425 Series - 2V

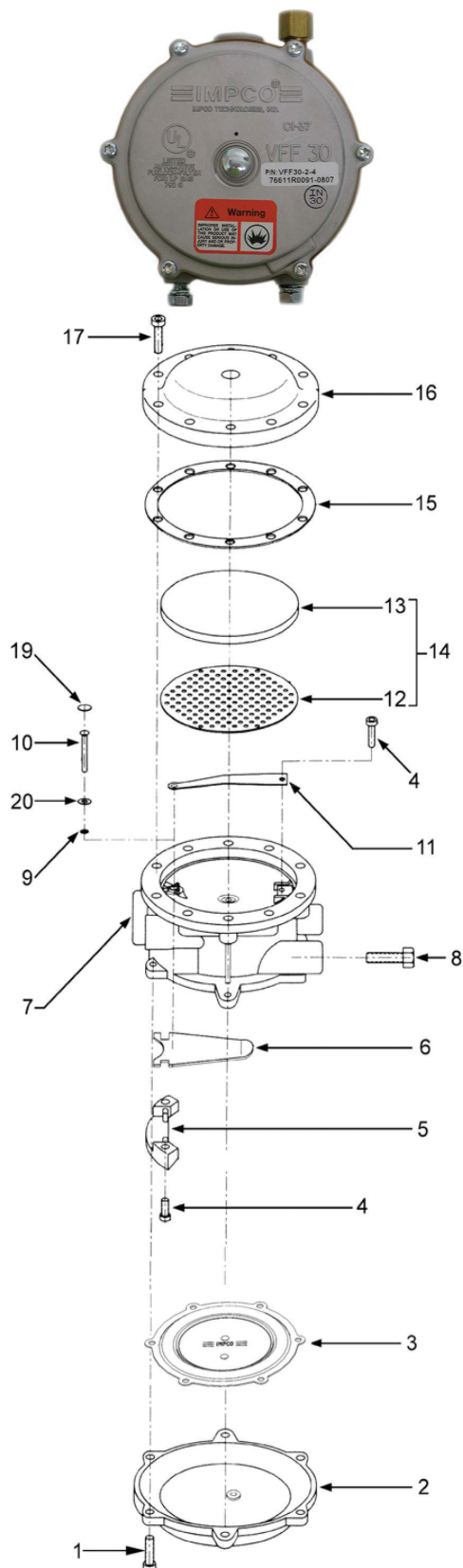


Part #	Ref. #	Description
G1-66	1	Gasket, air horn
S1-3	2	Screw, 10-24 x 5/8" SEMS (5)
C1-30	3	Cover, air valve diaphragm
S2-30	4	Spring, air valve
NSS	5	Screw, 6-32 x 1/4" SEMS (4)
NSS	6	Plate, backup
D1-18	7	Diaphragm, air valve
D1-25	7	Diaphragm, air valve, silicone
NSS	8	Gasket, air valve
BV1-16	9	Air gas valve
AV1-16	10	Air gas valve assy.
AB1-27	11	Gas body assy. (High BTU)
AB1-67-3	11	Gas body assy. (Low BTU)
S1-69	12	Screw, 1/4"-28 x 5/16" (4)
NSS	13	Plug, 1/8" pipe (3)
S4-13	14	Seat, idle screw
AD1-28-1	15	Idle diaphragm assy. (Includes #16)
NSS	16	Gasket, idle diaphragm
S2-24	17	Spring, idle valve
C1-31	18	Cover, idle valve
S1-40	19	Screw, 10-24 x 3/8" SEMS (4)
S2-89	20	Spring, idle adjustment
S1-51	21	Screw, 10-32 x 1 1/4" idle adjustment
G1-74	22	Gasket, mixer to adapter
A3-47	23	Adapter, mixer to throttle body
S1-19	24	Screw, 12-24 x 5/8" SEMS (4)
G1-21	25	Gasket, adapter to throttle body
NSS	26	Body, 2B throttle
NSS	27	Pin, throttle stop (2)
NSS	28	Plug 1/8" pipe
P3-5	29	Plug 1/4" pipe
S1-19	30	Screw, 12-24 x 5/8" SEMS (4)
NSS	31	Screw, 10-32 x 5/16" SEMS (2)
NSS	32	Fly, 2B
NSS	33	Throttle shaft, 7/16" diameter
B2-9	34	Bearing, needle 7/16" i.d. (2)
S3-12	35	Seal, 7/16" shaft (2)
S3-19	35	Seal, internal (optional), 7/16" i.d. (2)
R1-1	36	Ring, seal retainer (2)
AL1-11-1	37	Throttle stop assy., 7/16" i.d.
NSS	38	Throttle stop lever, 7/16" i.d.
S2-15	39	Spring, stop screw
S1-21	40	Stop crew, 10-32 x 3/4"
S1-8	41	Pin screw, throttle stop
AL1-12-3	42	Throttle lever, long, with screw
L1-12-3	43	Throttle lever, long
S1-32	44	Screw, 1/4"-20 x 7/8" hex head
G1-44	45	Gasket, throttle body to flange
BT2-11	46	Flange, 1 1/4" 2B, with gasket
BT2-12	46	Flange, 1 1/2" 2B, with gasket
BT2-13	46	Flange, Holley 2B, with gasket
BT2-15	46	Flange, 1 1/2" GMC 2B, with gasket
S1-19	47	Screw, 12-24 x 5/8" SEMS (4)
G1-45	48	Gasket, 1 1/4" 2B Flange
G1-46	48	Gasket, 1 1/2" 2B Flange
G1-47	48	Gasket, Holley 2B Flange
G1-49	48	Gasket, 1 1/2" GMC 2B Flange

NSS = Not Serviced Separately

## Model VFF30 Series

325 HP LP Gas



Part #	Ref. #	Description
S1-59*	1	Screw, 8-32 Taptite (6)
C1-37	2	Cover, diaphragm (VFF30 only)
NSS*	3	Diaphragm assy., Silicone
NSS*	4	Screw, 8-32 x 1/4" (2)
F3-2	5	Fulcrum
NSS	6	Lever, valve operating
NSS	7	Body assy.
S1-5	8	Screw, 1/4"-20 x 5/8" SEMS (2)
S3-116*	9	Seal, lip pin
NSS*	10	Pin, valve operating
S2-40	11	Spring, valve
NSS*	12	Screen, filter backup
NSS*	13	Filter
NSS*	14	Filter assy. (includes filter & screen)
NSS*	15	Gasket, filter cover
C1-38	16	Cover, filter
NSS	17	Screw, 12-24 Taptite (10)
AF4-66	18	Fitting, ball check, assy. (not shown VFF30-2-4 only)
NSS*	19	Seal, VFF30
NSS*	20	Washer, seal retaining

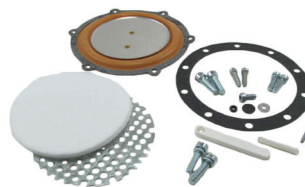
NSS = Not Service Separately

\*Repair Kit Components. Note extra screws (both slotted and torx) are included in the repair kit to replace any that maybe damaged.

NOTE: O-ring must be secured with washer when service is required. Washer is installed through LP-gas outlet and locked in slot by pin. Silicone grease will let pin slide easily. Be sure to properly lubricate "O" ring. Refer to Service Manual for further information.

## Model VFF30 Series

### Repair Kits



Part #	Description
RK-VFF30-2	Vacuum Fuellock-Filter Repair Kit

## A1 Series Adapters



300A and 175A Mixers to Gasoline Carburetor Air Horn

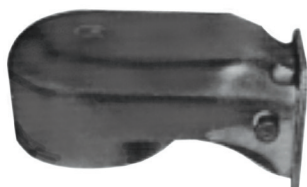
Part #	Description	Diameter	Height
<b>A1-3-1</b>	300A & 175A to 4 3/16" air horn	4-3/16"	1-1/4"
<b>A1-4</b>	300A & 175A to Chevrolet V8 1 1/4" duplex air horn	2-5/8"	1-1/4"
<b>A1-6</b>	300A & 175A to 1 1/4" duplex air horn	3-1/16"	1-7/16"
<b>A1-16-1</b>	300A & 175A to 5 1/8" air horn (Gann A9-20)	5-1/8"	3-3/8"
<b>A1-16-2</b>	300A & 175A to 5 1/8" air horn (Gann A9-21)	5-1/8"	2-7/8"
<b>A1-39</b>	300A & 175A to 2 5/8" air horn, high profile	2-5/8"	1-1/2"
<b>AA1-40</b>	300A & 175A to 2 5/8" air horn, w/clamp nuts, A1-38, N1-12 (3), S1-23 (3)	2-5/8"	1-1/2"
<b>A1-41</b>	300A & 175A to 2 5/16" air horn	2-5/16"	1-1/4"
<b>A1-50-2</b>	300A & 175A to 5 1/8" air horn offset; For GM & Chrysler requires spacer A2-73	5-1/8"	1-1/2"
<b>A9-22</b>	300A to gasoline carburetor with 5 1/8" air horn	5-1/8"	2-3/8"

## Adapter



Part #	Description
<b>AA1-64-3</b>	300A & 175A to 1982 and later Ford 5.0L throttle body EFI (Gann A9-26)

## Adapter



Part #	Description
<b>AA2-46</b>	Adapter assembly, 90 degrees, 5" to CA425M (low profile)

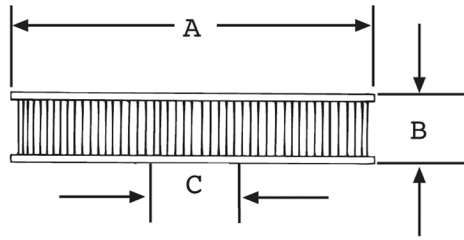
## Adapter



Part #	Description
<b>AA2-40-2</b>	Adapter assembly, 90 degrees, 5" CS to CA425M

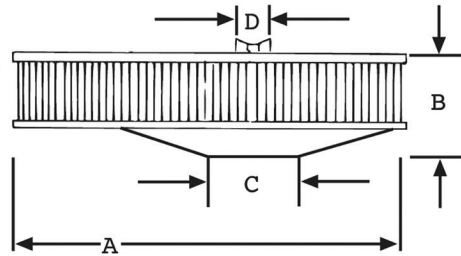
# Carburetion - Air Filter Assemblies

## AF1 Series



Part #	Air Flow	Applications	Filter Part #	Cover Part #	Base Part #	Stud Part #	Dimensions		
							A	B	C
AF-1-1	350 CFM	CA300A	F1-1	C1-4	*	—	9-7/8"	2-3/4"	7-1/2"
AF1-5	150 CFM	CA125	F1-5	C1-28	*	AS3-33	6-3/4"	2-3/8"	7-1/2"
AF1-11	500 CFM	CA300A	F1-9	C1-40	A2-26	—	14"	3-1/8"	7-1/2"
AF1-15	400 CFM	CA425	F1-15	C1-28	*	AS3-32	6-13/16"	6-5/8"	7-1/2"
F1-21	250 CFM	CA175A	F1-21	C1-73	*	—	8-1/16"	1-5/16"	7-1/2"

\* Filter assembly fits on mixer



Part #	Air Flow	Applications	Filter Part #	Cover Part #	Base Part #	Stud Part #	Dimensions		
							A	B	C
AF-14	500 CFM	CA125/CA425	F1-1	C1-48	A2-47	AS3-51	9"	7-1/2"	5-1/16"
AF1-16-2	550 CFM	CA425	F1-9	C1-60	A2-54	AS3-41	14"	4-3/16"	5-1/16"
AF1-17-2	550 CFM	CA225	F1-9	C1-60	A2-55	AS3-52	14"	4-3/16"	5-27/32"

## Vacuum Power Valve



Part #	Description
FCV-54700-001	Vacuum Power Valve

## Start Assist Valve

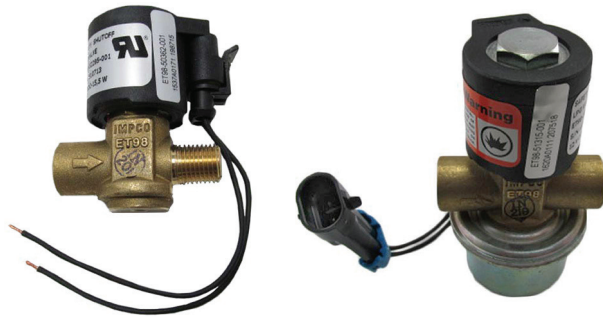


Part #	Description
SV	Start Assist Valve



## Model ET98

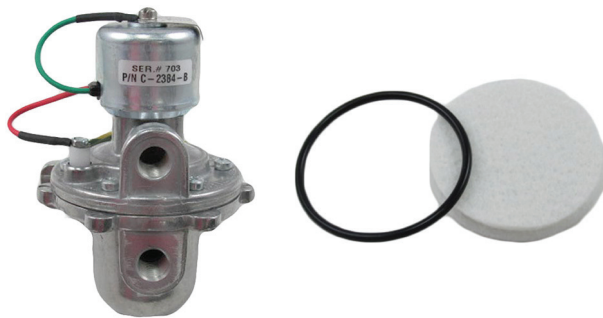
### Fuel Shutoff/Lockoff



The Model ET98 is an electrically operated safety shutoff valve suitable for high pressure up to 315 PSI for LPG liquid, LPG Vapor or Natural Gas Vapor. It is normally closed Straight-Through Lockoff, opened with 12V DC.

Part #	Description	Inlet x Outlet
ET98-50362-001	Safety shutoff valve	1/4" F.NPT x 1/4" M.NPT
ET98-51315-001	Safety shutoff valve with integrated filter.	1/4" F.NPT x 1/4" F.NPT

## Fuelock



Part #	Description
2384B	Filter fuelock for LPG 1/4" FNPT in/out, 12V. Chamois pack filter.
286-1794	Replacement filter kit for part # 2384B
FL206	Fuelock for gasoline. 1/8" FNPT in/out.
323-562	Replacement coil for part # 2543A, 12V
2341	Fuelock for LPG forklift application. 1/4" MNPT x 1/4" FNPT, 12V.
323-520	Replacement coil for part # 2341, 12V

## Fuelock

### Repair Kits



Part #	For Fuelock Part #	Description
310-6	2384B	Repair kit with plunger
323-526	2384B	Coil only, 12V
323-529	2384B	Coil & cover assembly, 12V
323-520	2341	Replacement coil & cover, 12V
323-562	2543A	Replacement coil & cover, 12V

## Universal Bulkhead Filter



Part #	Description
2655	Universal bulkhead - Filter for LPG. Two Openings for inlet side to accommodate hydro stat relief valve. 12V. Chamois pack filter.
286-1794	Replacement filter kit

## In-line Fuel Filter



Part #	Description
PF0532	Trapit Filter

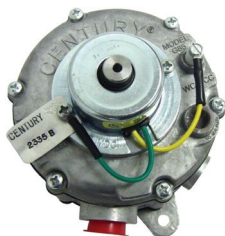


## Century Converters

Century offers a complete line of straight fuel carburetors for highway and industrial use. Call for additional information on your particular application. Additional literature is available.

Century offers a full range of converters to cover every application need. These converters can be used for either straight fuel or dual fuel installations. All units are available with solenoid primer.

### Model G-85



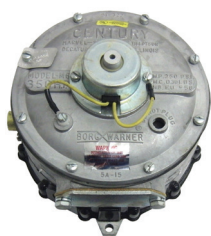
Part #	Description	Repair Kit
2335B	Applications up to 85 HP	286-1554

### Model G-85A



Part #	Description	Repair Kit
2380	Air heated converter for engines up to 85 HP	286-1554

### Model M-6



Part #	Description	Repair Kit
2504A	Large engine applications up to 350 HP	286-1688

### Model H



Part #	Description	Repair Kit
1477B	Small engine applications up to 135 HP	286-1301

## Century Converter Repair Kits



Part #	For Converter Model #
286-1301	H
286-1234	M4
286-1332	M5
286-1554	G-85
286-1688	M6

## Nylon Elbows



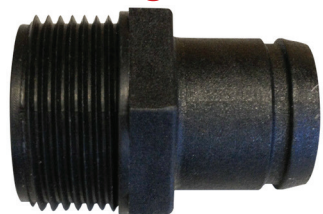
Part #	Hose - NPT
53EN	5/8" x 3/8"
54EN	5/8" x 1/2"
84EN	1" x 1/2"
86EN	1" x 3/4"
88EN	1" x 1"
1008EN	1-1/4" x 1"

## Nylon Crankcase Vent Fitting Assembly



Part #	Hose - NPT
54EN-12	5/8" x 1/2"

## Nylon Straight



Part #	Hose - NPT
53SN	5/8" x 3/8"
86SN	1" x 3/4"
88SN	1" x 1"

## Nylon Fuel Pump Plate



Gasket is included.

Part #	Hose - NPT
622N	1-3/4" bolt center

## Zinc Straight Hose Nipples



Zinc material, die-cast and machined.

Part #	Hose - NPT
86SZ*	1" x 3/4"
88SZ*	1" x 1"

\*Also available in nylon

## Zinc Hose Elbows



Die-cast, machined zinc material unless otherwise noted.

Part #	Hose - NPT
44EZ	1/2" x 1/2"
53EZ*	5/8" x 3/8"
54EZ*	5/8" x 1/2"
56EZ*	5/8" x 3/4"
84EZ*	1" x 1/2"
88EZ*	1" x 1"

\*Also available in nylon

## Crankcase Vent Fitting Assemblies



Illustrated is the Impco 300 Mixer with Gann 54EN-12 fitting to adapt crankcase ventilator hose. Includes 2 jam nuts and gasket. Zinc material unless otherwise noted.

Part #	Hose - NPT
54EN-12*	5/8" x 1/2"
64E-12	3/4" X 1/2"

\*Nylon

## Brass Hose Elbows

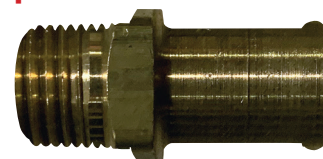


All brass fittings produced from extruded bar stock.

Part #	Hose - NPT
52EB	5/8" x 1/4"
53EB*	5/8" x 3/8"
54EB*	5/8" x 1/2"

\*Also available in nylon

## Brass Straight Hose Nipples

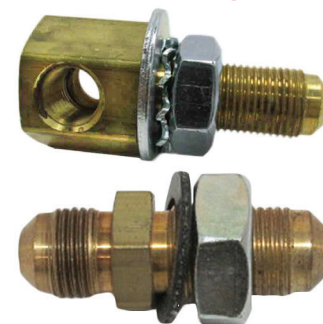


All brass fittings produced from extruded bar stock.

Part #	Hose - NPT
53SB*	5/8" x 3/8"
54SB*	5/8" x 1/2"

\*Also available in nylon

## Bulkhead Fittings



Part #	Description
T443	1/4" NPT 2 ways x 3/8" flare
T444	"T" 1/4" NPT 3 ways
STF-33	Straight bulkhead fitting 3/8" flare x 3/8" flare
PV-3866	Bulkhead tee with relief selpac

## Vapor Hose



Neoprene lined, oil and heat resistant, coil wire support permits free flow regardless of degree of bend. This is a non-porous vapor hose for LP gas and natural gas.

Part #	I.D.
CVH-058	5/8"
CVH-100	1"
CVH-114	1-1/4"

Note: CVH-100 in 25 ft. or 50 ft. coils.

## Water Heater Hose



Single braid of nylon reinforcement, oil and grease resistant.

Part #	I.D.
4230T-058	5/8"

## Vacuum Hose



Part #	I.D.
60-465	3/16"

## Vacuum Y



Part #	I.D.
60-3015	1/4" x 1/4" x 3/16"

## Stainless Steel Wire Braid Hose and Fittings



Developed for applications wherever a strong, corrosion resistant LP Gas hose is desired. The special low extract tube handles propane or butane in liquid and gas form.

**WARNING!!:** For LP and Natural Gas use only! Do not use in anhydrous ammonia or refrigeration applications! Do NOT use male swivel couplings or any type of couplings that use O-Ring sealing surfaces!

U.L. 21 Dayco. Series 7243 with Cloth Cover.

Part #	Size I.D.
SS25UL-4	3/16"
SS6-UL	5/16"
SS25UL-8	13/32"
SS25UL-10	1/2"

Use only with Parker series BN hose end fittings

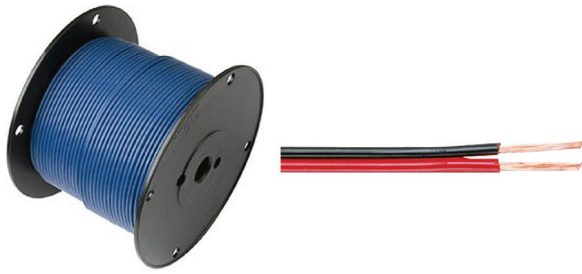
## Hose Ends for Parker Series 7243 Wire Braid Hose



Part #	Hose I.D.	Flare Size	Type	Use with Hose
6-FS-4	3/16"	1/4"	Straight	SS25UL-4
6-FS	5/16"	3/8"	Straight	SS6-UL
6-FS-90	5/16"	3/8"	90 Degree	SS6-UL
6-FS-45	5/16"	3/8"	45 Degree	SS6-UL
6-4MP	5/16"	1/4" M.NPT	Straight	SS6-UL
6-FS-8	13/32"	1/2"	Straight	SS25UL-8
6-FS-8-10	1/2"	1/2"	Straight	SS25UL-10
6-FS-10	1/2"	5/8"	Straight	SS25UL-10



## Plastic Primary Wire



Smooth finish thermoplastic insulation, stranded copper conductor. Provides good flexibility and color permanence. Impervious to oil, grease and diesel fumes.

Part #	Description
1160-BLUE	16 Gauge
826165	16/2 Parallel Wire, 16 Gauge
83165	16/3 Parallel Wire, 16 Gauge

## Boden Wire Control Cable



Part #	Description
C2-32	6' with Chrome "T" Handle (not shown)

## Control Brackets for Dash Mounting



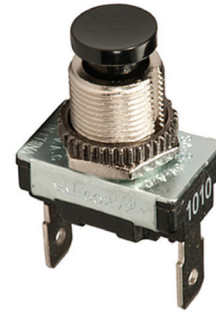
Part #	Description
144A	LP Gas/Gasoline Switch Bracket
244	For Boden Wire and Lockoff Switch, 2 Mounting Screws Included
344	Hold Diameter 3/8" x 1/2" x 1/2"

## Solderless Terminals



Part #	Description
44-5210	Ring Terminal
44-3200	Push-on Terminal Male Spade
44-6210	Spade or Fork Terminal

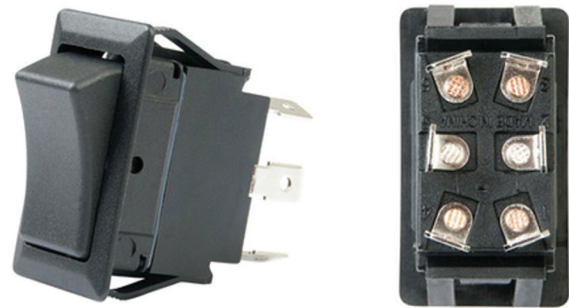
## Primer Switch



Heavy-duty, for either 6 or 12- volts. Has two binding head screw terminals. Mounting stem has 7/16-28 thread, is 3/8" long

Part #	Description
9279	Primer Switch

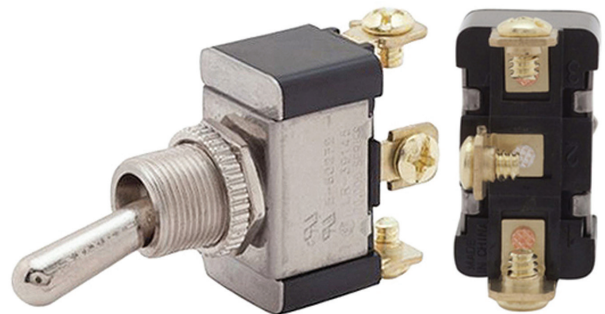
## Rocker Switch



3 positions, on-off-on, 6 terminals.

Part #	Description
5596-R	3 Positions, On-Off-On, 6 Terminals

## 3-Way Switches



Part #	Description
5586	3 Positions, On-Off-On, 3 Screw Terminals U.L. Approved for 15 amps at 125 VAC, 10 amps at 250 VAC
5592	3 Positions, On-Off-On, 6 Terminals for 2 Circuits
5592-1	3 Positions, On-Off-On, 6 Spade Terminals for 2 Circuits
82614	3 Positions, On-Off-On, 9 Terminals
014-4023	3 Positions, On-Off-On, 12 Terminals

## Benefits of Fresh Air

Horsepower is directly related to the temperature of the air introduced into the carburetor. For every 10° F of temperature increase above 60° F you will lose 1% of available horsepower. The opposite is also true.

Example:

A vehicle producing 100HP at 160°F intake air. Reducing the air temperature to 100°F by bringing in outside air will increase horsepower by 6%. The net increase would be 6HP.

## Fresh Air Canisters



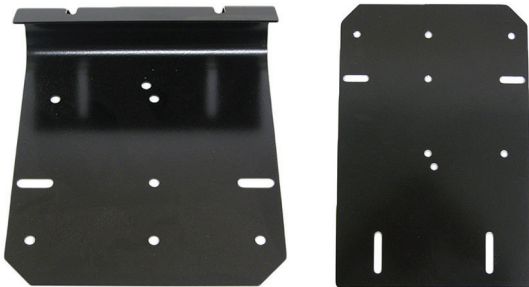
Part #	Description
AF9-2	IMPCO CA 300A

## Fresh Air Inlet Shroud



Part #	Description
S6-1	4" Shroud

## Converter Mounting Brackets



All brackets include mounting hardware.

Part #	Description
GB80	Mounts Century G85. Most Forklift Applications
GB86	Mounts Century G85 Converter on the Engine Carburetor Mounting Flange
GB87*	Accommodates: Beam 400, 120; Century M4, M5, H; IMPCO Model E. Slots are 1/4" x 1-1/2". Includes Strap Brace.
GB88*	For Farm Tractor, Industrial, Large Forklifts. Mounts: Beam 400, 120; Century M4, M5, H; IMPCO Model E. Includes Strap Brace.
GB88-SP	Similar to GB88 with Cut-out for alternator bracket mounting on Ford Pick-ups (Not Shown)
GB89	Eight-position bracket mounts IMPCO J-VFF-30 on GB87, GB88 brackets or separately.
GB95	Mounts IMPCO Model L on GB87 and GB88

\*Pivot point to permit upright position on fender shield.

## 4" Flexible Duct



Part #	Description
H5-1	4" x 48" Flexible Duct

## Remote Fill Receptacle and Accessories



Part #	Description
2700-R-BSS	Remote fill receptacle
7647SC	Double check filler valve 3/4" FNPT.
SS25UL-10	Wire braid hose 1/2" ID
SS25UL-4	Wire braid hose 3/16" ID
6-FS-10	Female hose swivel 5/8"
6-FS-4	Female hose swivel 1/4"
E1-4B	1/4" x 1/4" x Male elbow
E1-10D	5/8" x 1/2" x Male elbow
U1-10E	5/8" x 3/4" x Male half union
U1-4B	1/4" x 1/4" x Male half union
3165CP	Vent Valve 1/4" NPT w/warning plate
PL-631-54	1/4" MNPT x 1/4" x FNPT brass fitting with #54 orifice

Note: Actual components may vary depending upon tank model and vehicle application.

Please call the GEC sales department for assistance.

## Pressure Relief Valve



Pop-up relief vent assembly consists of nipple assembly, lock-nut, rubber gaskets, spring and hex nut. Easily installed on a flat surface of auto body above trunk.

Part #	Description
2995-P	Pop-up Relief Valve Assembly - Vertical