



Autogas/Cylinder Dispensing Equipment Catalog

06-16-2021

Visit our
Virtual Warehouse

Place Your Orders
24 hours a day, 365 days a year.



Virtual Warehouse Desktop View



Virtual Warehouse
Mobile View

**Optimized
for Mobile
Devices**

Don't have an account? Register online.



Click on **Order Online**

How To Register

To Register for Online Ordering Access:

Existing customers in good standing will go to www.gasequipment.com and click the "Order Online" tab at the top of the page. When the drop-down window appears, click on "Register". Complete the registration information and your registration will be processed. You will be notified by return email of your User ID and Password.

Once you receive your User ID and Password you then just need to go to www.gasequipment.com and click "Order Online" and login. Once into your account you can change your User ID and Password if you so desire.

GENERAL INFORMATION AND NOTICES REGARDING USE OF THIS CATALOG:

WHOLESALE ONLY. This catalog is for information purposes only and does not (i) constitute an offer by GEC, or any other party, to sell or otherwise provide any product contained in this catalog or (ii) grant any party the right to purchase from GEC, or any other party, any product contained in this catalog. Orders for products shall be placed with GEC in accordance with GEC's then current purchasing terms, conditions, policies and procedures. Placement of an order by any party shall not be binding on GEC until such order is accepted, in writing or by other verifiable means, by GEC. Any order, when so accepted, shall constitute a contract between GEC and the party placing such order, consisting of the terms of the formal acceptance issued by GEC and no other terms unless specifically approved, in writing, by GEC. GEC has no obligation to accept any order and silence on the part of GEC shall not be construed as acceptance or agreement on the part of GEC. Except as otherwise agreed in writing by the party against whom any such obligation is sought to be enforced, neither GEC nor any other party shall be obligated to (i) provide, disclose or otherwise make available any particular information, (ii) enter into, or participate in, any project, transaction or other relationship or (iii) execute any contract or other document or take, continue or forgo any action whatsoever.

Prices (like other information contained in this catalog) are subject to change by GEC, at any time and without notice. Prices for products do not include sales or use taxes. GEC sells products wholesale to the retail trade and each purchaser shall remit, directly to the proper authorities, all applicable taxes. In States requiring a resale license number, each purchaser shall furnish to GEC such purchaser's certificate number or other proof of license to buy without obligation to pay taxes.

Unless otherwise specified in the terms of formal acceptance issued by GEC in connection with an order, all products are sold ex works (as defined in Incoterms 2010). GEC reserves the right, at its discretion, to make products available for shipping from GEC's premises or the premises of the manufacturer thereof or other third parties.

Acceptance of orders is subject to credit approval by GEC. Until credit is established to GEC's satisfaction, payment by either credit card or cash-in-advance may be required. Alternatively, GEC may, at its discretion, require payment to be made at the time products are made available and collected for shipping to purchaser.

Terms of payment for established accounts are Cash In-Advance or Net 30 Days.

- Cash-In-Advance: electronic payments, checks or credit cards are accepted at time of purchase.
- Net 30 Days: electronic payments or checks are acceptable forms of payment. Credit cards can only be used at time of purchase.

Products will not be made available for shipment, on open account, to a customer whose account is past due.

Claims for shortage or overcharge must be made within ten (10) days of products being made available and collected for shipping to purchaser, and GEC's responsibility therefore ceases after expiration of such ten (10) day period.

Written permission must be obtained from GEC in order for a purchaser to return goods for credit and such return may be subject to a return handling charge. All returned products must be accompanied by the invoice number indicating date purchased and price paid.

All products are sold by GEC solely for resale or for commercial purposes. GEC makes no warranties to those defined as "Consumers" under the Magnuson-Moss Warranty – Federal Trade Commission Improvements Act. EXCEPT AS SPECIFICALLY STATED IN THE TERMS OF FORMAL ACCEPTANCE ISSUED BY GEC, GEC MAKES NO REPRESENTATIONS OR WARRANTIES, EXPRESS OR IMPLIED, REGARDING ANY MATTER, INCLUDING, WITHOUT LIMITATION, THE MERCHANTABILITY OR FITNESS FOR A PARTICULAR PURPOSE OF ANY PRODUCTS. Products contained in this catalog may be warranted to the final Consumer by their manufacturer and copies of such warranties are supplied with the applicable product by the applicable manufacturer or are available from the applicable manufacturer. As a convenience, GEC may obtain copies of such consumer warranties from applicable manufacturers and furnish them, free of charge and in connection with the purchase of applicable products, to purchasers from GEC who request them in writing. Address requests to **GEC Customer Service Dept.;** **P.O. Box 29242; Dallas, TX 75229.** Requests must include the GEC order number and the manufacturer's model number of each product for which a copy of the applicable consumer warranty is requested.

This catalog provides product options for consideration by potential purchasers of products from GEC. It is the responsibility of each purchaser to have its personnel (possessing sufficient technical skill, knowledge, training and expertise) thoroughly review and analyze the information set forth in this catalog (and other information as deemed necessary by such purchaser) in order to determine the appropriateness of all aspects of such purchaser's application, installation, usage, inspection and maintenance of products. Each such purchaser is solely responsible for making the final selection of any products to be purchased from GEC, and to ensure that application, installation, usage, inspection and maintenance of all products purchased shall be in compliance with all applicable specifications, instructions, manuals, performance, safety and warning requirements and provisions of NFPA #54, NFPA #58, DOT, ANSI and all applicable federal, state, local and foreign standards, codes, regulations and laws. Each such purchaser should seek further information in the event there are any doubts or questions.

Though GEC makes reasonable efforts to present accurate information in this catalog, GEC cannot guarantee that this catalog (or any other specifications, instructions, manuals or other information made available in connection with the products contained in this catalog) is completely free from error, omission or misstatement. In addition, product illustrations and descriptions are solely for identification purposes and actual products purchased from GEC will not necessarily conform to such illustrations or descriptions. TO THE FULLEST EXTENT ALLOWED BY APPLICABLE LAW, GEC DISCLAIMS ANY REPRESENTATIONS OR WARRANTIES, EXPRESS OR IMPLIED, REGARDING ANY MATTER RELATED TO THIS CATALOG OR INFORMATION CONTAINED IN THIS CATALOG (OR OTHERWISE MADE AVAILABLE IN CONNECTION WITH PRODUCTS), INCLUDING, WITHOUT LIMITATION, REPRESENTATIONS OR WARRANTIES OF MERCHANTABILITY OR FITNESS FOR ANY PARTICULAR PURPOSE. GEC shall not be responsible for any incorrect information and shall not be liable for any death, injury or damage, whether direct, indirect, incidental, or consequential, caused by the use of this catalog or such information. Information contained in this catalog (or otherwise made available in connection with products) is subject to change by GEC, at any time and without notice. Without limiting the foregoing, it is understood that GEC makes no representation or warranty, regarding truthfulness, accuracy or otherwise, with

respect to the content of any warranty, specifications, instructions, manuals or other information created, provided or otherwise made available by any manufacturer or other third party, and expressly disclaims any liability or responsibility for the content thereof. Each purchaser of products from GEC should consult with GEC regarding more detailed information and in order to determine any changes in information contained in this catalog (or otherwise made available in connection with products).

The graphic images, symbols and text contained in this catalog are either the proprietary property of GEC or are otherwise protected under applicable U.S. and international trademark and copyright laws. The trademarks and other proprietary content of this catalog may not be reproduced, displayed, distributed or transmitted in any form or by any means, electronically, mechanically, audio-visually or otherwise, without the express prior written consent of GEC.

IMPROPER SELECTION, APPLICATION, INSTALLATION, USAGE, INSPECTION OR MAINTENANCE OF THE PRODUCTS CONTAINED IN THIS CATALOG MAY RESULT IN DEATH, INJURY AND/OR DAMAGE. GEC'S SOLE RESPONSIBILITY WITH RESPECT TO ITS PRODUCTS IS SET FORTH IN THE TERMS OF FORMAL ACCEPTANCE ISSUED BY GEC IN CONNECTION WITH THE ORDER FOR SUCH PRODUCTS. Terms of formal acceptance currently issued by GEC in connection with orders for products contained in this catalog include the Acknowledgement Terms and Conditions, dated 9/01/2011 which are [set forth in this catalog] [are available at www.gasequipment.com]. As indicated above, such Acknowledgement Terms and Conditions are subject to change by GEC with respect to future orders.

No change or waiver with respect to the foregoing General Information and Notices shall be binding on GEC unless acknowledged in writing by an authorized officer of GEC.

This is a GENERAL PRODUCTS CATALOG. If you would like additional information regarding any product contained in this catalog, please contact GEC.

Contents

General Information and Notices	i-iv
Cylinder Dispensing Packages	1-2
Autogas Dispensing Packages	3
Delivery Hoses & Accessories	4-5
Tanks-to-Pump Installation Piping Kit	6
Dispenser Options & Accessories	7-8
Dispensing Cabinets	9
Skid Packages & Options	9
Electronic Dispensers & Options.....	10
Vertical Dispenser.....	11
Coatings/Paints.....	11
Pumps.....	12-16
Starter Packages.....	17
Starters, Switches & Disconnects.....	18
Compressor System.....	19
Fill Station Meter.....	19
Decals	20-24

Autogas/Cylinder Dispensing Product Offerings

GEC represents these and other companies



DISPENSER ORDERING STEP 1 OF 4

Select Your Cabinet Style with Blackmer & Corken Pump Options from the CYLINDER & AUTOGAS Package Offerings

All dispensers include pre-plumbed assembly connecting pump and meter on base with all valves and an explosion-proof on/off switch assembly. Standard configuration has outlet for cylinder filling (CFH) before the meter and motor fueling outlet (MFH) after the meter. All Dispenser Cabinets include a pull-away hose assembly & RegO A2141A6 pull-away valve.

No Cabinet Cylinder



Part #	Pump	Meter Included
DU1	Blackmer LGF1P	Yes
ED1	Blackmer LGF1P	No
DU12	Corken C12	Yes
ED12	Corken C12	No

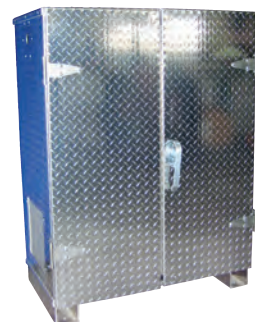
Single Door Aluminum Diamond Plate Cabinet Cylinder



Dimensions 50"H" x 40"H x 20"D
Shown with option: MFH Economy Installed

Part #	Pump
DCS50DP.B1	Blackmer LGF1P
DCS50DP.C12	Corken C12

Double Door Aluminum Diamond Plate Cabinet Cylinder



Dimensions 59"H" x 36"H x 20"D
Shown with options: MFH & CFH Installed

Part #	Pump
DCS48DP.B1	Blackmer LGF1P
DCS48DP.C12	Corken C12

3-Section Galvanized Cabinet

Cylinder

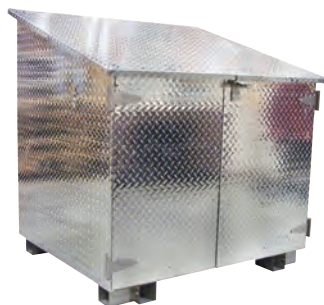


Dimensions 59"H" x 36"H x 20"D

Part #	Pump
DCS59GAL.B1	Blackmer LGF1P
DCS59GAL.C12	Corken C12

Large Aluminum Diamond Plate Cabinet

Cylinder



Dimensions 51"H" x 47.5"H x 39.5"D

Will hold scale.

Shown with options: MFH Standard & CFH Installed

Part #	Pump
DCL51DP.B1	Blackmer LGF1P
DCL51DP.C12	Corken C12

Walk-In Aluminum Diamond Plate Cabinet

Cylinder



Dimensions 75"H" x 48"H x 54"D

Will hold scale.

Shown with options: MFH Standard & CFH & 1124 Scale Installed

Part #	Pump
DCWI75DP.B1	Blackmer LGF1P
DCWI75DP.C12	Corken C12

No Cabinet Autogas

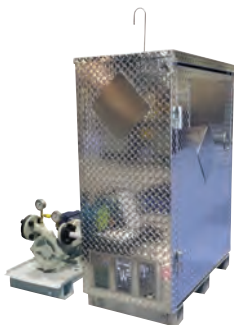
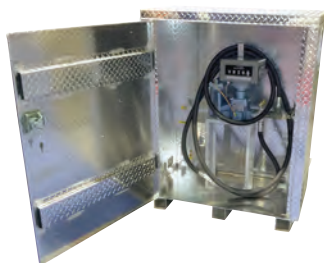


Includes the SBU.HD Unit per Pump/Motor Designation

Part #	Pump	Phase
MFDU.HD.LGL156.3PH	Blackmer LGL156	3
MFDU.HD.DLF075.3PH	Corken DLF075	3
MFDU.HD.LGL156.1PH	Blackmer LGL156	1
MFDU.HD.DLF075.1PH	Corken DLF075	1

Single Door Aluminum Diamond Plate Cabinet Autogas

Autogas



Includes the SBU.HD Unit per Pump/Motor Designation
Dimensions 50"H x 40"W x 20"D
Pump Slide Base Unit (SBU) adds 18" in Depth

Part #	Pump	Phase
DCS50DP.LGRLF114.1PH	Blackmer LGRLF 114	1
DCS50DP.LGL156.3PH	Blackmer LGL156	3
DCS50DP.DLF075.3PH	Corken DLF075	3
DCS50DP.LGL156.1PH	Blackmer LGL156	1
DCS50DP.DLF075.1PH	Corken DLF075	1

3-Section Galvanized Cabinet Autogas

Autogas

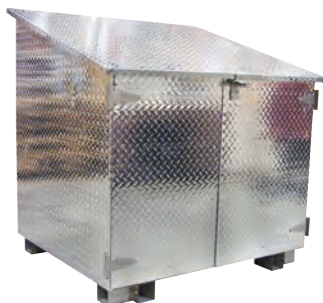


Includes the SBU.HD Unit per Pump/Motor Designation
Dimensions 59"H x 36"W x 20"D
Pump Slide Base Unit (SBU) adds 18" in Depth
(Graphics are not included.)

Part #	Pump	Phase
DCS59GAL.LGL156.3PH	Blackmer LGL156	3
DCS59GAL.DLF075.3PH	Corken DLF075	3
DCS59GAL.LGL156.3PH	Blackmer LGL156	1
DCS59GAL.DLF075.3PH	Corken DLF075	1

Large Aluminum Diamond Plate Cabinet Autogas

Autogas



Dimensions 51"H x 47.5"W x 39.5"D
Will hold Scale.

Part #	Pump	Phase
DCL51DP.HDPDL16.VFD	Corken DL16	3 with VFD
DCL51DP.HDPDL16.3PH	Corken DL16	3
DCL51DP.RC20.3PH	Blackmer RC20	3
DCL51DP.LGL156.3PH	Blackmer LGL156	3
DCL51DP.DLF075.3PH	Corken DLF075	3
DCL51DP.RC20.1PH	Blackmer RC20	1
DCL51DP.HDPDL16.1PH	Corken DL16	1
DCL51DP.LGL156.1PH	Blackmer LGL156	1
DCL51DP.DLF075.1PH	Corken DLF075	1

DISPENSER ORDERING STEP 2 OF 4

Select Your Delivery Hose Assembly(s)

If you want both the CFH & MFH metered, be sure to select the optional 3-Way valve (DU-3Way) for the CFH & MFH to be configured downstream of the meter to comply with weights and measures regulations. Otherwise the CFH is installed upstream of the meter.

Delivery Hose Options

For Autogas and Cylinder Dispensing Units



Part #	Description
CFH-STANDARD	1/2" Parker Motor Fuel Hose Assembly 6' long with RegO 7901TB Quick Acting Valve & 7193D-10 Fill Connector
CFH-LONG	1/2" Parker Motor Fuel Hose Assembly 10' long with RegO 7901TB Quick Acting Valve & 7193D-10 Fill Connector
MFH-STANDARD	3/4" Parker Motor Fuel Hose Assembly with RegO A7793A nozzle - 15' Hose
MFH-ECONOMY	3/4" Parker Motor Fuel Hose Assembly with RegO 7554LV Quick-Acting Valve - 15' Hose
MFH-GASGUARD	3/4" Parker Motor Fuel Hose Assembly with Gasguard Nozzle - 15' Hose
MFH-EURO	3/4" Parker Motor Fuel Hose Assembly with ZVG2 Euro Nozzle - 15' Hose
DU-3WAY	Option 3-Way Valve for CFH & MFH to be configured downstream of meter.

Delivery Hose Accessories

Hose Retractor and Holsters For Autogas and Cylinder Dispensing Units



6102-1078P



GasGuard Holster-Mod
Nozzle Not Included

Part #	Description
6102-1078P	Pomeco 102 Spring Balance Hose Retractor
PB-1396	Hose Clamp for use with 6102-1078P Hose Retractor
GasGuard Holster-Mod	Lockable Holster for use with GasGuard GG20 & ZVG2 Nozzles

Options For Delivery Hoses

Adapters For Autogas and Cylinder Dispensing Units



16.0320



16.0331



66.1327



16.0363



68.0065

Part #	Description
16.0320	Female EURO to Male ACME Connection Adapter
16.0331	Female ACME to Male EURO Adapter
66.1327	EURO Style Filler Valve For Forklift Cylinders
16.0363	Snapfill Adapter 1-3/4" ACME for Bobtails
68.0065	EURO Remote Filler Valve with Enclosure

Options For Delivery Hoses

Replacement Nozzles For Autogas and Cylinder Dispensing Units



ZVG2



ZVG2-T



GG20HSL



NOZZLE NOT INCLUDED

GG-Splashguard

Part #	Description
ZVG2	Euro low emission UL listed nozzle 3/4" NPT with latch
ZVG2-T	Euro low emission UL listed nozzle 3/4" NPT with latch and nozzle talker
EA866E	Orange scuff guard with nozzle talker for ZVG2
GG20HSL	Low emission nozzle 3/4" NPT with strainer and latch assembly
GG-SPLASHGUARD	Splashguard for GG20HSL

Dispenser Ordering Step 3 of 4

Select Your Tank-To-Pump Installation Piping Kit(s)

Tank to Pump Piping Kit Options

For Autogas and Cylinder Dispensing Units



Part #	Kit Includes
T2P-1	1-1/4" Internal Valve & Piping with 1" Pump Connection & Strainer
T2P-114	1-1/4" Internal Valve & Piping with 1-1/4" Pump Connection & Strainer
T2P-112	1-1/4" Internal Valve & Piping with 1-1/2" Pump Connection & Strainer
T2P-114X112	1-1/4" Internal Valve & 1-1/2" Piping with 1-1/2" Pump Connection & Strainer
T2P-114X200	1-1/4" Internal Valve & 2" Piping with 2" Pump Connection & Strainer

Remote Shutoff Options

For Autogas and Cylinder Dispensing Units



PK

Duress Kit

Part #	Description
PK	Pneumatic Remote Shutoff Kit
DURESS KIT	Cable Remote Shutoff Sign Kit

DISPENSER ORDERING STEP 4 OF 4

Select Your Options & Accessories

Dispensing Unit Purge Kit

For Autogas and Cylinder Dispensing Units



Part #	Description
DUPK	Cylinder vapor purging kit with purge exhaust pipe and tank regulator/fittings

Fuel Filtration

For Autogas Dispensing Units Only



Part #	Description
FST-634	Blue Moon Filter 1" Ports
FST-63	Blue Moon Disposable Filter 1" Ports
FST-124	Blue Moon Filter Vessel 2" Ports with Replaceable Filter Cartridge (RF-4)
RF-4	Blue Moon Replaceable Filter Cartridge for FST-124

Pre-Installed Conduit Kits

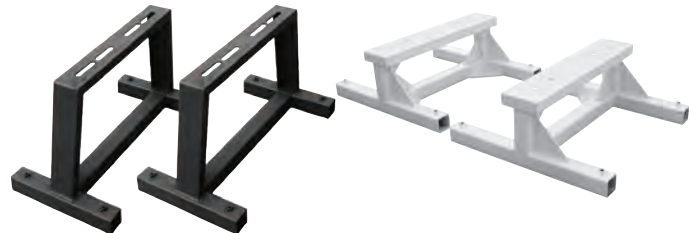
For Autogas and Cylinder Dispensing Units



Part #	Description
ECK-SM CABINET	Electrical Conduit Kit
ECK-LG CABINET	Electrical Conduit Kit

Tank Legs, Skids & Mounting Plates

For Autogas and Cylinder Dispensing Units



TL-36

TL-2KA

Part #	Description
TL36	Tank Leg Stands for use with 500 & 1,000 WG tanks only
TL-2KA	Tank Leg Stands for use with 2,000 WG tanks only
TS500DH37.5-SKID	Autogas Dispenser Skid for use with 500 WG tanks only
TS1000DH41-SKID	Autogas Dispenser Skid for use with 1,000 WG tanks only
GEC MINISKID 36	Gas Equipment Autogas Dispenser Skid
GEC MINISKID 36 MTG. PLATE	Gas Equipment Autogas Dispenser Skid with Mounting Plate

Beam Scales

Portable Beam Scales for Cylinder filling operations. The Fairbanks Portable Beam Scale is constructed to meet all requirements of Handbook 44, issued by the National Institute of Standards & Technology.



Part #	Description	Beam	Dimensions	Capacity	Weight
1124	Portable Platform Scale	Single	Platform: 17-3/4" x 23-1/2" Base: 21" x 36" Overall Height: 43"	1,000 lbs.	165 lbs.

ParaSCALE Lite

Electronic Autostop Cylinder Filling Kit for Mechanical Scale

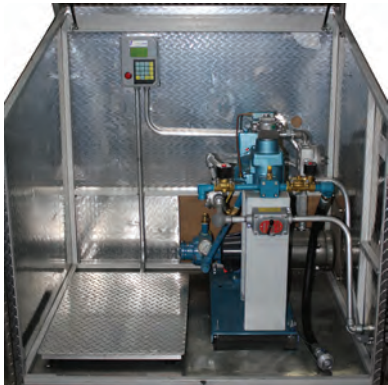


Parafour brings a new level of safety assurance to cylinder filling, whether a single scale station or multiple manual filling points. With positive flow stop when full, you can take comfort in knowing that you will never have an over-fill situation again. OPD's fail, not everyone uses a bleeder. Fill station operator oversight is not always perfect. So whether a single dispenser scale at your gas office, multiple scales on a filling dock, or even at your re-sellers location, the ParaSCALE Lite-SL will let you fill with confidence. Installation takes about 30 minutes. Does not affect scale operation. It mounts to standard Fairbanks filling scales (more applications coming).

Part #	Description
ParaSCALE-Lite	Includes ParaSCALE Micro Controller with associated conduit, junction box and proximity switch
ParaSCALE-Lite-S	Includes ParaSCALE Micro Controller with associated conduit, junction box, proximity switch and 1/2" solenoid.
ParaSCALE-Lite-SL	Includes ParaSCALE Micro Controller with associated conduit, junction box, proximity switch, 1/2" solenoid and stop indicator light.

ParaSCALE

Automatic Cylinder Filling Safety System



If integrated with the P4-050-2 Electronic register, the Parascale can also facilitate options such as:

- Automatic Temperature Compensation
- Receipt Printer
- Flow control with both cylinder and Auto-gas/RV/Forklift solenoids
- POS and Fuel Management connectivity including ParaFUEL and ParaFLEET
- Remote Sales Display
- Functional with both PD and Mass Flow Meters

The ParaSCALE system is the most advanced means of safely controlling cylinder filling to prevent overfilling, while ensuring the customer receives a complete fill. Available as a stand alone unit to connect to any electronic load-cell scale base, as a package with the scale base with or without flow control solenoid, or fully integrated into the P4-050 Electronic scale, offering ALL of the options, capabilities, communications and convenience of a Parafour Autogas dispenser, in a UL495 Listed, NTEP certified package, the ParaSCALE system is in a class by itself. It may be installed in a typical dispensing cabinet, with remote power supply, or externally on a pedestal.

Part #	Description
P4-ParaSCALE	Basic system includes controller, power supply, scale base, and 12' harness.

Dispensing Cabinets Only



Part #	Description
DCAB-D1A-MOD	50-3/4"H x 40"W x 20"D, Aluminum Diamond Plate, Single Door. Will not hold scale
DCAB-A48	48"H x 36"W x 20"D, Aluminum Diamond Plate, Double Door. Will not hold scale
DCAB-GALV ALUM BASE ASSY	59"H x 36"W x 20"D Galvanized Vertical 3 Level Cabinet with Aluminum Base Assembly. Will not hold scale.
DCAB-ADP1	51"H x 47.5"W x 39.5"D, Aluminum Diamond Plate with Steel Tube Frame & Aluminum Base. Will hold 1124 beam scale.
DD-WALK IN CABINET	75"H x 48"W x 48"D, Aluminum Diamond Plate. Will hold 1124 beam scale.

Dispensing System with Skid Total Package With or Without Tank



Package consists of 51" Diamond Plate Cabinet, Pump, All Plumbing for Pump/Bypass/Vapor/Purge/Electrical. Also includes Cable Actuation and Skid Assembly with or without Tank.

Options include 1124 Fairbanks Scale, Cylinder Filling and Motor Fuel Hose Assemblies

Part #	Pump	Size	With Tank
PDS-51DP-B1-1000	Blackmer LGF1P	Domestic Trinity 1,000 WG-AG tank	Yes
PDS-51DP-B1-1000-LT	Blackmer LGF1P	Domestic Trinity 1,000 WG-AG tank	No
PDS-51DP-B1-500	Blackmer LGF1P	Domestic Trinity 500 WG-AG tank	Yes
PDS-51DP-C12-1000	Corken C12	Domestic Trinity 1,000 WG-AG tank	Yes
PDS-51DP-C12-1000-LT	Corken C12	Domestic Trinity 1,000 WG-AG tank	No
PDS-51DP-C12-500	Corken C12	Domestic Trinity 500 WG-AG tank	Yes
PDS-51DP-C12-500-LT	Corken C12	Domestic Trinity 500 WG-AG tank	No

Skid Package Options



Part #	Description	Application
MFH-STANDARD	3/4" Parker Motor Fuel Hose Assembly 18' long with RegO A7793A nozzle	Autogas
CFH-STANDARD	1/2" Parker Fuel Hose Assembly 6' long with RegO 7901TB Quick Acting Valve & 7193D-10 Fill Connector	Cylinder
1124	Portable Platform Scale	N/A

Autogas Electronic Dispenser & Accessories

Parafour Electronic Dispensers

Includes ATC and FMS Interface. Order Hose Kit with Nozzle separately in Options Section.



Part #	Description	UL Listed
P4-100	Single Hose Dispenser, Single Meter, 1 Autogas Hose Connection	No
P4-100-L	Single Hose Dispenser, Single Meter, 1 Autogas Hose Connection	Yes
P4-150	Two Hose Dispenser, Single Meter, 1 Autogas Hose Connection, 1 Cylinder Hose Connection	No
P4-150-L	Two Hose Dispenser, Single Meter, 1 Autogas Hose Connection, 1 Cylinder Hose Connection	Yes
P4-200	Dual Hose Dispenser, 2 Autogas Hose Connections, Island Orientation	No
P4-200-L	Dual Hose Dispenser, 2 Autogas Hose Connections, Island Orientation	Yes

Parafour Electronic Dispenser Options

Options



GEC Autogas Hose Kit



HK-0003



HK-0004



Receipt Printer

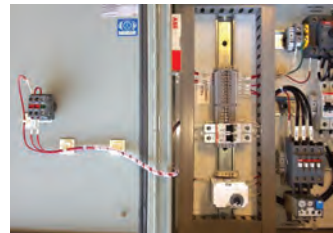
Part #	Description
GEC Autogas Hose Kit	15' Hose, GG20 Nozzle, 3' Whip-Hose with Pullaway
HK-0003	P4 Knock Over Protection (requires elevated frame)
HK-0004	Hose Retractor Kit - Vertical
LC Meter Option	Liquid Controls MA4 Meter with Pod-5 Pulsar
Receipt Printer	Printer Option, 2-1/4" Thermal roll, Dispenser specific design for use in outdoor applications

Fuel Management



Part #	Description
P4-PV100	PetroVend PV100 Fuel Control System (pedestal extra)
P4-K800 Hybrid	PetroVend K800 Hybrid FMA (requires setup by OPW)
P4-ParaFUEL	Integrated Fuel Management System

Electrical Control Panels (ECP)



Part #	Description
P4-SECP-1P	Economy Station Electrical Control panel, Single phase, for 3-5 HP motors.
P4-SECP-3P	Economy Station Electrical Control panel, 3 Phase, for 5-7.5 HP motors.
P4-SFCP-3P	Full Size Station Electrical Control panel, 3 phase, for 5-10 HP motors.
P4-SVFCP-1P	VFD Electrical Control panel, Single phase, for 5-7.5HP motors.

Vertical Dispensing Package



Vertical Tank Package includes:

- Tank, LP dispenser, X-frame for mounting tank, crash post and railing, valves & fittings.
- Motor fuel dispensing unit DU1VB (Blackmer) or DU1VC (Corken)
- Tank to pump piping kit
- Bypass piping kit
- Vapor return piping kit
- Cable kit
- Motor fuel hose assembly & cylinder fill hose assembly

Other Equipment Options

- 4 Tanks sizes - 660, 1150, 1600, 1999
- Fairbanks Scale

Features

- Only 10 foot diameter circle required for tank
- Highly visible package unit requires less installation time
- Other configurations available.

Contego Intumescent Latex (thin film) Passive Fire Barrier Paint



Contego Passive Fire Barrier is a heavy-bodied, single-part latex fire-proofing paint material. It is a water based product with no volatile organic compounds, is not classified as a hazardous material, and will clean up with soap and water. It is an alternative solution to Carboline Pyrocrete cementitious material that can be used to fire-proof and provide a 2-hour fire protection rating (with sufficient coats) on LPG installations (re: vertical tank legs).

Features:

- Water based paint with no VOC's.
- Is not classified as a hazardous material.
- Will clean up with soap and water.
- Is an optional solution to Carboline's Pyrocrete for fire-proofing.
- Can provide a 2-hour fire protection rating on LPG installations (re: vertical tank legs) with sufficient coats.
- Available in 1 or 5 gallon containers.

Part #	Description
PFB-001W	1 Gallon Bucket
PFB-005W	5 Gallon Pail

Method:

When activated by heat or flame, a dense carbon char is formed separating and shielding the substrate from heat while off gassing displaces oxygen from the treated surface; thus eliminating two of the three components needed for combustion.

Sumter Coatings



Specialty coatings for protecting propane tanks and related equipment.

Part #	Description	Size
880N2209	Foot Ring Protector Black Primer	1 Gallon Bucket
880W2201	No. 7 Silicone Alkyd Enamel White Finish Coat	1 Gallon Bucket
880W2201-5GAL	No. 7 Silicone Alkyd Enamel White Finish Coat	5 Gallon Pail
880W2203	No. 5 Tank Enamel White Finish Coat	1 Gallon Bucket
888S2006	SC2110 Strontium Chromate Aluminum Finish Coat	1 Gallon Bucket

Stationary Bottle Pumps

Cylinder Filling Pump



These 1" motor speed pumps have long been popular for cylinder filling, small volume motor fueling & supplying small vaporizers. They offer the same heavy-duty construction of larger Blackmer models. Available in two mounting styles & capacity ranges.



C-Face Mounting — Direct Motor Drive

Pumps in the LGF Series mount directly to standard C-Face, 1750 rpm motors with flexible coupling. LGF1 pumps use a 1 hp motor as standard and LGF1P pumps use a 1-1/2 hp motor as standard. Standard motors for these pumps are single-phase, 115/230 volt, right-hand rotation, explosion-proof construction, with automatic reset thermal overload protection. U.L. listed & suitable for continuous duty. An explosion-proof manual switch is also available for mounting either at the motor or at a remote location.

Base Mounting — Direct Motor Drive

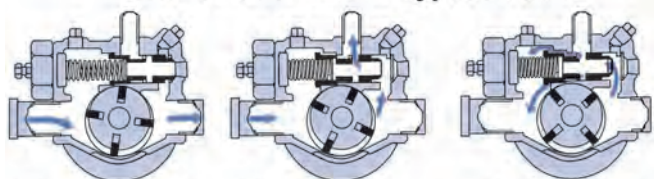
LGB1 Series pumps have brackets for foot-mounting to a conventional baseplate. The mounted pump is furnished with a flexible shaft coupling for connection to a standard motor. These units are designated as LGB1-DM or LGB1P-DM. Motors for these units are shipped to customer specifications. Coupling guard included.

Part #	Description	Factory Relief Valve Setting	Pump & Motor Speed	Approx. Delivery of Propane @ Diff. Pressures & Pump Speeds		Motor Size (HP)	Normal Time to Fill LP Gas Cylinders (Min.)		Max. Diff. Pressure in PSI for Continuous Duty Rated @	Shaft Size
				50 PSI Diff.	100 PSI Diff.		20 lb.	100 lb.		
LGF1E	1" Flange Mounted C-Face Style	105 PSI	1,750 RPM	8	6	1	3/4	3	105	11/16
LGF1PE		120 PSI	1,750 RPM	13	10	1.5	1/2	2	120	11/16
LGB1E	1" Bracket Mounted DM Style	105 PSI	1,750 RPM	8	6	1	3/4	3	105	11/16
LGB1PE		120 PSI	1,750 RPM	13	10	1.5	1/2	2	120	11/16

Built-in Combination Valve Eliminates Cost of Separate Bypass Valves

Built into the LGF1 & LGB1 Series pump is a patented "combination" valve acting as a back-to-tank bypass valve & as an internal relief valve. This feature lowers installation costs by eliminating the need for a separate bypass valve. It also assures pressure relief if the back-to-tank bypass line is closed. The valve's unique three-stage operation is illustrated to the right.

Combination Relief/Bypass Valve



Normal Operations
Valve completely closed during normal operation with discharge line open.

Back-to-Tank Bypassing
Discharge pressure exceeding the valve setting opens valve to second stage, returning all or part of flow back to supply tank.

Pressure Relief
If back-to-tank line is closed, valve opens to third stage, passing flow back to inlet side of pump.

Ebsray RC Series Autogas Pump

High Differential Pressure Regenerative Turbine Pump for Liquefied Gas Applications



The Ebsray RC Series Regenerative Turbine Pumps are single-stage regenerative turbine pumps designed and precision built for high-pressure transfer of LPG, and Autogas.

Part #	Inlet	Outlet	Pump Speed	Approx. Delivery in GPM		Motor Size	Max. Diff. Pressure PSI
				110 PSI Diff	160 PSI Diff		
RC20	1" FNPT	1" FNPT	3500	13	10	3 HP	200
RC25	1" FNPT	1" FNPT	3500	23	19	5 HP	200
RC40	1-1/2" FNPT and ANSI Flange	1" FNPT and ANSI Flange	3500	45	39	5 HP / 7.5 HP	200

Multi-Cylinder & Motor Fuel Filling Pumps



These motor-speed pumps offer higher capacities than the LGF1/B1 Series pumps. They are suited to a variety of small transfer jobs, but are especially popular for multi-station cylinder-filling systems. They are equipped with a built-in relief valve and are fitted for both LP Gas or anhydrous ammonia service. These pumps are designed for foot-mounting. All of the pumps are equipped with replaceable cylinder liners and end discs, permitting rebuilding of the pump to like new condition.

C-Face Mounting - Direct Motor Drive

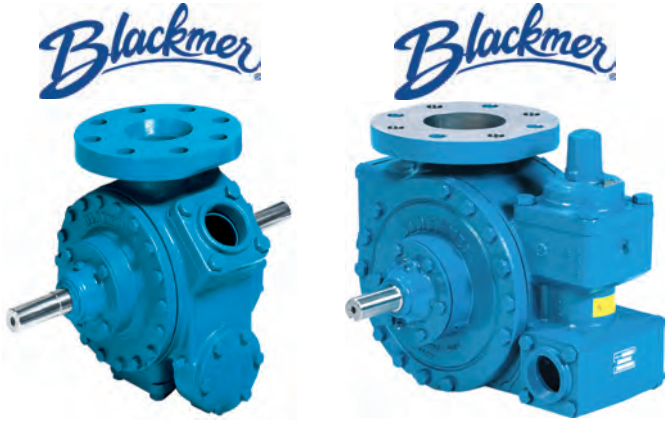
This drive is available for the LGLF1-1/4 & LGLF1-1/2 Series pumps. The pump is mounted to a steel baseplate and furnished with a flexible shaft coupling for connection to a standard motor. A coupling guard is included.

Base Mounting - Direct Motor Drive

This drive is available for the LGL1-1/4 & LGL1-1/2 Series pumps. The pump is mounted to a steel baseplate and furnished with a flexible shaft coupling for connection to a standard motor. A coupling guard is included.

Part #	Description	Pump & Motor Speed (RPM)	Approx. Delivery In GPM Propane		Motor Size (HP)	Max. Diff. Pressure in PSI	Max. Motor Size to Mount On Standard Base	Shaft Size
			50 PSI Diff.	100 PSI Diff.				
LGLF11/4A	1-1/4" Flange Mount for C-Face Motor	1750	21	18	2	150	215T	7/8
LGL11/4	1-1/4" Foot Mount	1750	21	18	2	150	215T	7/8
LGLF11/2A	1-1/2" Flange Mount for C-Face Motor	1750	33	29	3	150	215T	7/8
LGL11/2	1-1/2" Foot Mount	1750	33	20	3	150	215T	7/8

Blackmer Flange Mounted Pumps for Transports and Bobtails



An auxiliary intake port next to the mounting flange can be used for emergency unloading of another tank or transport. Rated for differential Pressures to 125 psi, the pump has twin discharge ports which permit the use of two hoses, if necessary to reduce pressure loss when unloading into restrictive receiving systems.

For Bobtail Service

The TLGLF3 pump series flange mounts directly to the truck tank in combination with a flanged internal control valve. Because it eliminates the intake line and related restrictions to flow, it also eliminates the vaporization problem caused by them. That means longer pump life and higher effective pump capacity. The pump is rated to 125 psi differential.

For Transport Service

The TLGLF4 series transport pump is designed to mount to 4" internal valves. It is suitable for both LP Gas and Anhydrous Ammonia service. Ideal intake conditions assure maximum pumping rates and the shortest possible transport turnaround time.

The TLGLF3 pump is suitable for both LP Gas and Anhydrous Ammonia. A double shaft extension is standard, making the pump suitable for either right or left-hand PTO rotation. The pumps is equipped with replaceable cylinder liners and end discs, permitting rebuilding of the pump to like-new conditions.

Part #	Description	Suction Flange	Discharge Flange	Pump Speed (RPM)	Maximum Working Pressure (PSI)	Maximum Differential Pressure
TLGLF3C	Flange Mounted	3" 300# ANSI	2" NPT	650	350	150 PSID
TLGLFD4B	Flange Mounted	4" 300# ANSI	2" NPT	650	350	150 PSID

Bypass Valves



Part #	Common Applications	Used with Blackmer Pump Model	Ports	Max. Rated Flow* - GPM @			
				20 PSI	50 PSI	80 PSI	120 PSI
BV-034	Cylinder Filling Systems	1-1/4" or 1-1/2" Either Valve	3/4" NPT Tapped	25	40	50	60
BV-100	Cylinder Filling Systems	1-1/4" or 1-1/2" Either Valve	1" NPT Tapped	25	40	50	60
BV-114	Bobtail Trucks or Smaller Bulk Plant Systems	2" or 3" Either Valve	1-1/4" NPT Tapped	60	80	100	125
BV-112	Bobtail Trucks or Smaller Bulk Plant Systems	2" or 3" Either Valve	1-1/2" NPT Tapped	60	80	100	125
BV-200	Transports or Large Bulk Plant Systems	3" and 4"	2" NPT Companion Flanges	150	180	220	250

* Normal maximum bypass flow rates without significantly exceeding the set pressure limit.

Ebsray RV18 Bypass Valve



Part #	Flow Rate	Differential Pressure	Hydrostatic Test Pressure
RV18	52	203	155

By-Pass Valves

CORKEN



Part #	Description	Common Applications	Ports	Flow Rate GPM	O-ring Material Options
B166-12	Automatic Dual-Purpose By-pass Valve	Cylinder Filling	3/4" NPT	Up to 30	Buna-N (std), Neoprene®, PTFE, Viton®, Ethylene-Propylene
B166-16	Automatic Dual-Purpose By-pass Valve	Cylinder Filling	1" NPT	Up to 40	Buna-N (std), Neoprene®, PTFE, Viton®, Ethylene-Propylene
B166-1BAU	Automatic Dual-Purpose By-pass Valve	Autogas Filling	3/4" NPT	Up to 30	Buna-N (std), Neoprene®, PTFE, Viton®, Ethylene-Propylene
B166-1CAU	Automatic Dual-Purpose By-pass Valve	Autogas Filling	1" NPT	Up to 40	Buna-N (std), Neoprene®, PTFE, Viton®, Ethylene-Propylene
T166-20	Pump Flow Control Valve	Bobtail Truck & Smaller Bulk Plant Systems	1-1/4" NPT	Up to 80	Buna-N (std), Neoprene®, PTFE, Viton®, Ethylene-Propylene
T166-24	Pump Flow Control Valve	Bobtail Truck & Smaller Bulk Plant Systems	1-1/2" NPT	Up to 100	Buna-N (std), Neoprene®, PTFE, Viton®, Ethylene-Propylene
ZV200	Differential By-pass Valve	Transports or Large Bulk Plant Systems	2" NPT	Up to 250	Buna-N (std), Neoprene®, PTFE, Viton®, Ethylene-Propylene

Note: By-Pass valves are NOT preset. Refer to Corken's installation instruction manual for proper setting procedures.

Cylinder Filling & Motor Fuel Dispensing Pumps

CORKEN



The close-coupled design of a C-model turbine pump makes installation easy and eliminates alignment issues. Ideal for dispensing applications like propane cylinder filling stations and dispensers. Five models available with NPT connections only.

Part #	Motor Only*	Motor Specs				Capacity in GPM			Max. Diff.	Connections	
		HP	Voltage	Phase	RPM	20 PSID	50 PSID	75 PSID		Inlet	Outlet
C10KD6A	4261-1	1	208-230	1	3450	12	6.5	2.5	75	1-1/4"	1"
C12KD6A	4261-1	1	208-230	1	3450	19	15	11	100	1-1/2"	1"
C12FD6A	4261	2	115/208-230	1	3450	19	15	11	100	1-1/2"	1"
C13FD6A	4261	2	115/208-230	1	3450	26	21	17	125	1-1/2"	1"
C14MD6A	2557	3	115/208-230	1	3450	38	32	25	125	1-1/2"	1"
C14GD6A	2557	3	230/460	3	3450	38	32	25	125	1-1/2"	1"
C16MF6A	4885	3	115/208-230	1	3450	13	11	10	150	1-1/4"	1"
C16GD6A	2557	3	230/460	3	3450	13	11	10	150	1-1/4"	1"

Note: See page 17 for motor and wall mounted start switches.

* When ordering motors only, switch box & switch are ordered separately.

Autogas Pumps **CORKEN**



The frame mount design requires a baseplate, coupling, and coupling guard and utilizes a direct drive configuration so the pump runs at motor speed. With a frame mount design, the user has the flexibility to choose from a variety of motor sizes. FF- & DLF-models 075, and 150 produce higher differential pressures than F-Model pumps and are commonly used in Autogas applications.

Part #	GPM	HP	Inlet	Outlet	RPM	Max. Working Pressure	Max Diff. Pressure	Mounting
FF075	22.5	7.5	1.5" ANSI 300# Raised Face Flange	1" ANSI 300# Raised Face Flange	3,450 @ 60 Hz or 2,880 @ 50 HZ	400 PSI	150 PSI	Rigid Base
DLF075	22.5	7.5	1.5" ANSI 300# Raised Face Flange	1" ANSI 300# Raised Face Flange	3,450 @ 60 Hz or 2,880 @ 50 HZ	400 PSI	150 PSI	C-Face
FF150	33.79	10	1.5" ANSI 300# Raised Face Flange	1" ANSI 300# Raised Face Flange	3,450 @ 60 Hz or 2,880 @ 50 HZ	400 PSI	250 PSI	Rigid Base
DLF150	33.79	10	1.5" ANSI 300# Raised Face Flange	1" ANSI 300# R aised Face Flange	3,450 @ 60 Hz or 2,880 @ 50 HZ	400 PSI	250 PSI	C-Face

Part #	Motor Only*	Motor Specs			Capacity in GPM			Max. Diff.	Connections		Heater Element
		HP	Voltage	Phase	100 PSID	125 PSID	150 PSID		Inlet	Outlet	
DL16CD6A (HDPDL16-1P3)	6037-2CNA1	3	115/230	1	13	11	10	200	1-1/4"	1"	Internal
DL16CD6A (HDPDL16-3P3)	6037-2C2B1	3	230/460	3	13	11	10	200	1-1/4"	1"	Internal

* When ordering motors only, switch box & switch are ordered separately.

Companion Flange Kit

Part #	Description
6133-X1	Companion Flange Kit for FF/DLF075 or FF/DLF150. Includes flanges, gaskets, studs and nuts for both inlet and outlet.

Autogas Pump Packages

Includes pump, coupling, motor and bypass valve. Some packages include a VFD.

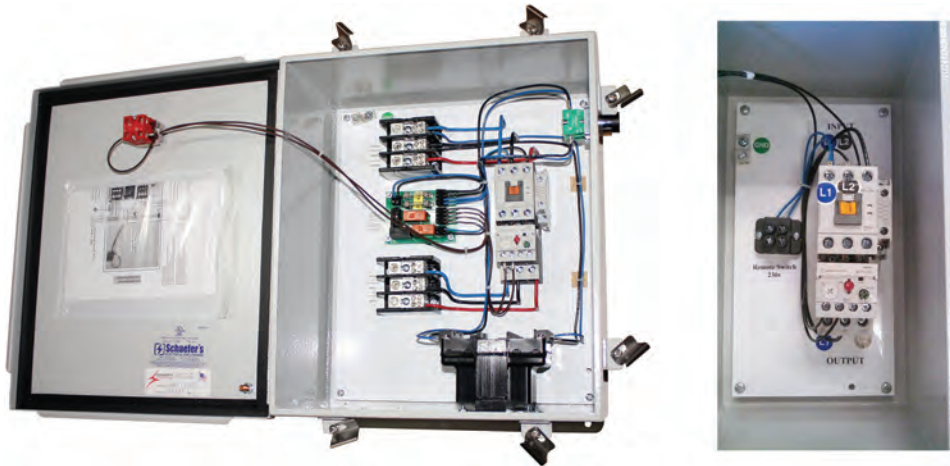


Part #	Description
HDPDL16-1P3-75BAU	Pump, coupling, B166B-75BAU bypass & 3HP-1PH C-face motor
HDPDL16-3P3-75BAU	Pump, coupling, B166B-75BAU bypass & 3HP-3PH C-face motor
HDPDL16-1P33-75BAU	Pump, coupling, B166B-75BAU bypass, 3HP-3PH C-face motor & 4204-6X1 VFD
HDPDLF060-3P53	Pump, coupling, B166B-1CAU bypass, & 5HP-3PH C-face motor
HDPDLF075-1P75	Pump, coupling, B166B-1CAU bypass, 7.5HP-3PH C-face motor & 4204 VFD
HDPDLF075-3P75	Pump, coupling, B166B-1CAU bypass & 7.5HP-3PH C-face motor
HDPFF075-3P75	Pump, 101 mounting, B166B-1CAU bypass & 7.5HP-3PH motor
HDPFF150-3P10	Pump, 101 mounting, B166B-1CAU bypass & 10HP-3PH motor

Common Pump Magnetic Starter Packages

With ESO Switch & NEMA 4 Enclosure

Magnetic starters are designed for full voltage remote starting of electric motors. All starters include a Emergency Shutoff Overload (ESO) Switch and NEMA 4 Enclosure.



Part #	Phase	Motor HP	Volts	Fail Safe Relay
N4CTK22-9-13-ES	1	2	230	No
N4CTK40-3HP-1P-ES	1	3	230	No
N4CTK40-3HP-1PH-ES-FSR	1	3	230	Yes
CTK40-24-36-ES-1P	1	5	230	Yes
CTK40-7-10-ES-3P	3	3	230	No
N4CTK40-3HP-3PH-ES-FSR	3	3	230	Yes
N4CTK22-3HP-3PH-ES-FSR-480	3	3	480	Yes
CTK40-16-22-ES-3P	3	5	230	Yes
CTK40-18-26-ES-3P	3	7.5	230	Yes

Magnetic Motor Starters

With NEMA 4 Enclosure

Magnetic Motor Starter with thermal overloads without push button On/Off switch NEMA 4

Part #	Phase	Motor HP	Volt
N4CTK22-5-8	3	2	230
N4CTK22-7-10	3	3	230
N4CTK22-12-18	3	5	230
N4CTK40-18-26	3	7.5	230
N4CTK40-24-36	3	10	230
N4CTK85-34-50	3	15	230
N4CTK85-45-65	3	20	230
N4CTK40480-24-36	3	20	480
N4CTK85-54-74	3	25	230
N4CTK40480-28-40	3	25	480
N4CTK85-63-85	3	30	230
N4CTK40480-34-50	3	30	480

Explosion Proof

Magnetic Motor Starter with thermal overloads without push button On/Off switch - EXPLOSION PROOF

Part #	Phase	Motor HP	Volt
EXCTK22-5-8	3	2	230
EXCTK22-5-8	3	3	230
EXCTK22-5-8	3	5	230
EXCTK40-18-26	3	7.5	230
EXCTK40-24-36	3	10	230
EXCTK85-34-50	3	15	230
EXCTK85-45-65	3	20	230
EXCTK40480-24-36	3	20	480
EXCTK85-54-74	3	25	230
EXCTK40480-28-40	3	25	480
EXCTK85-63-85	3	30	230
EXCTK85480-34-50	3	30	480

Manual Starters for C-Series Pumps



Optional manual starters. Thermal overload protection is provided.

Part #	Description	Commonly Used With
2277-X1-28	Motor Mounted Manual Switch Box & Switch w/ P28 heater element	3/4 HP Single Phase 3450 RPM Motor
2277-X2-28	Wall Mounted Manual Switch Box & Switch w/ P28 heater element	3/4 HP Single Phase 3450 RPM Motor
2277-X1-32	Motor Mounted Manual Switch Box & Switch w/ P32 heater element	1 HP Single Phase 3450 RPM Motor
2277-X2-32	Wall Mounted Manual Switch Box & Switch w/ P32 heater element	1 HP Single Phase 3450 RPM Motor
Accessories		
600-TOX5	Internal Switch Only	Corken C-Series Pump
2277-X	Cover & Toggle for Switch Box	Corken C-Series Pump
2277	Cover (only) for Switch Box	Corken C-Series Pump
P28	Heater Element for 3/4 HP Motor	Corken C-Series Pump
P32	Heater Element for 1 HP Motor	Corken C-Series Pump

When Ordered with Pump

Part #	Description
SM-25	Motor mounted starter for 1 HP motor
S-25	Separate remote wall mounted starter for 1 HP motor
SM-30	Motor mounted starter for 2 HP motor
S-30	Separate remote wall mounted starter for 2 HP motor

Explosion Proof Switch Box & Switch



Part #	Description	Commonly Used With
929980	Manual Switch Box & Switch	1-1/2 HP Single Phase 1725 RPM Motor (Blackmer LGF1 Series Pump or 2 HP Circuit Switch)
929980SW	Internal Switch only	N/A

3 Phase Disconnects



3-Phase 230 & 460 Volt Disconnects NEMA 3 (includes 3 fuses)

Part #	Pump HP	Amps	Volt
GENLTG4221R15	1.5 - 2 - 3 - 5	15	230
GENLTG4221R30	7.5 - 10	30	230
GENLTG4222R40	15	40	230
GENLTG4222R60	20	60	230
GENLTG4223R40	25 - 30	80	230
GENTH3361R30	20 - 25	30	460/480
GENTH3361R40	30	40	460/480

Self-Contained Compressor System

Parafour Eco-Air Series



P4-Eco-Air



P4-Eco-Air-Lite



The P4-ECO-Air Series, Self-Contained Compressor Systems, offer Autogas station operators, bulk plant and distribution systems a unique and reliable way to operate pneumatic controls, with little or no maintenance, and no ongoing cost of consumables (either compressed nitrogen, or tank pressure propane vapor).

- Operating Temperature Range = -45°C to 55°C
- Operating Voltage = 120v 60 Hz or 220v 50 Hz (Specify when ordering.)
- Circuit Protection = 10 amp supplemental breaker (requires minimum 10 amp primary service breaker)
- Enclosure = NEMA 4X / 12 / 13, Poly enclosure, metal enclosure is optional
- Output Pressure range = 30-60 psi (2-4.5 bar) field adjustable
- Reservoir Size = Eco-AIR unit is 1 US gallon (7.5 litres), ECO Air-Lite has no reservoir
- Reservoir storage pressure = 80-120 PSI (5.5 – 8.5 bar)
- Min pressure / recharge point = 40 psi
- Compressor Maintenance = NONE
- Regulated Outlet Pressure = 0-100 psi gauge

Part #	Actuators Controlled	Storage Reservoir	Water Drain	Indicator Lamps	External Alarm
P4-Eco-Air	21	Yes	Automatic	1-Power, 1-Fault	Yes - Visual and/or Audible
P4-Eco-Air-Lite	3	No	Manual	1-Power	No

Fill Station Meters

1" Aluminum LPG Meter - Type 4D MD



100841.000

Includes vapor eliminator register and differential valve. Aluminum design is 40% lighter than previous ductile iron models.

Part #	Description
400051-VR	With Veeder Root register only
400051-002	With register & ATC
400051-600	With Neptune 600 register
400051-LR	Without register
100841.000	Dry Reed Bi-Directional SP/ST Neptune Digital Pulse Electronic Transmitter

Decals & Signs

**LIQUID
LIQUID
LIQUID
LIQUID
LIQUID**

Part #	Description	Application	Material	Size	Colors
V-90-5	Liquid	Bulk Storage	Vinyl	Five 4" x 1" per sheet	Red on White

**VAPOR
VAPOR
VAPOR
VAPOR
VAPOR**

Part #	Description	Application	Material	Size	Colors
V-91-5	Vapor	Bulk Storage	Vinyl	Five 4" x 1" per sheet	Red on White

LIQUEFIED PETROLEUM GAS

Part #	Description	Application	Material	Size	Colors
V-302BB	Liquefied Petroleum Gas	Bulk Storage	Vinyl	26" x 4" - 3" Letters	Red on White
V-302C	Liquefied Petroleum Gas	Bulk Storage	Vinyl	24" x 3" - 2" Letters	Red on White

PROPANE GAS

Part #	Description	Application	Material	Size	Colors
V-28A	Propane	Bulk Storage	Vinyl	27.25" x 6.75" - 6" Letters	Red on White
V-28B	Propane	Bulk Storage	Vinyl	18" x 5" - 4" Letters	Red on White
V-28BB	Propane	Bulk Storage	Vinyl	14" x 4" - 3" Letters	Red on White
V-28C	Propane	Bulk Storage	Vinyl	12" x 3" - 2" Letters	Red on White
M-28B	Propane	Bulk Storage	Metal	18" x 5" - 4" Letters	Red on White

FLAMMABLE GAS

Part #	Description	Application	Material	Size	Colors
V-17A	Flammable Gas	Bulk Storage	Vinyl	30" x 8" - 6" Letters	Red on White
V-17B	Flammable Gas	Bulk Storage	Vinyl	24" x 6" - 4" Letters	Red on White
V-17C	Flammable Gas	Bulk Storage	Vinyl	12" x 3" - 2" Letters	Red on White

FLAMMABLE

Part #	Description	Application	Material	Size	Colors
V-24A	Flammable	Bulk Storage	Vinyl	28" x 7" - 6" Letters	Red on White
V-24B	Flammable	Bulk Storage	Vinyl	22" x 5" - 4" Letters	Red on White
V-24C	Flammable	Bulk Storage	Vinyl	14" x 3" - 2" Letters	Red on White

NO SMOKING

Part #	Description	Application	Material	Size	Colors
V-23A	No Smoking	Bulk Storage	Vinyl	27.5" x 6.75" - 6" Letters	Red on White
V-23B	No Smoking	Bulk Storage	Vinyl	27.25" x 4.75" - 4" Letters	Red on White
V-23C	No Smoking	Bulk Storage	Vinyl	14" x 3" - 2" Letters	Red on White
M-23B	No Smoking	Bulk Storage	Metal	27.25" x 4.75" - 4" Letters	Red on White

Decals & Signs



Part #	Description	Application	Material	Size	Colors
V-23CE	No Fumar	Bulk Storage	Vinyl	12" x 3" - 2" Letters	Red on White



Part #	Description	Application	Material	Size	Colors
V-26B	No Smoking or Open Flames within 50 Feet	Bulk Storage	Vinyl	18" x 12"	Red on White
M-26B	No Smoking or Open Flames within 50 Feet	Bulk Storage	Metal	18" x 12"	Red on White



Part #	Description	Application	Material	Size	Colors
V-128	Caution. This Container is Not Equipped with an OPD - for Horizontal Tanks	Bulk Storage	Vinyl	3.75" x 4"	Red on White



Part #	Description	Application	Material	Size	Colors
V-66	NQT	Bulk Storage	Vinyl	6.5" x 2.75"	Red on White



Part #	Description	Application	Material	Size	Colors
05-V-32	5 Year Inspection Kit	Bulk Truck Transport	Vinyl	18" x 6"	Black on White



Part #	Description	Application	Material	Size	Colors
AA-16	Liquefied Petroleum Gas - UN 1075 - Flammable Gas	Cylinder	Vinyl	4" x 1.5"	Red & Black on White

Not Available in Curved



Part #	Description	Application	Material	Size	Colors
CS-33	Liquefied Petroleum Gas - UN 1075 - Flammable Gas	Cylinder	Vinyl	5" x 1.25"	Red & Black on White
12-AA14	No Cylinders Allowed Indoors	Cylinder	Vinyl	6" x 2"	Red & Black on White

Curved Only



Part #	Description	Application	Material	Size	Colors
V-206	Recommended Procedures for Filling DOT (ICC) and ASME LP Gas Container	Cylinder	Vinyl	21.25" x 14"	Red on White
P-206	Recommended Procedures for Filling DOT (ICC) and ASME LP Gas Container	Cylinder	Polyethylene	21.25" x 14"	Red on White

Decals & Signs



Part #	Description	Application	Material	Size	Colors
V-44	3 in 1 - D.O.T. 1075, NFPA Hazard Rating, Warning ANSI/NFPA Pamphlet 58	Cylinder	Vinyl	6.75" x 4.75"	Red, Blue, Yellow and Black



Part #	Description	Application	Material	Size	Colors
V-55R	2 in 1 - D.O.T. 1075, Warning ANSI/NFPA Pamphlet 58	Cylinder	Vinyl	7.375" x 3.375" Curved	Red and Black on White



Part #	Description	Application	Material	Size	Colors
HZ-116	NFPA Hazard Rating	Cylinder	Vinyl	5" x 2.25"	Red, Blue, Yellow and Black



Part #	Description	Application	Material	Size	Colors
SP53R	Danger - Flammable Gas Under Pressure - Customer Warnings	Cylinder	Vinyl	9" x 4"	Black on Yellow

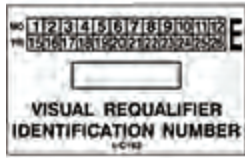


Part #	Description	Application	Material	Size	Colors
V-92	Various Labels	Cylinder	Vinyl	16 per page .375" x 1.75" each	Red on Yellow



Part #	Description	Application	Material	Size	Colors
M97A	Propane Filling Station - Single Faced	Cylinder	Aluminum	2' x 4'	Blue on White
M97-B	Propane Filling Station - Single Faced	Cylinder	Aluminum	3' x 6'	Blue on White
M97-AD	Propane Filling Station - Double Faced	Cylinder	Aluminum	2' x 4'	Blue on White
M97-BD	Propane Filling Station - Double Faced	Cylinder	Aluminum	3' x 6'	Blue on White
M97-C	Propane Sold Here - Single Faced	Cylinder	Aluminum	2' x 4'	Blue on White
M97-AX	Propane Cylinders Exchanged - Single Faced	Cylinder	Aluminum	2' x 4'	Blue on White
M97-AXD	Propane Cylinders Exchanged - Double Faced	Cylinder	Aluminum	2' x 4'	Blue on White
M97-FR	Frame	Cylinder	Metal	2' x 4'	

Decals & Signs



Part #	Description	Application	Material	Size	Colors
C163	Visual Requalifier ID Number	Cylinder	Vinyl	3" x 1.875"	Black on White



Part #	Description	Application	Material	Size	Colors
ESV-SIGN-R	Propane Emergency Shutoff - Toggle Off	Emergency Shutoff	Metal	18" x 24"	Red on White



Part #	Description	Application	Material	Size	Colors
ESV-SIGN	Propane Emergency Shutoff - Toggle Off	Emergency Shutoff	Metal	5.5" x 9.5"	Red on White



Part #	Description	Application	Material	Size	Colors
ESV-SIGN-CABLE-PULL	Propane Emergency Shutoff - Pull to Close - Cable	Emergency Shutoff	Metal	5.5" x 9.5"	Red on White



Part #	Description	Application	Material	Size	Colors
V-81	Propane Emergency Shutoff - Pull to Close	Emergency Shutoff	Vinyl	10" x 12"	Red on White
P-81	Propane Emergency Shutoff - Pull to Close	Emergency Shutoff	Polyethylene	10" x 12"	Red on White



Part #	Description	Application	Material	Size	Colors
V-82	Propane Emergency Shutoff - Push to Close	Emergency Shutoff	Vinyl	10" x 12"	Red on White
P-82	Propane Emergency Shutoff - Push to Close	Emergency Shutoff	Polyethylene	10" x 12"	Red on White

GAS LINE

Part #	Description	Application	Material	Size	Colors
VGS100	Gas Line	Gas Pipe Marking	Vinyl	5" x 1" Roll of 100	Black on Yellow

PROPANE GAS 2 PSI.
 PROPANE GAS 2 PSI.
 PROPANE GAS 2 PSI.
 PROPANE GAS 2 PSI.
 PROPANE GAS 2 PSI.
 PROPANE GAS 2 PSI.
 PROPANE GAS 2 PSI.
 PROPANE GAS 2 PSI.
 PROPANE GAS 2 PSI.
 PROPANE GAS 2 PSI.

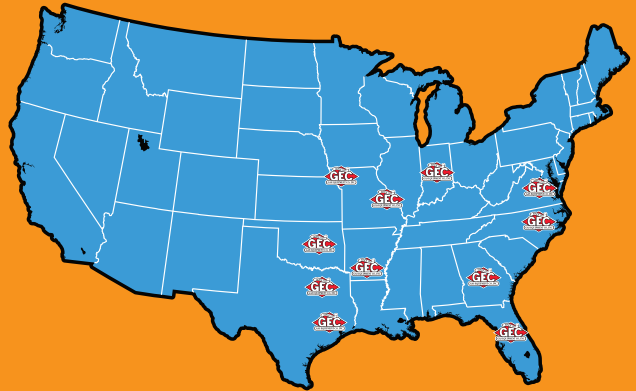
Part #	Description	Application	Material	Size	Colors
V-62	Propane Gas 2 PSI	Gas Pipe Marking	Vinyl	10 per page .375" x 3"	Black on Yellow

Gas Equipment Company, Inc. is an integrated warehouse distributor of in-process, transfer and control equipment

COMPANY

ESTABLISHED
1937

11
Sales &
Warehouse
Locations



1,937

Years of Industry
Experience

EMPLOYEES

90+



1,380

Years Employed
with GEC

MARKETS



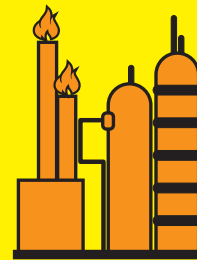
Propane



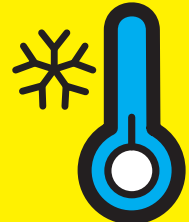
NH3 Anhydrous
Ammonia



Liquefied
Natural Gases



Petrochemical,
Refined Fuels,
NOX/SCR



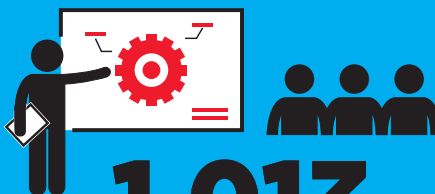
Industrial
Gases
Cryogenics

ON-SITE TRAINING



28

Training
Courses



1,013

Attendees

1,522

Curricula Certificates of
Achievement Awarded

**Proud of our Heritage;
Focused on your Future!**





**Proud of our Heritage;
Focused on your Future!**

ATLANTA, GA

(800) 241-4155
(770) 995-1131
FAX (770) 995-1216
1440 Lakes Parkway, Suite 300
Lawrenceville, GA 30043

CHANDLER, OK

(800) 763-0953
(405) 258-2652
FAX (405) 258-9108
1125 S. Industrial Rd, Bldg E
Chandler, OK 74834

DALLAS, TX

(800) 821-1829
(972) 241-2333
FAX (800) 875-8553
11616 Harry Hines Blvd.
Dallas, TX 75229

FAYETTEVILLE, NC

(800) 447-1625
(910) 323-3747
FAX (910) 323-3879
1565 Wilmington Hwy.
Fayetteville, NC 28306

HOUSTON, TX

(800) 334-7816
(713) 896-1077
FAX (713) 896-9299
11510 N. Petro Park
Houston, TX 77041

INDIANAPOLIS, IN

(800) 241-1971
(317) 541-1971
FAX (317) 541-8352
3168 N. Shadeland Ave.
Indianapolis, IN 46226

KANSAS CITY, MO

(800) 821-5062
(816) 746-9555
FAX (816) 746-8522
224 NW Plaza Drive
Kansas City, MO 64150

LITTLE ROCK, AR

(800) 643-8222
(501) 376-7141
FAX (501) 376-0917
2711 Springer Blvd.
Little Rock, AR 72206

ORLANDO, FL

(800) 821-0631
(407) 843-6536
FAX (407) 648-1546
4400 Hwy. 19A, Suite 6
Mount Dora, FL 32757

RICHMOND, VA

(800) 368-4013
(804) 717-5723
FAX (804) 717-5727
12660 Bermuda Triangle
Chester, VA 23836

ST. LOUIS, MO

(800) 423-4685
(314) 298-8219
FAX (314) 298-7753
13789 Rider Trail N. Ste. 106
Earth City, MO 63045

www.gasequipment.com
www.youtube.com/GasEquipmentTV

E-mail: info@gasequipment.com

Copyright © 2020 Gas Equipment Company, Inc.