

3" Heavy Duty Swing Check with Flow Indicator

A7624

This back check valve is designed to provide required back flow protection for the unloading riser in the bulk plant's transfer area. It is designed specifically for pipeline installation and is suitable for LP-Gas and anhydrous ammonia service. Product flow moves the swing check to the open position, when flow stops the spring loaded swing check closes.



A7624

Ordering Information

Part #	For Use With:	Inlet & Outlet Connections	Liquid Capacity at 10 PSIG Drop GPM
A7624	LPG & NH3	3" F.NPT	1325-GPM(LPG) 1173-GPM(NH3)

2" Heavy Duty Swing Check with Flow Indicator

A7616

This back check valve is designed to provide required back flow protection for the unloading riser in the bulk plant's transfer area. It is designed specifically for pipeline installation and is suitable for LP-Gas and anhydrous ammonia service. Product flow moves the swing check to the open position, when flow stops the spring loaded swing check closes.



A7616

Ordering Information

Part #	For Use With:	Inlet & Outlet Connections	Liquid Capacity at 10 PSIG Drop GPM
A7616	LPG & NH3	2" F.NPT	711-GPM(LPG) 640-GPM(NH3)

Sight Flow Indicators for Bulk Plants

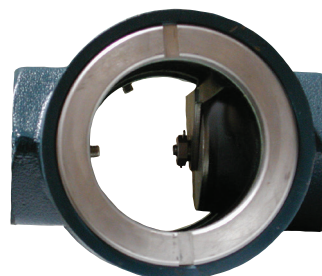
A7794 and A7796

Designed to promote maximum pump efficiency, these indicators enable bulk plant operators to visually inspect liquid flow conditions. With glass on both sides of the indicator, flow can be observed from either side, even under some poor light conditions. The integral swing check also serves as a back-check valve to prevent reverse flow and product loss if the hose fails in a loading operation.

By installing an indicator on the upstream side of the plant pump, suction conditions can be observed and the pump speed adjusted to obtain the maximum possible flow rate without cavitation. Additionally, if an indicator is installed in the piping at the loading rack, just ahead of the loading hose, the operator can maintain a constant check on pump conditions.

Both installations are designed to allow for observation to provide maximum pump efficiency and ensure safe plant pump operation.

In compressor operations a sight flow indicator installed in the liquid line will give a visual indication when the tank car or transport is emptied. Compressor operation can then be immediately reversed to start recovery of the vapor.



A7794

Ordering Information

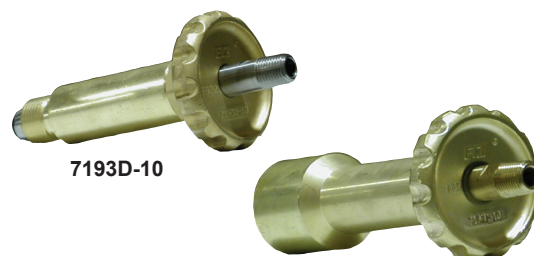
Part #	A Inlet/Outlet Connections	B Length
A7794	2" F. NPT	5-3/4"
A7796	3" F. NPT	7-3/8"

Hose End Adapters for DOT Cylinder Filling

7193D-10 and 7193U-10

Designed to provide quick and easy filling of DOT cylinders with POL or Type I connections. This adapter may be used with hydraulic and electric automatic systems or with manual systems in conjunction with a RegO 7901TB Quick Acting Shut-Off Valve.

These filling connectors have an extended connection on the handwheel, which makes it possible to connect the loading hose to valves on cylinders with fixed collars. The handwheel is well outside the collar for easy operation.



7193D-10

7193U-10

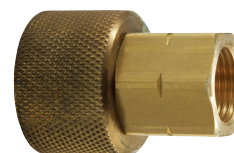
Ordering Information

Part #	Applications	Inlet Connection	Outlet Connection	Materials
7193D-10	Filling of DOT Cylinders with POL Connections	1/4" M. NPT	M. POL (CGA 510)	Brass & Stainless Steel
7193U-10	Filling of DOT Cylinders with Type I Connections		Type 1 Connection (1-5/16" F. ACME)	Brass

Connector for DOT Cylinder Filling Adapter

7193T-10

The 7193T-10 Connector is designed for use on the 7193D-10 Filling Adapters. Connector allows quick connection to the Type I 1^{5/16}" M. ACME threads for operators that fill both POL and Type I valves.



7193T-10

Ordering Information

Part #	Applications	Inlet Connection	Outlet Connection	Materials
7193T-10	Converts 7193D-10 Adapters from POL to a Type 1 Connection	F. POL CGA 510	Type 1 Connection (1-5/16" F. ACME)	Brass

New Patented Low Emission Hose End Safety Adapter

7193D-10L & 7193U-10L

Low Emission Adapter (1.18 cc at disconnect) designed to provide quick and easy filling of DOT cylinders with POL connections with minimal release of product on disconnect. This adapter may be used with dispensing systems in conjunction with RegO 7901T Series Quick Acting Shut-Off Valve. Balanced, light weight design for filling into 20 # - 200 # cylinders.



7193D-10L Series



7193U-10L Series

Ordering Information

Part #	Application	Inlet Connection	Outlet Connection	Materials
7193D-10L	Filling of DOT cylinders with POL Connections	1/4" M. NPT	M. POL (CGA 510)	Brass & Stainless Steel
7193U-10L	Filling of DOT cylinders with Type 1 Connections	1/4" M. NPT	Type 1 Connection (1-5/16" F. ACME)	Brass

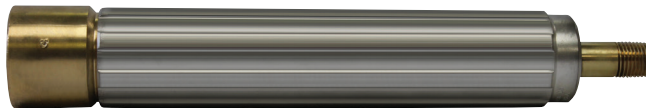
Hose End Adapter for Lift Truck Cylinder Filling

7193L-10A

The 7193L-10A is designed to provide quick and easy attachment of the filling hose to DOT cylinders equipped with RegO 7141M check connectors.

The 1-1/4" ACME outlet threads facilitate rapid make-up. When connected, back-checks in the adapter and check connector automatically open. Low pressure drop between the two ensures high filling rates. An integral check closes when disconnected, eliminating the need to close any valves manually to disconnect the charging hose.

Because a leak-tight seal is formed before the integral check opens or closes, product loss is kept to an absolute minimum when connecting or disconnecting the loading hose.



7193L-10A

Ordering Information

Part #	Application	Inlet Connection	Outlet Connection	Body Material	Accessories
					Adapter
7193L-10A	Filling of Fork Lift Cylinders*	1/4" M. NPT	1-1/4" F. ACME	Brass	5760A

*The 7193L-10A is intended to be permanently attached to the filling hose.

A 5760A adapter enables the 7193L-10A to be attached to the POL connection on the 7193D-10 at regular cylinder filling stations to allow for occasional filling of fork lift cylinders.

Lever Operated Hose End Adapter for Fork Lift Cylinder Filling

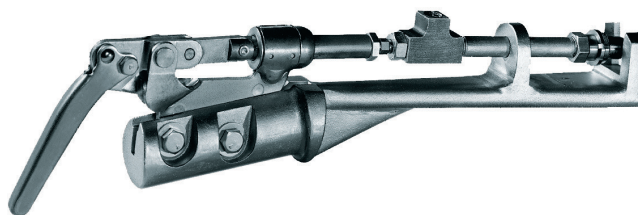
7193K-10B

Designed to drastically reduce labor and time when continuously filling large numbers of lift truck cylinders equipped with RegO 7141M check connectors.

Rapid make-up is accomplished by simply slipping the adapter yoke behind the hex wrenching section of the 7141M connector and depressing the lever. When the cylinder is filled, the adapter is easily disengaged by releasing the operating lever. When connected, back checks in the adapter and connector automatically open. An integral check closes when disconnected, eliminating the need to close any valves manually on the filling manifold to disconnect the charging hose. The shut-off valve on the container must be closed after filling.

Because a leak-tight seal is formed before the checks close, product loss is kept to an absolute minimum when connecting or disconnecting the loading hose.

The 7193K-10B is intended to be permanently attached to the filling hose.



7193K-10B

Ordering Information

Part #	Application	Inlet Connection	Outlet Connection	Materials
7193K-10B	Lever Operated for Quick Filling of Fork Lift Cylinders	1/4" F. NPT	Quick Disconnect Yoke*	Brass and Steel

* For use with RegO 7141M check connector.

Combination Valve for Bulk Storage Containers

A2805C

Designed for installation on bulk storage containers, this valve combines a pressure gauge mounting and provision for a fixed tube liquid level gauge.

The shut-off valve prevents the pressure gauge from being subjected to constant pressure, thereby prolonging its life and accuracy. The valve may be closed, and the vent valve opened to vent pressure from the gauge to permit replacement.

For fixed liquid level gauging, the valve can be mounted at the maximum permitted filling level. When equipped with a dip tube threaded 1/8" M.NPT, it can be installed at any convenient level.



A2805C

Ordering Information

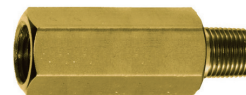
Part #	Container Connection	Service Connection	Liquid Level Vent
A2805C	3/4" M. NPT	1/4" F. NPT for Gauge Mounting	Tee Handle

*Has 1/8" F. NPT opening for installing separate dip tube.

Gritrol Fuel Line Filters

12802

Designed especially for use in liquid motor fuel lines to trap foreign material which otherwise may damage precision components in the LP-Gas carburetion system. These filters incorporate an integral sintered metal filter element in a straight through design.



12802

Ordering Information

Part #	Inlet Connection	Outlet Connection
12802	1/4" F. NPT	1/4" M. NPT

Vent Valves

3165C, 3165D, 3165S and TSS3169

Especially designed to bleed off liquid or vapor pressures trapped in transfer lines. When installed in the downstream boss of RegO globe and angle valves used at the end of a liquid transfer hose, the bleeder valve allows for the controlled venting of the product and indicates to the operator that the valves are closed and he can disconnect the coupling. They may also be used as a fixed liquid level gauge where the dip tube is part of the container.

The 3165C, 3165S and TSS3169 incorporates a No 54 drill size orifice. The 3165D incorporates a No 72 drill size orifice.

An optional instruction plate with "Stop Filling When Liquid Appears" may be ordered for use with these valves.



3165C



3165S



TSS3169

Ordering Information

Part Number	Service	Connection	Actuation	Accessories
				Warning Plate Kit
3165C	LP-Gas Only	1/4" M. NPT	Ribbed	2550-40P
3165D			Slotted	
3165S			Tee Handle	
TSS3169	LP-Gas & NH ₃			

Fixed Liquid Level Gauges

3165 Series and TA3169F

Especially designed to provide a visible warning when containers are filled to the maximum permitted filling level. At the start of the filling operation, with the vent stem opened, the valve discharges vapor. When the maximum permitted filling level is reached, the valve discharges liquid. The 3165CF*, 3165CF12.0, 3165SF12.0 and TA3169F12.0 incorporate a No 54 drill orifice; the 3165DF* and 3165DF12.0 incorporate a No 72 drill orifice. They all are normally furnished with a 12" 3/16" OD dip tube.

An optional instruction plate with "Stop Filling When Liquid Appears" may be ordered for use with these valves.



3165CF12.0
3165DF12.0



TA3169F12.0

Ordering Information

Part #	Service	Connection	Actuation	Dip Tube Length	Accessories
					Warning Plate Kit
3165CF*	LP-Gas Only	1/4" M. NPT	Ribbed	*	2550-40P
3165DF*					
3165CF12.0			Slotted	12"	
3165DF12.0					
3165SF12.0	LP-Gas & NH3	Tee Handle			
TA3169F12.0					

Pressure Gauges

Especially designed in a variety of sizes and construction for the LP-Gas and anhydrous ammonia industry.



612-PG



5575

Ordering Information

Part #	Service	Case Material	Maximum Pressure	Inlet Connection M.NPT	Case Size	Increment Divisions	
2434A-2*	LP-Gas Only	Steel	35" w.c. and 20 oz. (Dual)	1/4"	2-1/2"	1" w.c. and 1 oz.	
2434-2**							
3226A-3		Brass	30 PSIG		2"	1/2 PSI	
2411							
5575		Steel	60 PSIG			1 PSI	
5547							
5576		Brass	100 PSIG		2 PSI		
1286		Steel					
948		Brass	300 PSIG		2"	5 PSI	
948B							
A8060	NH ₃ and LP-Gas	Steel	60 PSIG	2-1/2"	5 lb.		
A8150			150 PSIG				
A8400			400 PSIG				
612-PG	LP-Gas Only			0-300 PSI	1/8"	1-1/2"	30 PSI
612-G2						2"	5 PSI

* 1/4" Hose Connection

** 1/8" M. NPT Connection

Needle Valves

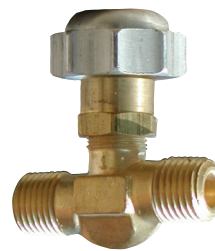
1224, 1316 and 1318

Additional Needle Valves can be found on page 273.

These valves are high quality, "true" throttling valves. Unlike most so-called needle valves, both the body seat and stem are tapered to provide fine, precise control over a wide range of adjustment without stem galling.

The 1224 may be used as a small, inexpensive shut-off valve between a pressure gauge and bulk storage container to allow for convenient gauge replacement.

The 1316 and 1318 provide taper pipe thread by left hand hose connection threads and are useful in a wide range of torch and fuel burner applications where an accurate throttling action is required.



1224

Ordering Information

Part #	A. Inlet Connection	B. Outlet Connection	C. Height	D. Length
1224WA	1/4" M. NPT	1/4" M. NPT	1-9/16"	1-3/4"
1316WA	9/16" - 18 L.H.	1/8" M. NPT		
1318WA		1/4" M. NPT		

Gaskets

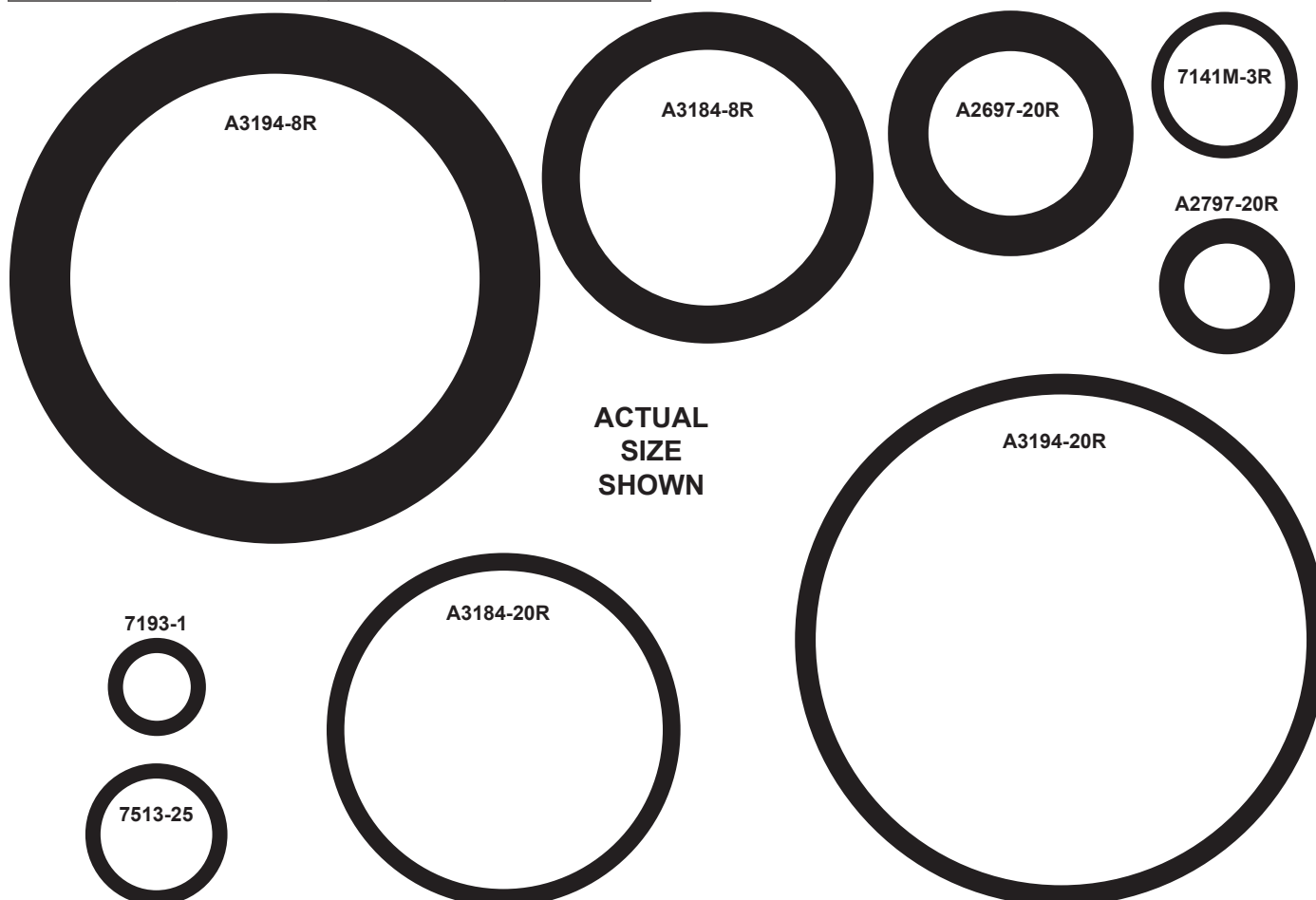
Ordering Information

Part #	Connections	Size	Package Size
7141M-3R	Forklift	1-1/4" ACME	25
A2697-20R	Filter, Vapor & Adapter	1-3/4" ACME	25
A2797-20R		1-1/4" ACME	25
A3184-8R		2-1/4" ACME	10
A3194-8R		3-1/4" ACME	10

Buna-N O-Rings

Ordering Information

Part #	Connections	Size	Package Size
7193-1	POL Nipple	POL	1
7513-25	Internal Forklift	1-1/4" ACME	1
A3184-20R	Filter, Vapor & Adapter	2-1/4" ACME	10
A3194-20R		3-1/4" ACME	10



Miscellaneous Equipment
(Including Rotogauges & ESVs)