

Extended Type Hose Couplings for Vapor and Liquid Service

A7571 and A7575 Series

Designed especially for liquid filling and vapor equalization of LP-Gas and anhydrous ammonia. The limited travel of the handle on the tailpiece minimizes spin-off, encouraging cautious removal to properly bleed off trapped product to ensure closure of the filler valve and hose end valve. The ACME threads are machined on a rugged steel insert which is permanently cast in the aluminum handle, providing for durability under repeated use.



A7571 Series



A7575 Series

Ordering Information

Part Number	Type of Service	A. Hose Connection (M. NPT)	B. Coupling Connection (F. ACME)	C. Approx. Length
A7575L2*	Liquid	1/2"	1-3/4"	7"
A7575L3		3/4"		
A7575L4		1"		
A7575L5**		1-1/4"		
A7571LA	Vapor	1/2"	1-1/4"	
A7571LB		3/4"		

* Includes 7199-33 adapter, shipped loose.

** Includes A7575L5-1 adapter, shipped loose.

Short Type Hose Couplings for Vapor and Liquid Service

3171, 3175, 3181, 3185 and 3195 Series



3175 Series



A3185 Series



3171A Series



3191 Series

Ordering Information

Part Number	Material	Style	A. Hose Connection (M. NPT)	B. Coupling Connection (F. ACME)	C. Tailpiece Bore	D. Hose End To Nut	E. Overall Length
3175B	Brass	A	1/2"	1-3/4"	35/64"	1-13/16"	2-11/16"
3175			3/4"		3/4"		
3175A			1"		15/16"		
3185			1-1/4"	2-1/4"	1-3/16"	2-11/16"	3-3/4"
3195	Brass Nut & Steel Nipple	B	2"	3-1/4"	7/8"	2-1/4"	3-5/8"
3195S*							
A3175	Steel	A	3/4"	1-3/4"	3/4"	2"	2-7/8"
A3175A			1"		7/8"	2-1/4"	3-1/8"
A3185		B	1-1/4"	2-1/4"	1-1/4"	2-1/8"	3-3/16"
A3195			2"	3-1/4"	1-7/8"	2-1/4"	3-5/8"
A3195S*	Brass	C					
3171			3/8"	1-1/4"	3/8"	1-17/32"	2-13/32"
3171A			1/2"		31/64"		
3181			3/4"	1-3/4"	3/4"	1-3/16"	2-11/16"
3181A			1"		3/4"	1-7/8"	2-3/4"
3191		D	1-1/4"	2-1/4"	1-3/16"	2-1/8"	3-3/16"

* With screen.

ACME Check Connectors for Lift Trucks

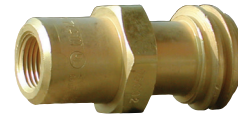
7141F and 7141M

These brass connectors are especially designed to join the carburetor fuel line to the service valve on lift truck cylinders. Sturdy, long lasting ACME threads allow quick, hand-tight assembly that provides for quick and simple cylinder replacement. Back checks automatically close in each connector when disconnected.

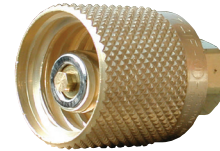
The 7141M couples directly to the service valve. An integral O-ring is designed to seal before the internal check opens, aiding in product loss prevention. A gasket at the ACME thread is a secondary seal when the connectors are tightened together. The connector fits RegO lift truck cylinder filling adapters for fast, convenient filling.

The 7141F accepts fuel line adapter and couples directly to the 7141M. The O-ring seal in the 7141M is designed to seal before the internal check opens to allow product to pass through the connection. The knurled coupling eases threading and the ACME threads provide rapid effortless make-up, even against LP-Gas pressure.

NOTE: Refer to the "Cylinder and Service Valves" section of the L-500 catalog for additional information.



7141M



7141F

Ordering Information

Part #	Application	A. Inlet	B. Outlet	Protective Cap*	Brass	Repair Parts
				Rubber		
7141M	Service Valve	3/8" F. NPT	1-1/4" M. ACME	7141M-40	7141FP	Gasket 7141M-3R (25/pkg)
7141F	Fuel Line	1-1/4" F. ACME	1/4" F. NPT	-	-	O-Ring 7513-2S

* Recommended to minimize foreign material entering valves which could result in leakage.

Unloading Adapters for Container Evacuation

3119A, 3120 and 3121

Designed to provide an efficient means of evacuating an LP-Gas container for relocation or repair. They thread directly onto the 1-3/4" ACME male hose connection of RegO Filler Valves used on RegO Double Check Filler Valves and Multivalves®.

The unloading adapters can be used to withdraw liquid provided the container is equipped with a dip pipe extending from the filler valve to the bottom of the container.



3120



3121



3119A

Ordering Information

Part #	Style	A. Filler Valve Connection	B. Hose Connection
3119A	In-Line	1-3/4" F. ACME	1-3/4" M. ACME
3120	Angle		3/4" F. NPT
3121			

Left Hand Thread ACME Connectors for Vapor Withdrawal Industrial Cylinders

7142LF and 7142LM

These brass connectors are especially designed to join the carburetor **vapor fuel** line to the service valve on industrial cylinders especially designed for and used on propane fueled lawn mowers. Sturdy long lasting ACME **left hand** threads provides for quick hand tight assembly that provides for quick and simple cylinder replacement.



7142LM



7142LF

Ordering Information

Part #	Application	Inlet	Outlet	Protective Cap
7142LM	Vapor Service Valve	3/8" F.NPT	1-1/4" M.ACME –left hand	7141M-40
7142LF	Vapor Fuel Line	1-1/4" F.ACME –left hand	-1/4" F.NPT	-

Filler Hose Adapters

7576, 7577V and 3179A & B

These adapters are designed with minimal flow restriction and recommended for use on the outlet of the LP-Gas delivery truck filler hose. If the controlled bleed off of the connection indicates the filler valve on the tank being filled has failed to close, the hose adapter should be left in place on the filler valve and disconnection should be made at the regular filler hose coupling. (Repair of the filler valve must be made as soon as possible). An integral check valve in these adapters helps prevent further loss of product. The standard filler valve cap should be attached to these adapters when left on the container.



7576



7577V



3179A



3179B

Ordering Information

Part #	Built-in Vent Valve	A Filler Valve Connection	B Hose Connection
7576	Yes	1-3/4" F. ACME	1-3/4" M. ACME
7577V			
3179A	No	1-3/4" F. ACME	1-3/4" M. ACME
3179B			

POL Plugs

Highly recommended for installation in LP-Gas cylinder valve POL outlets whenever the service line is disconnected or when the cylinder is being transported. When properly installed, the POL plug is designed to prevent contamination of the valve outlet and guards against product leakage if the cylinder valve is accidentally opened.



N970P



10538P
(Has hole for attaching wire to prevent loss of plug)

Ordering Information

Part Number	Material	Connection
N970P	Cyclac	M. POL (CGA 510)
10538P	Brass	
3705RC		

3-1/4" M.ACME X 2" M.NPT Adapter with Vent Valve & Integral Screen

5769HVB and 5769VSS

Designed to prevent debris from impeding the action of valves and components of LPG piping systems at bulk plants and industrial plants.



5769HVB

Ordering Information

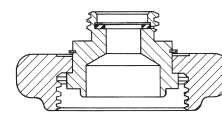
Part Number	Style	Gasket Qty	Vent Valve	Hex Size	Thread	"A" Length
5769HVB	1	1	3165CBT	3-1/4"	2" M.NPT	3.150
5769VSS	1	1	TSS3169			3.150

Caps and Reducers

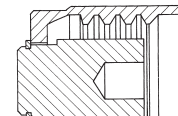
Ordering Information

Cap With Chain & Ring		Cap Only Part #	Material	Thread Connection
Part Number	Ring Fits Pipe Size Up To:			
3144-91	3/4"	3144-9P	ABS	1-1/4" F. ACME
3174-91		3174-9P		1-3/4" F. ACME
3174-93		A8016-9P		1-3/4" F. ACME
A8016-93	1-1/4"		Nylon	
1708C	3/4"	-	Brass	F. POL (CGA 510)
7141FP	-			1-1/4" F. ACME
3175P	1-1/4"		Steel	1-3/4" F. ACME
A3175P				2-1/4" F. ACME
3184-90			Brass	3-1/4" F. ACME
3194-90		5776*		2-1/4" F. ACME
-		-	Steel	3-1/4" F. ACME
A3184-90		A5776*		1-15/16" F. ACME
A3194-90			Brass	3-1/4" ACME
-				
907FP	1"		Steel	2-1/4" M. ACME
3194-90G	-			
3194-90GS			Brass	
3194-91L				
3194-91S			Steel	
3194-91V				
A3194-91L			Brass	
A3194-91S				
A3194-91V			Steel	
5778	3-1/4 F. ACME			

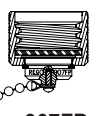
* Reduces to 1-3/4" M. ACME



A5776
Reducer Coupling



7141FP Cap Plug

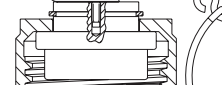


907FP

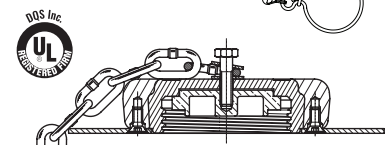
1708C POL Cap



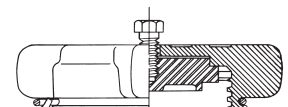
CGA 510



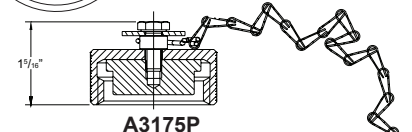
3175P Cap Plug



3194-90G
ACME Cap with Stainless Steel Flange

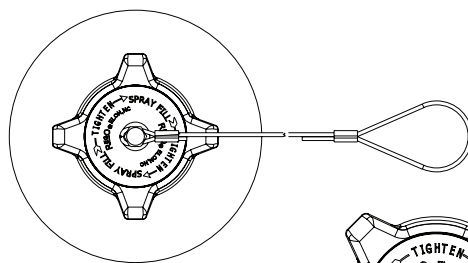


3144-91
Metal Cap

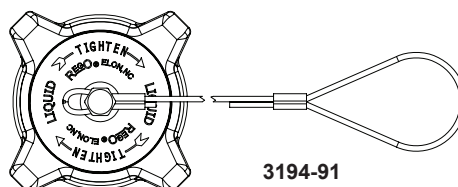


A3175P

Adapters, Connectors & Fittings



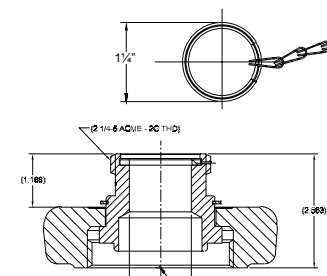
3194-90GS



3194-91

3194-91L

L=Liquid (Red)
S=Spray Fill (Yellow)
V=Vapor (Yellow)



5778

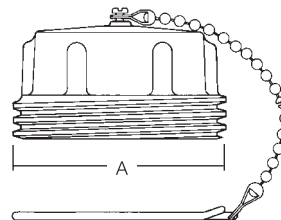
ACME Plugs

Specifically designed to withstand the everyday abuse given to hose end valves on delivery trucks and hose end couplings on risers in bulk plants, these rugged plugs protect the coupling tip as well as prevent the entrance of dirt, dust, snow and rain. They also prevent possible gas contamination from these same sources. The heavily ribbed outer surface permits hand-tight make-up.

These plugs are available in a choice of four sizes which may be used with liquid as well as vapor type couplings. As a convenience, the nylon plugs have a retaining chain and ring to prevent loss during a transfer operation.

All are suitable for LPG or anhydrous ammonia service except the brass 5765PR, which is for LP-Gas only.

Not intended for use as pressure closures.



Ordering Information

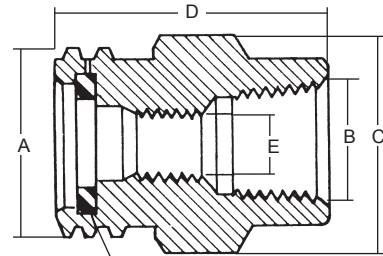
C5763N

Part #	Material	A (M. ACME)	Chain & Ring Fits Pipe Size Up To:
C5763N	Nylon	1-1/4"	3/4"
C5765N		1-3/4"	1-1/4"
5765PR	Brass		Not Applicable
C5767N	Nylon	2-1/4"	1-1/4"
C5769N		3-1/4"	2"

ACME Adapters

Ordering Information

Part #	Material	A M. ACME	B F.NPT	C Hex	D Overall Length	E Diameter	For Spare Gasket Order Part No.
5764A	Brass	1-3/4"	1/4"	1-3/4"	1-3/4"	13/32"	A2697- 20R
5764B			3/8"		1-23/32"	9/16"	
5764C			1/2"		1-1/4"	11/16"	
5764D			3/4"		1-9/32"	29/32"	
5764E			1"		1-5/8"		
5766E		2-1/4"	1"	2-1/4"	2-5/16"	1-3/32"	A3184-8R
5766F			1-1/4"		1-3/8"		
5768G		3-1/4"	1-1/2"	3-1/4"	1-3/4"	1-11/16"	A3194-8R
A5764D	Steel	1-3/4"	3/4"	1-3/4"	2-3/16"	7/8"	A2697- 20R
A5764E			1"				
A5768H		3-1/4"	2"	3-1/4"	1-13/16"	1-15/16"	A3194-8R



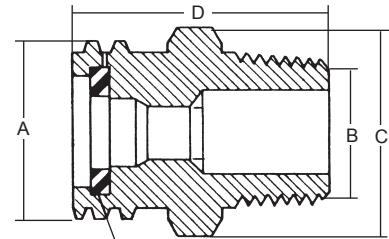
Gasket (Furnished with adapter)

ACME x Female NPT



Ordering Information

Part #	Material	A M. ACME	B M. NPT	C Hex	D Overall Length	For Spare Gasket Order Part No.	
5763D	Brass	1-1/4"	3/4"	1-1/4"	1-3/4"	A2797-20R	
5765D		1-3/4"	3/4"	1-3/4"	1-23/32"	A2697-20R	
5765E			1"		2-3/32"		
5765F			1-1/4"				
5767F		2-1/4"	1-1/4"	2-1/4"	2-3/8"	A3184-8R	
5767G			1-1/2"		2-3/8"		2-7/16"
5767H			2"				
5769H		3-1/4"	2"	3-3/8"	2-7/8"	A3194-8R	
5769K			3"	3-1/2"	3-5/8"		
5769M			3-1/4" ACME	3-1/4"	2-3/4"		
A5765C	Steel	1-3/4"	1/2"	1-3/4"	2-3/16"	A2697-20R	
A5765D			3/4"				
A5765E			1"				
A5765F			1-1/4"				
A5767F		2-1/4"	1-1/4"	2-1/4"	2-3/8"	A3184-8R	
A5769H		3-1/4"	2"	3-1/4"	2-5/8"	A3194-8R	
A5769K			3"	4"	3-13/16"		

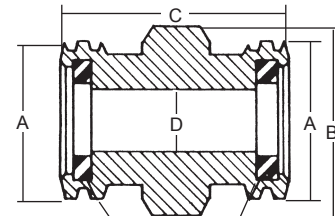


Gasket (Furnished with adapter)

ACME x Male NPT

Ordering Information

Part #	Material	A M. ACME	B Hex	C Overall Length	D Diameter	For Spare Gasket Order Part No.
5765M	Brass	1-3/4"	1-3/4"	2-1/16"	29/32"	A2697-20R
5767M		2-1/4"	2-1/4"	2-5/16"	1-25/64"	A3184-8R
5769M		3-1/4"	3-1/4"	2-3/4"	1-15/16"	A3194-8R



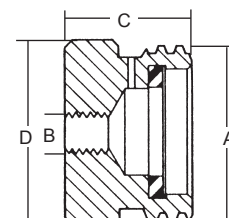
Gasket (Furnished with adapter)

ACME x ACME

Ordering Information

Part #	Material	A M. ACME	B F. NPT	C Overall Length	D Diameter	For Spare Gasket Order Part No.
A5764W	Steel	1-3/4"	3/8"	1-1/4"	1-3/4"	2697-20
5764W	Brass					

* 3/8" -16 UNC Thread.



ACME x Miscellaneous
(Recommended for securing hose-end valve when not in use).

Low Emission ACME Connector For Transports and Bobtails

6588LE & 6589LE

Designed to provide fast filling of bobtails, transports and large bulk storage tanks while providing for low emission of LPG when disconnecting.



6588 Series

Ordering Information

Part #	ACME Connection	Outlet Connection M.NPT	Wrench Flats	Hydrostatic Relief Valve	Propane Capacity at Various Differential Pressures (GPM)		
					5 PSIG	10 PSIG	25 PSIG
6588LE	3-1/4"	2"	3-1/2"	3125L	138	223	349
6589LE	3-1/4"	3"		3125L			

Copper Pigtails

Straight Pigtails

Ordering Information

Connections	Approximate Length	Part #		
		1/4" Tube		3/8" Tube
		7/8" Hex Short Nipple	1-1/8" Hex Long Nipple	7/8" Hex Short Nipple
M.POL x M.POL	5"	-	-	913PS05
	12"	912PS12	-	913PS12
	20"	912PS20	912PA20	913PS20
	30"	912PS30	-	913PS30
	36"	912PS36	912PA36	913PS36
	48"	912PS48	912PA48	913PS48
1/4" Inverted Flare x M.POL	12"	912FS12	-	-
	20"	912FS20	912FA20	-
	30"	912FS30	-	-
1/4" M.NPT x M.POL	5"	-	-	913JS05
	12"	912JS12	-	913JS12
	20"	912JS20	912JA20	913JS20
1/2" M.NPT x M.POL	12"	-	-	913LS12
1/2" M.NPT x 3/8" M.NPT	12"	-	-	913KL12



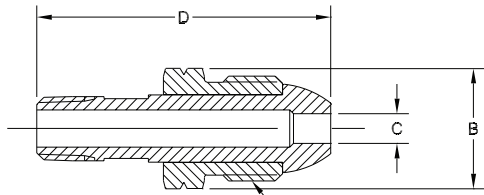
912JS12

Bent Pigtails

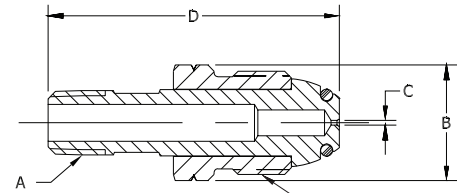
Ordering Information

Connections	Approximate Length	Part #	Type/Degree of Bend
		3/8" Tube	
		7/8" Hex Short Nipple	
1/4" M. NPT x M. POL	5"	913JS05A	90°
M. POL x M. POL		913PS05A	
	12"	913PS12G	270° Right Hand
		913PS12H	270° Left Hand
		913PS12S	360°

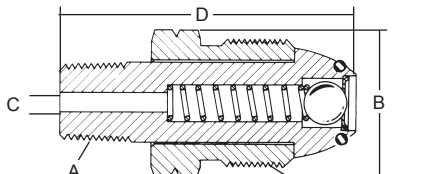
Male POL Swivel Adapters



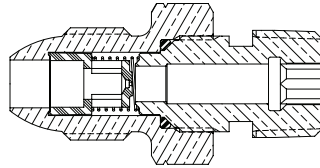
970
Hard Nose POL



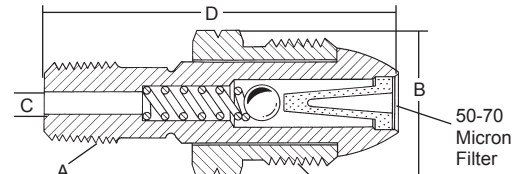
970S
Soft Nose POL w/60 DMS Orifice



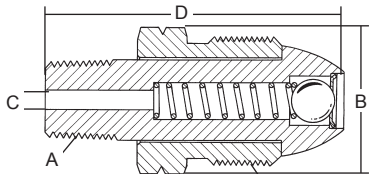
970AXS
Soft Nose POL w/Excess Flow



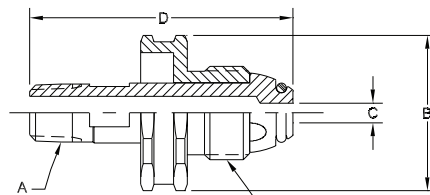
3188 Series



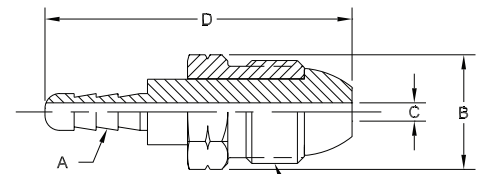
3199W
Heavy Duty Hard Nose POL w/Excess Flow



970AX
Hard Nose POL w/Excess Flow



970AW
970HT
Soft Nose POL w/Handwheel



970JR
Hard Nose POL w/Hose Barb Connection

Ordering Information

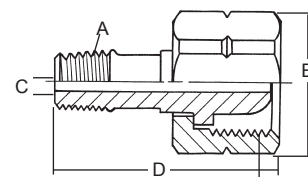
Part Number	Material	A Outlet Thread	B Hex	C Drill	D Overall Length	Vapor at 100 PSIG Inlet (SCFH)	Liquid (GPM)
970	Brass	1/4" M. NPT	7/8"	1/4"	2-15/32"	-	-
970S				.040" orifice		-	-
970AX				1/8"		404	1.10
970AXS				5/32"	2-7/16"	450	0.95
970AWXS				3/16"	2-15/32"	-	-
3199W				.040" orifice			
970AW		1/4" Hose Barb	1-3/8"	5/32"	2-5/8"	350	.95
970HT			7/8"	9/32"	2-1/2"	700	1.9
970JR		1/2" M. NPT	1-1/8"	9/32"	2-1/2"	1180	2.9
3188A						-	-

Note: All nipples incorporate wrench hex section.

CGA 555 Swivel Adapters

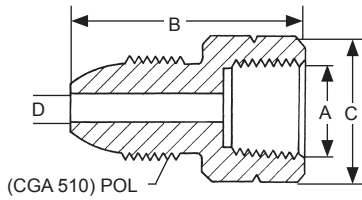
Ordering Information

Part Number	Material	A Outlet Thread	B Hex	C Drill	D Overall Length
12982	Brass	1/4" M. NPT	1-1/8"	3/16"	1-7/8"



CGA 555

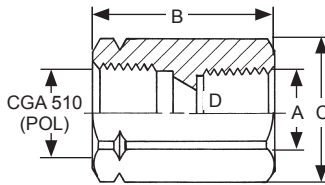
POL Adapters



Male POL x Female NPT

Ordering Information

Part #	Material	A	B	C Hex	D Diameter
2906A	Brass	1/4"	1-11/32"	7/8"	9/32"
2906G		1/2"	2"	1-1/8"	

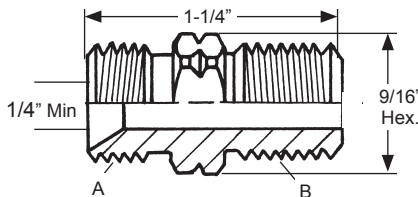


Female POL x Female NPT and Female POL

Ordering Information

Part #	Material	A	B	C Hex	D Diameter
5760A	Brass	1/4" F.NPT	1-5/8"	1-1/8"	13/32"
5760B		3/8" F.NPT			
5760C		1/2" F.NPT			
5760D		3/4" F.NPT			
5760S		POL (CGA 510)	2-1/8"	1-1/8"	13/32"

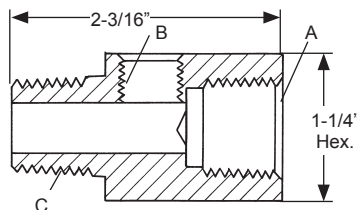
Hose Adapter
For use with fuel gases (LP-Gas, Acetylene).



Ordering Information

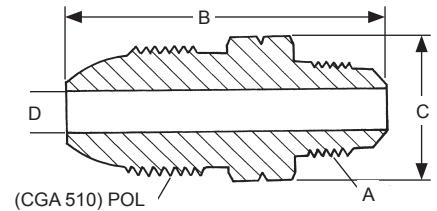
Part #	Material	A	B
1300	Brass	9/16"-18UNF (L.H.)	1/4" M. NPT

Pressure Gauge Adapter



Ordering Information

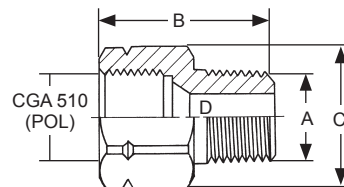
Part #	Material	A	B	C
1494-1	Brass	1/2" F. NPT	1/4" F. NPT	1/2" M. NPT



Male POL x Male NPT and SAE Flare

Ordering Information

Part #	Material	A	B	C Hex	D Diameter
2906D	Brass	3/8" M. NPT	2-5/64"	7/8"	11/32"
2906F		3/8" SAE Flare	2-3/32"		9/32"
2906E		1/2" SAE Flare	2-9/32"		



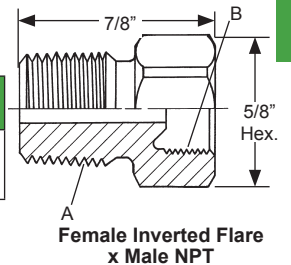
Female POL x Male NPT

Ordering Information

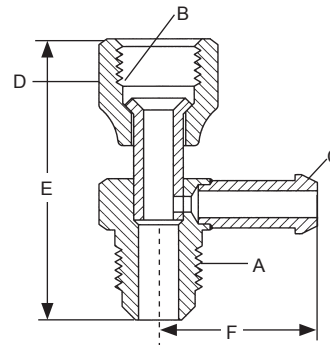
Part #	Material	A	B	C Hex	D Diameter
5761A	Brass	1/4" M.NPT	1-5/8"	1-1/8"	3/16"
5761B		3/8" M.NPT			13/32"
5761C		1/2" M.NPT			7/16"
5761D		3/4" M.NPT			

Ordering Information

Part #	Material	A	B
15774-1	Brass	1/4" M. NPT	1/4" Female Inverted Flare



Female Inverted Flare x Male NPT



Ordering Information

Part #	Material	A	B	C	D	E	F
1328	Brass	3/8" SAE Male Flare	3/8" SAE Female Flare	3/8" Hose Barb	13/16"	2"	1/8"
1331		1/2" SAE Male Flare	1/2" SAE Female Flare		1"	2-1/8"	1-1/4"
1332		5/8" SAE Male Flare	5/8" SAE Female Flare		1-1/8"	2-1/2"	