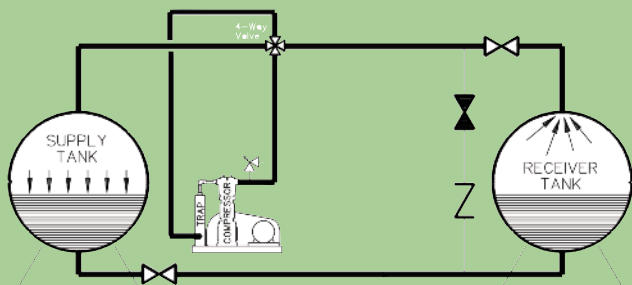
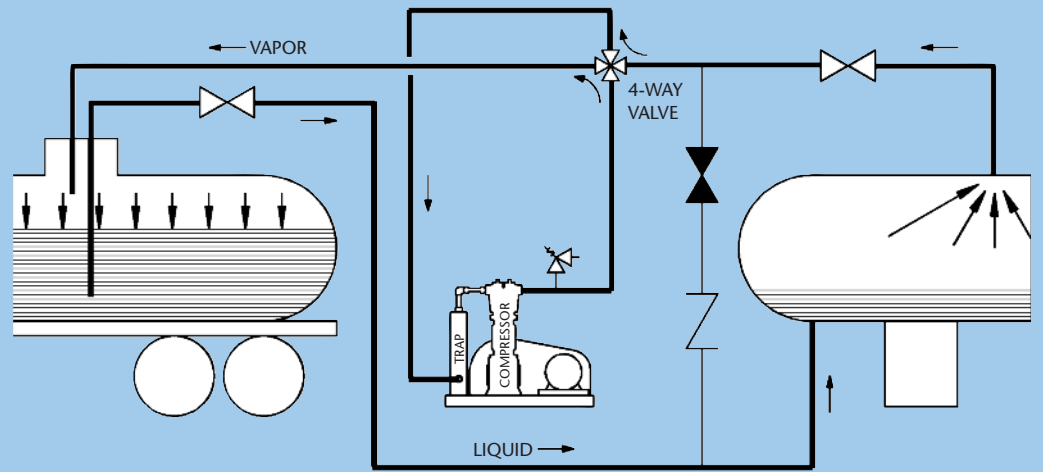


Make sure you are thoroughly trained before you attempt any compressor installations. Improper conditions or procedures can cause accidents resulting in property damage and personal injury.

ALWAYS FOLLOW ORIGINAL EQUIPMENT MANUFACTURER'S GUIDELINES.

Typical Transfer System Configuration



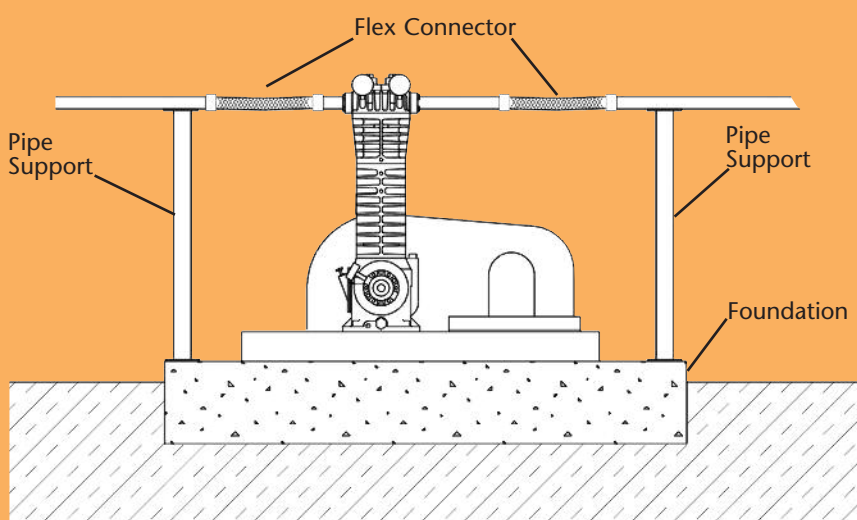
- An ideal compressor system will have 20-30 psig differential pressure shown on the compressor gauges during liquid transfer.
- Compressor oil pressure gauge should be set at 25 psig while in operation.

- Locate the compressor next to the vessel to be emptied. (minimize line losses)
- Use large pipe sizes where possible.
- Keep pipe runs as short as possible.
- Use low restriction fittings and valves
- Eliminate unneeded fittings, particularly in the liquid line.
- Oversize the piping in the liquid line when possible.
- Do not place the compressor at a low point in the piping.



- Always use a liquid trap to protect the compressor from liquid.
- Always vent the liquid trap before starting the compressor.

- Use a **strainer** and keep it clean.
- Must have a **discharge relief valve** installed.



- Provide a solid foundation that is oversized to the compressor baseplate.
- Support the baseplate along its entire length and grout in whenever possible.
- Use flexible connectors and support the rigid piping securely.

Routine Service Schedule

	Daily	Weekly	Monthly	6 Months
Overall Visual Check	X			
Check Crankcase Oil Pressure	X			
Check Suction Pressure	X			
Check Discharge Pressure	X			
Drain Liquid Trap	X			
Clean Compressor Cooling Fins		X		
Check Crankcase Oil Level*		X		
Check V-Belt Tension			X	
Change Oil*				X*
Clean Inlet Strainer Element				X
Inspect Valves				X
Lubricate Motor Bearings per Manufacturers Suggestions				X

*Change oil every 1,000 hours of operation or every 6 months which ever occurs first. If the oil becomes unusually dirty, change oil as often as needed to maintain clean oil.

Above illustrations courtesy of Blackmer.

GAS EQUIPMENT COMPANY, Inc.

SINCE 1937

- | | | | | |
|---|---|--|--------------------------------------|--|
| Atlanta GA
(800) 241-4155 | Dallas TX
(800) 821-1829 | Fayetteville NC
(800) 447-1625 | Houston TX
(800) 334-7816 | Indianapolis IN
(800) 241-1971 |
| Kansas City MO
(800) 821-5062 | Little Rock AR
(800) 643-8222 | Orlando FL
(800) 821-0631 | Richmond VA
(800) 368-4013 | St. Louis MO
(800) 423-4685 |