

For our complete line of heaters, logs, fireboxes and fireplaces, please contact the closest GEC sales office to request Manufacturer's Brochures.

## Direct Vented Heaters



- Up to 84% Efficient Stainless Steel Heat Exchanger
- Integral Humidifier
- Programmable Thermostat and Frost Protection
- Easy Installation
- Cool-to-the-Touch Cabinet
- Child Safety Lock

## Vent-Free Gas Logs



- Choose From Several Different Log Sets
- 18" Models to 36" Models Available
- Ceramic Fiber or Traditional Refractory Concrete Available
- Multi-Sided Model Available
- Remote Controls Featured on Most Series

## Fireplaces (Vent-Free, Vented, Wood Burning)



- Many Models and Sizes Available
- Manual Control or Remote Control Models
- Blower Kits - Trim Kits
- Mantels Available for Most Models

## Fireboxes



- 32", 36", 42", and 50" Front Opening Sizes
- See-Thru and Peninsula Fireboxes
- Blower Kits - Trim Kits
- Mantels Available for 32" and 36" Fireboxes

## Empire Vent-Free SR Radiant Heaters

American Made



- 99.9 Percent Efficient
- LP or Natural Gas
- Safe Operation with Auto Shut-Off Safety Controls
- Manual and Hydraulic Thermostat Controls
- Matchless Piezo Igniter
- All Models Heat without Electricity
- Mounts on Wall or Floor (requires optional floor stand)
- Optional Blower (choose manual or automatic)
- 5-year Limited Warranty on Parts and Labor
- Made in the USA

### Propane

| Item #   | Infrared Temperature Control | Ignition System       | BTU    |
|----------|------------------------------|-----------------------|--------|
| SR6WLP   | Manual 1- Heat Setting       | Standing Pilot, Piezo | 6,000  |
| SR10WLP  | Manual 1- Heat Setting       | Standing Pilot, Piezo | 10,000 |
| SR10TWLP | Hydraulic T-Stat             | Standing Pilot, Piezo | 10,000 |
| SR18WLP  | Manual 3- Heat Setting       | Standing Pilot, Piezo | 18,000 |
| SR18TWLP | Hydraulic T-Stat             | Standing Pilot, Piezo | 18,000 |
| SR30WLP  | Manual 3- Heat Setting       | Standing Pilot, Piezo | 30,000 |
| SR30TWLP | Hydraulic T-Stat             | Standing Pilot, Piezo | 30,000 |

### Natural Gas

| Item #    | Infrared Temperature Control | Ignition System       | BTU    |
|-----------|------------------------------|-----------------------|--------|
| SR6WNAT   | Manual 1- Heat Setting       | Standing Pilot, Piezo | 6,000  |
| SR10WNAT  | Manual 1- Heat Setting       | Standing Pilot, Piezo | 10,000 |
| SR10TWNAT | Hydraulic T-Stat             | Standing Pilot, Piezo | 10,000 |
| SR18WNAT  | Manual 3- Heat Setting       | Standing Pilot, Piezo | 18,000 |
| SR18TWNAT | Hydraulic T-Stat             | Standing Pilot, Piezo | 18,000 |
| SR30WNAT  | Manual 3- Heat Setting       | Standing Pilot, Piezo | 30,000 |
| SR30TWNAT | Hydraulic T-Stat             | Standing Pilot, Piezo | 30,000 |

### Accessories

| Item #  | Description                                   |
|---------|---|
| SRB18W  | Manual Blower for SR18                        |
| SRB18TW | Automatic Blower for SR18T                    |
| SRB30W  | Manual Blower for SR30                        |
| SRB30TW | Automatic Blower for SR30T                    |
| SRS10W  | Stand for Floor Installation SR6, SR10, SR10T |
| SRS-18W | Stand for Floor Installation SR18, SR1T       |
| SRS30W  | Stand for Floor Installation SR30, SR30T      |

## Empire Vent-Free BF Blue-Flame Heaters

American Made



- 99.9 Percent Efficient
- LP or Natural Gas
- Safe Operation with Auto Shut-Off Safety Controls
- Manual and Hydraulic Thermostat Controls
- Matchless Piezo Igniter
- All Models Heat without Electricity
- Mounts on Wall or Floor (requires optional floor stand)
- Optional Blower (choose manual or automatic)
- 5-year Limited Warranty on Parts and Labor
- Made in the USA

### Propane

| Item #  | Infrared Temperature Control | Ignition System       | BTU    |
|---------|------------------------------|-----------------------|--------|
| BF10WLP | Hydraulic T-Stat             | Standing Pilot, Piezo | 10,000 |
| BF20WLP | Mod. Hydraulic T-Stat        | Standing Pilot, Piezo | 20,000 |
| BF30WLP | Mod. Hydraulic T-Stat        | Standing Pilot, Piezo | 30,000 |

### Natural Gas

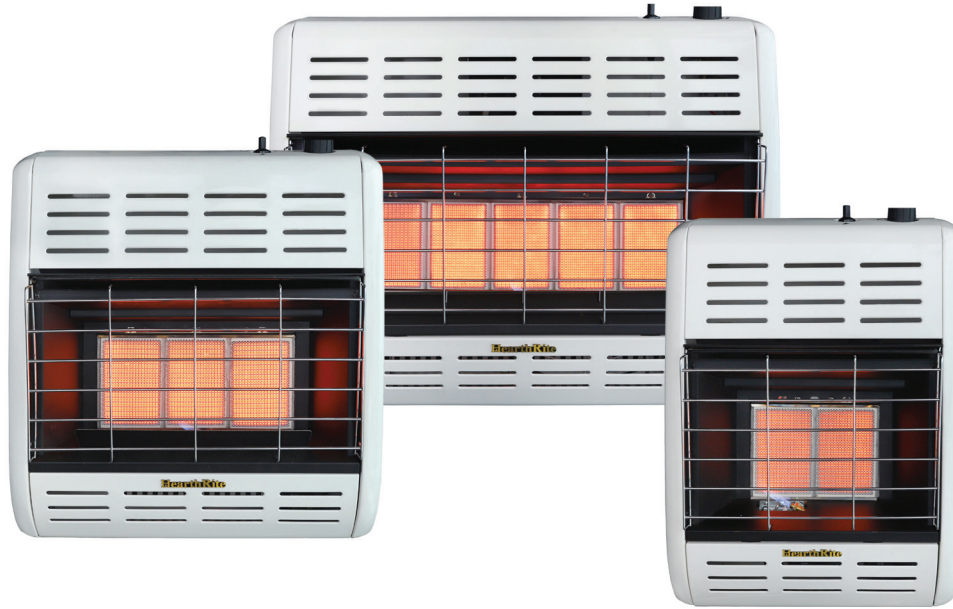
| Item #   | Infrared Temperature Control | Ignition System       | BTU    |
|----------|------------------------------|-----------------------|--------|
| BF10WNAT | Hydraulic T-Stat             | Standing Pilot, Piezo | 10,000 |
| BF20WNAT | Mod. Hydraulic T-Stat        | Standing Pilot, Piezo | 20,000 |
| BF30WNAT | Mod. Hydraulic T-Stat        | Standing Pilot, Piezo | 30,000 |

### Accessories

| Item #  | Description                             |
|---------|---|
| SRB18TW | Automatic Blower for BF10, BF20         |
| SRB30TW | Automatic Blower for BF30               |
| SRS18W  | Stand for Floor Installation BF10, BF20 |
| SRS30W  | Stand for Floor Installation BF30       |

## HearthRite Vent-Free Radiant Heaters

### Imported



- 99.9 Percent Efficient
- LP or Natural Gas
- Pushbutton Piezo Ignition and Standing Pilot
- Heats Even When Electric Power Fails
- Every Heater is Test-fired at the Factory.
- Wall-mount (Optional floor stand available.)
- 3-year Limited Warranty on Parts and Labor
- Imported for Empire from China

### Propane

| Item #  | Infrared Temperature Control | Ignition System       | BTU    |
|---------|------------------------------|-----------------------|--------|
| HRW10ML | Manual 1- Heat Setting       | Standing Pilot, Piezo | 10,000 |
| HRW10TL | T-Stat                       | Standing Pilot, Piezo | 10,000 |
| HRW17ML | Manual 3- Heat Setting       | Standing Pilot, Piezo | 17,000 |
| HRW17TL | T-Stat                       | Standing Pilot, Piezo | 17,000 |
| HRW25ML | Manual 3- Heat Setting       | Standing Pilot, Piezo | 25,000 |
| HRW25TL | T-Stat                       | Standing Pilot, Piezo | 25,000 |

### Natural Gas

| Item #  | Infrared Temperature Control | Ignition System       | BTU    |
|---------|------------------------------|-----------------------|--------|
| HRW10MN | Manual 1- Heat Setting       | Standing Pilot, Piezo | 10,000 |
| HRW10TN | T-Stat                       | Standing Pilot, Piezo | 10,000 |
| HRW18MN | Manual 3- Heat Setting       | Standing Pilot, Piezo | 18,000 |
| HRW18TN | T-Stat                       | Standing Pilot, Piezo | 18,000 |
| HRW30MN | Manual 3- Heat Setting       | Standing Pilot, Piezo | 30,000 |
| HRW30TN | T-Stat                       | Standing Pilot, Piezo | 30,000 |

### Accessories

| Item # | Description                                     |
|--------|---|
| HABLR  | Blower fits 15,000 to 30,000 BTU                |
| HABF   | Stand fits all HearthRite Heaters 2020 or Newer |



## HearthRite Vent-Free Blue Flame Heaters

Imported



- 99.9 Percent Efficient
- LP or Natural Gas
- Pushbutton Piezo Ignition and Standing Pilot
- Heats Even When Electric Power Fails
- Every Heater is Test-fired at the Factory.
- Wall-mount (Optional floor stand available.)
- 3-year Limited Warranty on Parts and Labor
- Imported for Empire from China

### Propane

| Item #  | Infrared Temperature Control | Ignition System       | BTU    |
|---------|------------------------------|-----------------------|--------|
| HBW10ML | Manual                       | Standing Pilot, Piezo | 10,000 |
| HBW10TL | T-Stat                       | Standing Pilot, Piezo | 10,000 |
| HBW20ML | Manual                       | Standing Pilot, Piezo | 20,000 |
| HBW20TL | T-Stat                       | Standing Pilot, Piezo | 20,000 |
| HBW30ML | Manual                       | Standing Pilot, Piezo | 30,000 |
| HBW30TL | T-Stat                       | Standing Pilot, Piezo | 30,000 |

### Natural Gas

| Item #  | Infrared Temperature Control | Ignition System       | BTU    |
|---------|------------------------------|-----------------------|--------|
| HBW10MN | Manual                       | Standing Pilot, Piezo | 10,000 |
| HBW10TN | T-Stat                       | Standing Pilot, Piezo | 10,000 |
| HBW20MN | Manual                       | Standing Pilot, Piezo | 20,000 |
| HBW20TN | T-Stat                       | Standing Pilot, Piezo | 20,000 |
| HBW30MN | Manual                       | Standing Pilot, Piezo | 30,000 |
| HBW30TN | T-Stat                       | Standing Pilot, Piezo | 30,000 |

### Accessories

| Item # | Description                                     |
|--------|---|
| HABLR  | Blower fits 15,000 to 30,000 BTU                |
| HABF   | Stand fits all HearthRite Heaters 2020 or Newer |

## Mr. Heater Gas Appliances



North America's Most Popular Portable Propane Heater! This patented radiant Liquid Propane heater connects directly to 1 lb. cylinders. The expertly engineered design gives this heater maximum output while retaining a minimalistic footprint.

| Item#         | Description               | BTU/hr                 |
|---------------|---------------------------|------------------------|
| <b>MH9B*</b>  | Portable Buddy Heater     | 4,000 - 9,000          |
| <b>MH18B*</b> | Big Buddy Portable Heater | 4,000, 9,000 or 18,000 |

\* Check all local, state and federal codes before using indoors.

## Mr. Heater Gas Appliances



| Item #       | Description    | BTU/hr         |
|--------------|----------------|----------------|
| <b>MH15T</b> | Single Element | 8,000 - 15,000 |
| <b>MH30T</b> | Double Element | 8,000 - 15,000 |
| <b>MH45T</b> | Triple Element | 8,000 - 45,000 |

## L.B. White Classic™ Forced Air Pilot Ignition Heaters



- Pilot light ignition - simple and dependable operation.
- "Tri-shield" Paint System - excellent protection with 3 layers of protective finish.
- Fully protected gas valve - molded caps on solenoid and pilot protect from dust, dirt & moisture. Eyebolt & chain mounting system - all hardware included.
- Internal gas pressure tap.
- Ten year warranty on case and combustion chamber for rust through.
- Includes unit mounted thermostat.
- Does not include hose and regulator assembly.
- Other L.B. White models available for Special Order

| Item# | Capacity BTU/hr | Fuel Consumption | Air Output (Heated) CFM | Electrical | Motor Amp. Draw | 10 ft. Gas Hose | Gas Regulator Operating Pressure |
|-------|-----------------|------------------|-------------------------|------------|-----------------|-----------------|----------------------------------|
| 346-4 | 60,000          | 60 cu. ft./hr    | 250                     | 115/60/1   | 3 amps          | 1/4" ID         | 11" WC                           |
| 377-4 | 115,000         | 115 cu. ft./hr   | 480                     | 115/60/1   | 3 amps          | 1/2"            | 11" WC                           |

## L.B. White Guardian™ Forced Air Hot Surface Ignition Heaters



- For indoor or outdoor applications.
- Adjustable heat output.
  - AGA/CGA certified.
  - All models shipped with a sediment trap and 10 ft. power cord. (Power cord not included with AS325LP)
  - All models incorporate an integral gas regulator in the gas valve with a maximum inlet pressure of 1/2 PSIG.
  - Gas valve includes manual gas flow shut-off.
  - CSA U.S./Canada Certification

| Item#   | BTU/hr Rating                 |               | Heated Air Output (CFM) | Inlet Gas Supply Pressure Propane min/max (in WC) | Natural Gas min./max. (in WC) | Cabinet Material                           |
|---------|-------------------------------|---------------|-------------------------|---|-------------------------------|--|
|         | Minimum Input (variable from) | Maximum Input |                         |   |                               |  |
| AW100LP | 50,000                        | 100,000       | 400                     | 11.5/13.5   | 7.0/13.5                      | Steel with Tri-Shield Coating <sup>8</sup> |
| AW250LP | 160,000                       | 250,000       | 1,050                   | 11.5/13.5   | 7.0/13.5                      | Galvanized Steel**                         |
| AW325LP | 200,000                       | 325,000       | 1,700                   | 11.5/13.5   | 7.0/13.5                      | Galvanized Steel**                         |

NOTE: Natural Gas models available for special order

\*Tri-Shield coating consists for 3 unique protective layers including a non-corrosive hot-dipped galvanized steel, and oven-cured epoxy primer and a baked, thermosetting polyester.

\*\*Exclusive Tri-Shield coating available.

## L.B. White Workman™ Convection Heater



| Item#  | BTU/hr Rating | Fuel Consumption lbs/hr | Ignition Type | Inlet Gas Supply Pressure Propane min/max | Burner Type | Case Material    |
|--------|---------------|-------------------------|---------------|---|-------------|------------------|
| CH225V | 225,000       | 10.4                    | Piezo Pilot   | 10.2 PSIG                                 | Stainless   | Aluminized Steel |

## Garage Shop Heater



- Simple operation, efficient & effective convection workshop heater
- Requires only 1" clearance from ceiling
- Spark ignition - self diagnostic
- CSA Certified
- Approved for residential & commercial use

| Item# | BUT/HR |
|-------|--------|
| HSU50 | 50,000 |
| HSU80 | 80,000 |

## High Intensity Workshop Heater



- Requires no electricity
- Great for use in workshops or garages

| Item# | Gas         | BTU/hr |
|-------|-------------|--------|
| HS22L | Propane     | 22,000 |
| HS25N | Natural Gas | 25,000 |

## Enerco Portable Radiant



- Heats up to 3,125 sq. ft.
- Rugged, durable construction
- No electricity required
- Welded frame, heat shield, safety shut-off, regulator
- O.O.L. connection with 20' hose included (F170800)
- Recommended for operation on tanks 100 lbs. and larger
- Runs up to 17 hrs. on a 100 lb tank
- CSA certified

| Item#   | Output (BTU/HR) | Propane Consumption (LBS/HR) | Heating Area (SQ. FT.) | Ignition Type | Pressure Regulator Setting | Flame Safety                    | Hose/Regulator     |
|---------|-----------------|------------------------------|------------------------|---------------|----------------------------|---------------------------------|--------------------|
| HS125LP | 125,000         | 5.8 max                      | 3125                   | Piezo Pilot   | 13.5 w.c.                  | Thermocouple Operated Gas Valve | 20' with Regulator |
| HS125NG | 125,000         | —                            | 3125                   | Piezo Pilot   | 13.5 w.c.                  | Thermocouple Operated Gas Valve | —                  |

## Enerco Forced Air



- For use with Propane Gas
- Rugged and durable steel construction
- Economical, efficient and clean burning
- Heavy duty high output fan
- Hose and Regulator included

| Item#    | BTU/h Rating | Propane Consumption (LBS/HR) | Heating Area (SQ. FT.) | Ignition Type | Inlet Gas Pressure | Hose/Regulator     |
|----------|--------------|------------------------------|------------------------|---------------|--------------------|--------------------|
| HS85FAV  | 85,000       | 3.90                         | 2,125                  | Continuous    | 28" w.c.           | 20' with Regulator |
| HS125FAV | 125,000      | 5.80                         | 3,125                  | Continuous    | 28" w.c.           | 20' with Regulator |
| HS170FAV | 170,000      | 7.80                         | 4,250                  | Continuous    | 28" w.c.           | 20' with Regulator |



## HeatStar High Intensity Infrared Heaters



- Efficient, Cost Effective Radiant Heaters 30,000 - 140,000 BTU/HR
- Instant Heat — Quiet, Clean, Odor Free Operation
- Maintenance Free
- No Direct Venting Required
- Warranty: Pro-rated 10-year (burner assembly), limited 1-year (gas control)

| Item#   | BTU/HR | Converts to BTU/HR | Mounting Clearance to Combustibles |       |      |       | Typical Mounting Height |
|---------|--------|--------------------|------------------------------------|-------|------|-------|-------------------------|
|         |        |                    | Top                                | Sides | Back | Below |                         |
| HS4040  | 40000  | 30000              | 34"                                | 30"   | 30"  | 68"   | 10-12'                  |
| HS8060  | 60000  | 50000              | 40"                                | 30"   | 30"  | 84"   | 13-15'                  |
| HS9100S | 100000 | 80000              | 48"                                | 46"   | 46"  | 118"  | 15-28'                  |
| HS9120  | 120000 | 100000             | 46"                                | 46"   | 46"  | 114"  | 18' +                   |

### Control Systems

| Item# | Description   |
|-------|---|
| SP    | Automatic spark ignition on pilot with safety burner shut-off, 24VAC with intermittent pilot, Thermostat is shipped with unit. (Pilot is off when heater is off.) |
| PP    | Power pile (self-generating) millivolt control. No outside electrical source is required to operate unit. Manually lit pilot, safety shut-off on pilot and burner |

### Decorative Kits

Easily convert restaurant / patio installations

| Item#   | Description                                | Kit Contains                                |
|---------|--|---|
| F104440 | 4000 Series Decorative Grid Kit            | Grid, screws, retention clip                |
| F104441 | 4000 Series Decorative Grid Kit, retro-fit | New reflector, grid, screws, retention clip |
| F104445 | 8000 Series Decorative Grid Kit            | Grid, screws, retention clip                |
| F104446 | 8000 Series Decorative Grid Kit, retro-fit | New reflector, grid, screws, retention clip |

## HeatStar Radiant Tube Heater



- 10-Year Warranty
- Available in 10 to 60 ft. System Lengths
- Sealed Burner Control Box
- Full Cover Polished Aluminum Reflector
- Stainless Steel Couplers

### Single Stage Tube Heater Burner Boxes



| Item#      | BTU/HR |
|------------|--------|
| ERXL40-LP  | 40000  |
| ERXL60-LP  | 60000  |
| ERXL80-LP  | 80000  |
| ERXL100-LP | 100000 |
| ERXL125-LP | 125000 |
| ERXL150-LP | 150000 |
| ERXL175-LP | 175000 |

### 2 Stage Tube Heater Burner Boxes



| Item#        | BTU/HR                     |
|--------------|----------------------------|
| ER2STG100-LP | 60,000 Low - 100,000 High  |
| ER2STG125-LP | 80,000 Low - 125,000 High  |
| ER2STG175-LP | 125,000 Low - 175,000 High |

### Tube Sets - ERXL & ER2STG Burner



Tube sets include: Tubes, Reflectors, Hangers, Couplers, Vent Adapter, Plus Turbulator Where Necessary.

| Item#     | Use with Burner Box                 | Length | Top Horizontal | Top 45° Angle Straight Below | Sides | Typical Mounting Height | Mounting Clearance to Combustibles |
|-----------|-------------------------------------|--------|----------------|------------------------------|-------|-------------------------|------------------------------------|
| F106408XL | ERXL40 (10' Tubulator)              | 10'    | 6"             | 12"                          | 55"   | 30"                     | 90                                 |
| F106404XL | ERXL60/80 (10' Tubulator)           | 20'    | 6"             | 18"                          | 55"   | 36"                     | 110                                |
| F106405XL | ERXL80 (10' Tubulator)              | 30'    | 6"             | 18"                          | 55"   | 36"                     | 110                                |
| F106401XL | ERXL100 (5' Tubulator) or ER2STG100 | 30'    | 6"             | 18"                          | 74"   | 36"                     | 130                                |
| F106406XL | ERXL100/125 or ER2STG125            | 40'    | 6"             | 18"                          | 87"   | 36"                     | 150                                |
| F106407XL | ERXL125/150/175 or ER2STG125        | 50'    | 6"             | 18"                          | 87"   | 36"                     | 170                                |
| F106403XL | ERXL150/175 or ER2STG175            | 60'    | 6"             | 18"                          | 87"   | 36"                     | 190                                |

### Accessories

| Item#   | Description        |
|---------|--------------------|
| F106414 | 180° U-Tube Kit    |
| F106415 | 90° Elbow Kit      |
| 438     | Side Reflector Kit |

| Item#   | Description            |
|---------|------------------------|
| 10371   | 24V ERXL Thermostat    |
| 14585P  | Hanger Kit (1 per 10') |
| 17370   | Chain Kit (1 per 10')  |
| F102601 | ER2STG Thermostat      |

## Red Dragon Vapor Torch Kits

### Light Duty



| Item#       | Description   | Kit Contains   | Burner Capacity BTU/HR |
|-------------|---|--|------------------------|
| HT11/2-10CR | Ideal for the serious Do-It-Yourself worker needing a hand torch.   | 10 ft. of hose, POL fitting, Needle valve, Pipe thread compound, Spark ignitor | 50,000                 |
| VT11/2-12C  | Ideal for the smaller jobs where a larger torch proves too awkward. | POL fitting, Needle valve, Pipe thread compound                                | 50,000                 |

### Heavy Duty



| Item#      | Description  | Kit Contains   | Burner Capacity BTU/HR |
|------------|--|--|------------------------|
| VT21/2-30C | Excellent utility torch kit for around the farm and home.  | 28" handle, 10 ft. of hose, POL fitting, Needle valve, Pipe thread compound, Spark ignitor | 400,000                |
| VT3-30C    | Ideal for burning weeds, stumps, clearing irrigation ditches, heating and thawing, plus numerous other agricultural and industrial uses. | 28" handle, 10 ft. of rubber hose, POL fitting, Needle valve, Pipe thread compound         | 500,000                |

### Economy



| Item#        | Description   | Kit Contains  | Burner Capacity BTU/HR |
|--------------|---|---|------------------------|
| VT2 1/2-24CE | Perfect for where continuous operation is required<br>Excellent economy torch | 23" handle, 10 ft. of Thermoplastic hose, POL fitting, Needle valve, Pipe thread compound | 500,000                |

## Red Dragon Liquid Torch Kits

### Liquid Torch Kits



| Item#      | Description  | Kit Contains  | Burner Capacity BTU/HR |
|------------|--|---|------------------------|
| LT21/2-30C | Excellent kit for road repair, surface drying, preheating castings for welding, weed burning and many other jobs | 26" handle, 10 ft. of LP Gas hose, POL fitting, Needle valve, Pipe thread compound, spark ignitor | 250,000                |
| LT3-60C    | Excellent kit for paying repairs, extended weed burning or melting snow or ice.                                  | 49" handle, 25 ft. of LP Gas hose, POL fitting, Needle valve, Pipe thread compound, spark ignitor | 750,000                |

## Rinnai Tankless Water Heaters

- Never think about your hot water needs again. Available in multiple sizes, our innovative technology provides an endless supply of hot water whenever and wherever it's needed—even for simultaneous uses at multiple fixtures.
- Designed for efficiency. With an energy factor of up to .82, Rinnai's Luxury and Value Series units use up to 40 percent less energy than a traditional tank.
- Maximum output, minimum space. About the size of a small suitcase, the Rinnai can be tucked in a small crawl space, attic or basement. These wall-mounted units can be installed on the interior wall of the home to free up valuable space.
- Earth-friendly efficiency. Compact heat exchanger design, longer product lifespan compared to a traditional tank and recyclable parts means less waste in landfills.

## Tankless Water Heaters - Commercial/Residential

### HE+ Series



| Part #   | Description | BTU            | Isolation Valves Included | ULNOx Compliant | Gas Type    |
|----------|-------------|----------------|---------------------------|-----------------|-------------|
| RL94i-P  | Interior    | 10,300/199,000 | Yes                       | N/A             | Propane     |
| RL94i-N  | Interior    | 10,300/199,000 | Yes                       | N/A             | Natural Gas |
| RLX94i-N | Interior    | 10,300/192,000 | Yes                       | Yes             | Natural Gas |
| RL94e-P  | Exterior    | 10,300/199,000 | Yes                       | Yes             | Propane     |
| RL94e-N  | Exterior    | 10,300/199,000 | Yes                       | Yes             | Natural Gas |
| RL75i-P  | Interior    | 10,300/180,000 | Yes                       | Yes             | Propane     |
| RL75i-N  | Interior    | 10,300/180,000 | Yes                       | Yes             | Natural Gas |
| RL75e-P  | Exterior    | 10,300/180,000 | Yes                       | Yes             | Propane     |
| RL75e-N  | Exterior    | 10,300/180,000 | Yes                       | Yes             | Natural Gas |

## Tankless Water Heaters - Residential

### HE Series



| Part #  | Description | BTU  | ULNOx Compliant | Gas Type    |
|---------|-------------|--|-----------------|-------------|
| V94i-P  | Interior    | 10,300/199,000                             | N/A             | Propane     |
| V94i-N  | Interior    | 10,300/199,000                             | N/A             | Natural Gas |
| V94Xi-N | Interior    | 10,300/192,000                             | Yes             | Natural Gas |
| V94e-P  | Exterior    | 10,300/199,000                             | Yes             | Propane     |
| V94e-N  | Exterior    | 10,300/199,000                             | Yes             | Natural Gas |
| V75i-P  | Interior    | 10,300/180,000                             | Yes             | Propane     |
| V75i-N  | Interior    | 10,300/180,000                             | Yes             | Natural Gas |
| V75e-P  | Exterior    | 10,300/180,000                             | Yes             | Propane     |
| V75e-N  | Exterior    | 10,300/180,000                             | Yes             | Natural Gas |
| V65i-P  | Interior    | 10,300/150,000                             | Yes             | Propane     |
| V65i-N  | Interior    | 10,300/150,000                             | Yes             | Natural Gas |
| V65e-P  | Exterior    | 10,300/150,000                             | Yes             | Propane     |
| V65e-N  | Exterior    | 10,300/150,000                             | Yes             | Natural Gas |
| V53de-P | Exterior    | 19,000/120,000 (NG)<br>20,200/120,000 (LP) | N/A             | Propane     |
| V53de-N | Exterior    | 19,000/120,000 (NG)<br>20,200/120,000 (LP) | N/A             | Natural Gas |

•All Luxury Interior, V94i, V94Xi, V75i and V65i units include an integrated MC-91-2US controller, 98°-140° (Factory Setting 120°)  
 •All Luxury Exterior, V94e, V75e and V65e units include an MC-91-2US controller in the box, 98°-140° (Factory Setting 120°)  
 •All Luxury units used for applications requiring temperatures above 140° will require a MCC-91-2W remote controller (sold separately).  
 Certifications: AHRI, UPC, CSA, UMC, AB1953, NSF (Model V53e not NSF-certified)



## Rinnai Tankless Water Heater Accessories

| Part #                                 | Description   |
|--|---|
| <b>RWM101</b>                          | Rinnai Wi-Fi Module (Available April 2016)  |
| <b>RWMPB01</b>                         | Rinnai Wireless Push Button (Available April 2016)  |
| <b>RWMMS01</b>                         | Rinnai Wireless Motion Sensor (Available April 2016)  |
| <b>RWMKT01</b>                         | Standard Wireless Demand Recirc Kit (Available April 2016)                                      |
| <b>RWMKT01P</b>                        | Standard Wireless Demand Recirc Kit w/ External Pump (Available April 2016)                     |
| <b>RWMKT03</b>                         | Title 24 Compliant Wireless Demand Recirc Kit (Available April 2016)                            |
| <b>RWMKT03P</b>                        | Title 24 Compliant Wireless Demand Recirc Kit w/ External Pump (Available April 2016)           |
| <b>GTK15</b>                           | Grundfos® Pump with Timer Kit w/Flange Kit for Circ Logic (Excluding Value Series)              |
| <b>MC-195T-US</b>                      | Timer Controller for Recirculation  |
| <b>103000038</b>                       | ScaleCutter® System 3/4" Feed   |
| <b>103000039</b>                       | ScaleCutter® System Refill  |
| <b>MC-91-2S</b><br>Replaces MC-91-1S   | Standard Remote Controller – Residential or Commercial, 98°-140°F (silver)                      |
| <b>MC-91-2W</b><br>Replaces MC-91-1W   | Standard Remote Controller – Residential or Commercial, 98°-140°F (white)                       |
| <b>MCC-91-2W</b><br>Replaces MCC-91-1W | Commercial Controller (for temperatures > 140°F)  |
| <b>MC-91-1US-S-RK</b>                  | Integrated Controller Relocation Kit (Not compatible with VC Luxury Models)                     |
| <b>MC-100V-1S</b>                      | Deluxe Remote Controller – Clock and Call features, 98°-140°F (silver)                          |
| <b>MC-100V-1W</b>                      | Deluxe Remote Controller – Clock and Call features, 98°-140°F (white)                           |
| <b>BC-100V-1S</b>                      | Bath Fill Remote Controller 98°-140°F (silver)  |
| <b>BC-100V-1W</b>                      | Bath Fill Remote Controller 98°-140°F (white)   |
| <b>REU-MSB-M</b>                       | Multi-Unit Controller Kit (One unit needed for each set of 5 units, up to 25 units total)       |
| <b>REU-MSB-C1</b>                      | Cable to connect Ultra, Luxury Series (Excluding Values Series)                                 |
| <b>REU-MSB-C2</b>                      | Cable to connecting MSB-M Control Units (Cable length 25.2 ft)                                  |
| <b>103000037</b>                       | Domestic Priority Switch for Hydronic Air Handler/Maintenance Indication Switch                 |
| <b>REU-EZC-1-US</b>                    | EZConnect® Cable for connecting 2 units (Luxury Series and Value Series V94i/e, V75i/e, V65i/e) |
| <b>REU-PVA-4</b>                       | Pressure Activated Valve for manifolding RV53e/V53e (1 PVA needed between each pair of units)   |
| <b>RGB-20U</b>                         | Recess Box for RV53e/V53e   |
| <b>RGB-25U-MSAL-C</b>                  | Universal Moisture Seal Recess Box for VA, VB, VC (RL94e, RL75e, V94e, V75e, V65e)              |
| <b>RGB-25U-C</b>                       | Universal Recess Box for VA, VB, VC (RL94e, RL75e, V94e, V75e, V65e)                            |
| <b>109000283</b>                       | RGB-25U/MSAL Replacement Door Kit (for fitting VC units into old RGB-25U/MSAL boxes)            |

| Part #                                 | Description  |
|--|--|
| <b>104000050</b>                       | RGB-25W Replacement Door Kit (for fitting R63LSe2, R94/R75LSe units into RGB-25W/MS recess boxes)  |
| <b>104000055</b>                       | RGB-25MSW Replacement Door Kit (for fitting R63LSe2, R94/R75LSe units into RGB-25MSW recess boxes) |
| <b>PC-20-W</b>                         | Pipe Cover Enclosure for V53e/RV53e  |
| <b>PCD03-SM2</b>                       | Pipe Cover Enclosure for the Luxury Series   |
| <b>PCD03-SM2-BP</b>                    | Bottom Plate for PCD03-SM2 pipe cover and PDC03-EWV  |
| <b>PCD03-EWV</b>                       | Pipe Cover Enclosure for the V94/V65/V75 Units   |
| <b>MIVK-T-LW</b><br>Replaces WRIK-LF-F | Plumbing Isolation Valve Kit, Compact design, Ease in Tankless Flushing, Threaded, Lead-Free       |
| <b>104000059</b>                       | Freeze Protection Solenoid Valve Kit for Outdoor Units in Cold Regions                             |

# Tankless Water Heater Venting Materials

## Rinnai Tankless Water Heater Concentric Venting Material for Non-Condensing

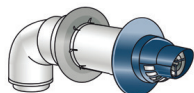
Heaters, Torches & Cookers



| Part # | Description                                   |
|--------|---|
| 224046 | Raised Horizontal Termination Kit ("Snorkel") |



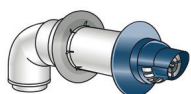
| Part # | Description        |
|--------|--------------------|
| 710342 | Wall Plate (white) |
| 710602 | Wall Plate (black) |



| Part # | Description  |
|--------|--|
| 223191 | 8.7" Universal Non-Condensing Horizontal Termination Kit |

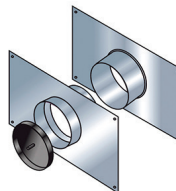


| Part # | Description     |
|--------|-----------------|
| 222053 | Condensate Trap |

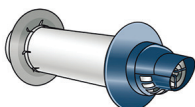


| Part # | Description   |
|--------|---|
| 223181 | 11.5" Universal Non-Condensing Horizontal Termination Kit |

SUPERCEDES STDKITVA-S/STDKITVA-A



| Part # | Description             |
|--------|-------------------------|
| 224045 | Thimble (1 kit per box) |



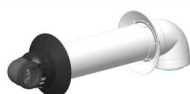
| Part # | Description   |
|--------|---|
| 223183 | 11.5" Universal Non-Condensing Horizontal Termination |

SUPERCEDES 223157/223161



| Part # | Description          |
|--------|----------------------|
| 224049 | Vent Support Bracket |

SUPERCEDES 224097

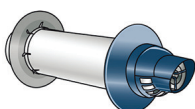


| Part # | Description   |
|--------|---|
| 223182 | 21" Universal Non-Condensing Horizontal Termination Kit |

SUPERCEDES STDKITVA-S/STDKITVA-A21



| Part # | Description               |
|--------|---------------------------|
| 224051 | 10" Vent Pipe Extension   |
| 224052 | 19.5" Vent Pipe Extension |
| 224053 | 39" Vent Pipe Extension   |



| Part # | Description   |
|--------|---|
| 223184 | 21" Universal Non-Condensing Horizontal Termination |

SUPERCEDES 223152/223171



| Part # | Description  |
|--------|--|
| 185342 | Roof Termination Ext Kit for Luxury and Value Series |



| Part # | Description  |
|--------|--|
| 223187 | 21" Non-Condensing Horizontal Termination Diverter Kit Termination for Minimal Clearance |



| Part # | Description             |
|--------|-------------------------|
| 224054 | Telescoping Vent Length |



| Part # | Description     |
|--------|-----------------|
| 224063 | 90 Degree Elbow |

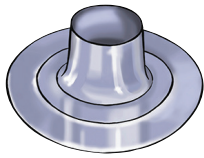


| Part #   | Description   |
|----------|---|
| 184118-S | Roof Discharge Termination 18" (above roof)               |
| 184119   | Roof Discharge Termination 38" (above roof); cold climate |

# Tankless Water Heater Venting Materials

## Rinnai Tankless Water Heater Concentric Venting Material for Non-Condensing

Heaters, Torches  
& Cookers



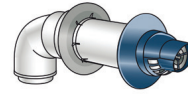
| Part # | Description                 |
|--------|-----------------------------|
| 146141 | Roof Flashing Assembly-Flat |



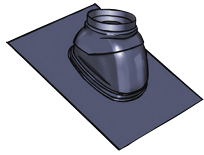
| Part # | Description                |
|--------|----------------------------|
| 224050 | 45 Degree Elbow (Qty of 2) |



| Part #   | Description               |
|----------|---------------------------|
| 10200012 | Horizontal Flashing Panel |



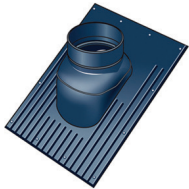
| Part # | Description   |
|--------|---|
| 223188 | 12" Universal Termination Metal Kit (Luxury/Value Series) |



| Part # | Description   |
|--------|---|
| 189950 | Shingle Roof Flashing - 1/12 to 6/12 pitch (Plastic)  |
| 189951 | Shingle Roof Flashing - 6/12 to 12/12 pitch (Plastic) |
| 189952 | Shingle Roof Flashing - 8/12 to 16/12 pitch (Plastic) |



| Part #            | Description                                 |
|-------------------|---|
| 184127            | Roof Discharge Termination 18" (above roof) |
| SUPERCEDES 223167 |   |



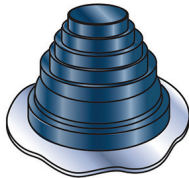
| Part #   | Description   |
|----------|---|
| 50171949 | Tile/Shingle Roof Flashing - 1/12 to 6/12 pitch (Coated Metal)  |
| 50171954 | Tile/Shingle Roof Flashing - 8/12 to 16/12 pitch (Coated Metal) |
| 50171961 | Tile/Shingle Roof Flashing - 6/12 to 12/12 pitch (Coated Metal) |



| Part # | Description             |
|--------|-------------------------|
| 224255 | 90 Degree Elbow (Metal) |



| Part # | Description                  |
|--------|------------------------------|
| 224245 | Condensate Collector (Metal) |



| Part # | Description             |
|--------|-------------------------|
| 242141 | Flashing for Metal Roof |



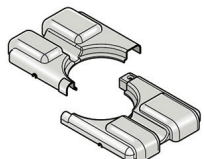
| Part # | Description                        |
|--------|------------------------------------|
| 224250 | 45 Degree Elbow (2 pieces) (Metal) |



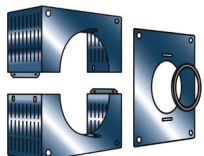
| Part # | Description |
|--------|-------------|
| 169044 | Pipe Clamp  |



| Part # | Description                       |
|--------|-----------------------------------|
| 224260 | 10" Vent Pipe Extension (Metal)   |
| 224265 | 19.5" Vent Pipe Extension (Metal) |
| 224270 | 39" Vent Pipe Extension (Metal)   |



| Part # | Description                             |
|--------|---|
| 224040 | NSF Cover (for commercial applications) |



| Part # | Description         |
|--------|---------------------|
| 224042 | Universal Bug Guard |